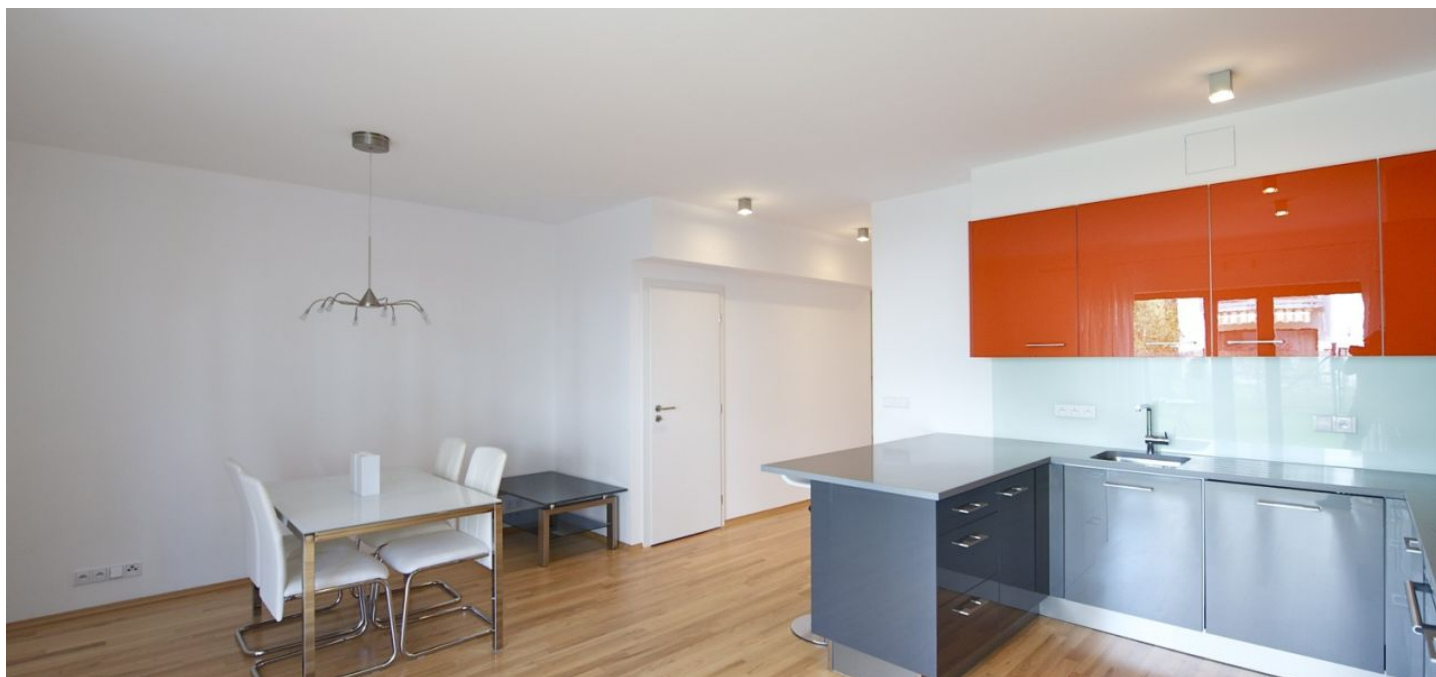




## House Three-bedroom (4+1)

Rented

170 m<sup>2</sup>, Praha-západ, Statenice, Statenice



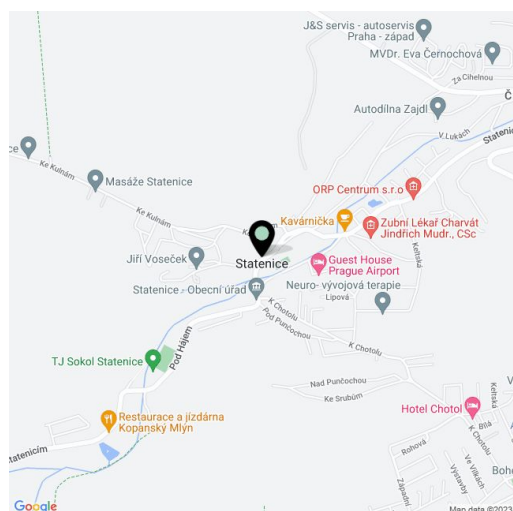


## House Three-bedroom (4+1)

**Rented**170 m<sup>2</sup>, Praha-západ, Statenice, Statenice

<b>Parking</b>	Garage.
<b>Cellar</b>	-
<b>PENB</b>	G
<b>Reference number</b>	2505
<b>Available from</b>	Immediately

A first-class project situated in a beautifully landscaped protected area in the picturesque "Únětické" valley, 5 km from Prague, and a 10 minute drive to the airport. This residential complex located in the center of the village boasts functionalist-style villas, modern apartments and terraced houses, fully equipped gym for residents' sole use, English speaking kindergarten, florist, dry cleaner, patisserie, café, health and beauty spa and a waterside restaurant. This three-story town house has a spacious eat-in kitchen, living room, 3 bedrooms, one of which is en-suite, 2 bathrooms, and guest toilet. There are 3 terraces, 1 balcony, utility room, storage, and a little garden. Common charges CZK 3.000/month (security service, fitness club pass), utilities are billed separately. Marvelous environment for a peaceful lifestyle! Available from September 2012.

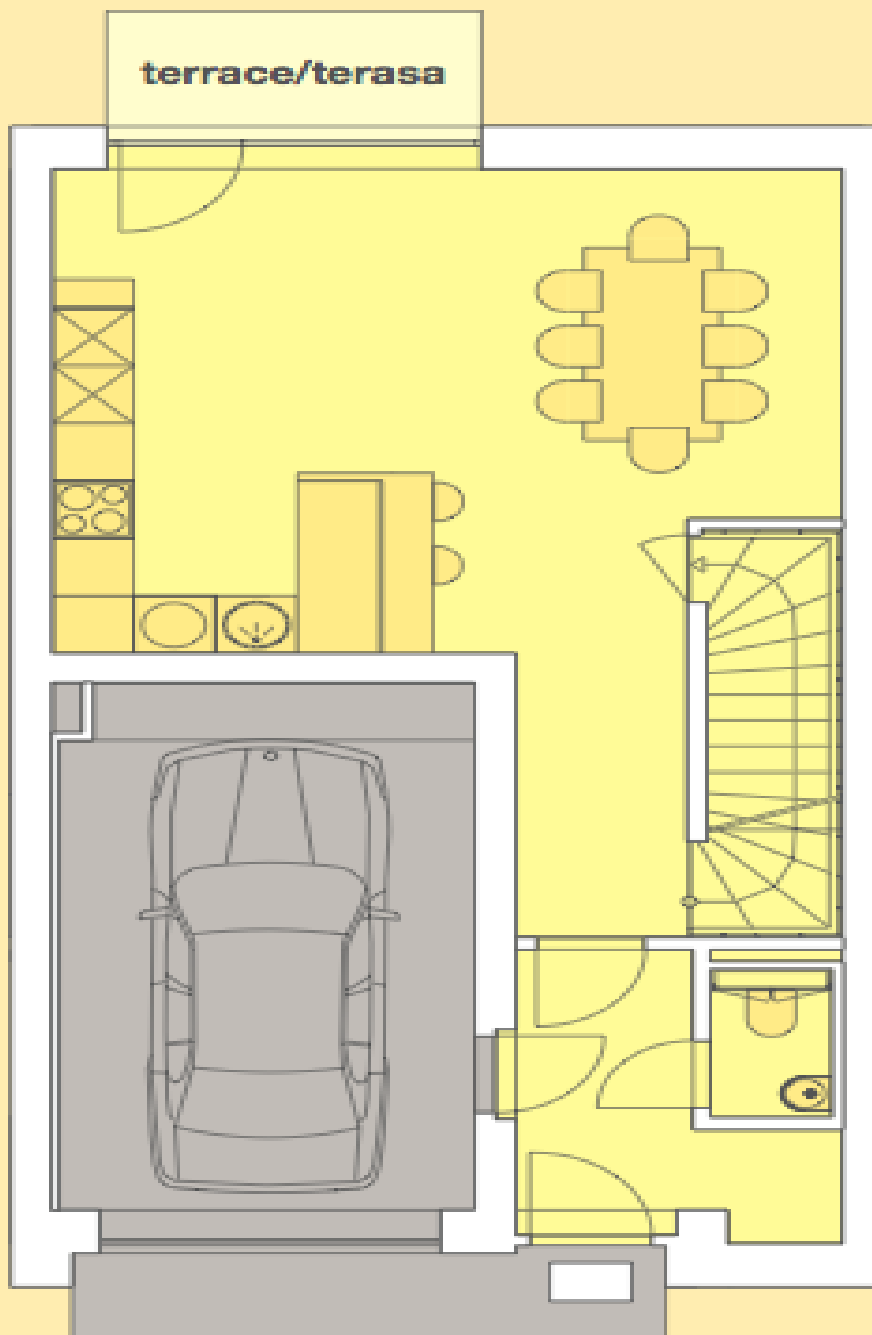




## House Three-bedroom (4+1)

170 m<sup>2</sup>, Praha-západ, Statenice, Statenice

Rented



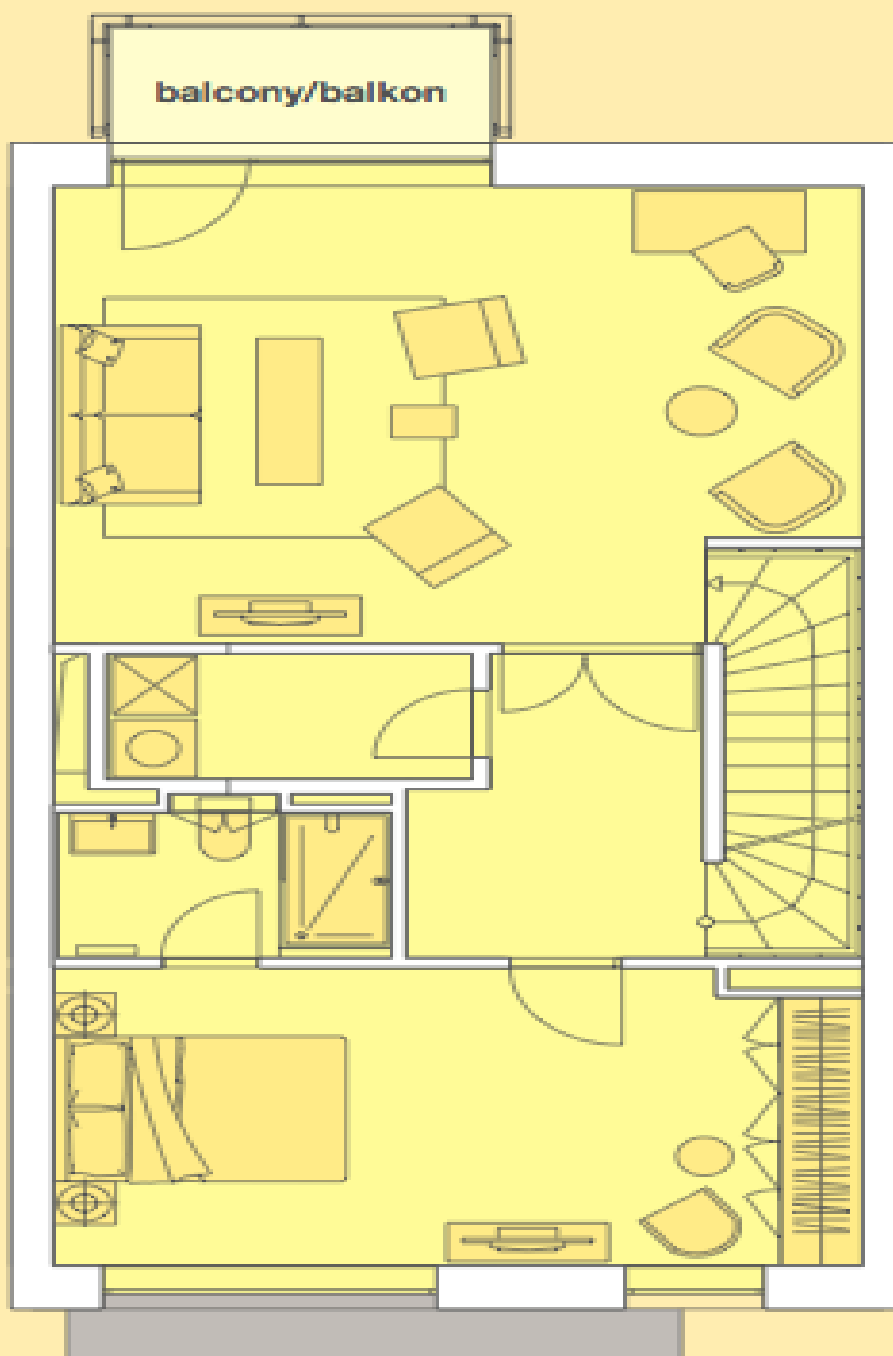
Corridor/Chodba:	5,40 m <sup>2</sup>
Garage/Garáž:	17,41 m <sup>2</sup>
Kitchen and dining area/Kuchyň a jídelna:	32,11 m <sup>2</sup>
Storage space/Úložný prostor:	3,23 m <sup>2</sup>
Toilet/WC:	1,21 m <sup>2</sup>
<b>Ground Floor/Přízemí</b>	



## House Three-bedroom (4+1)

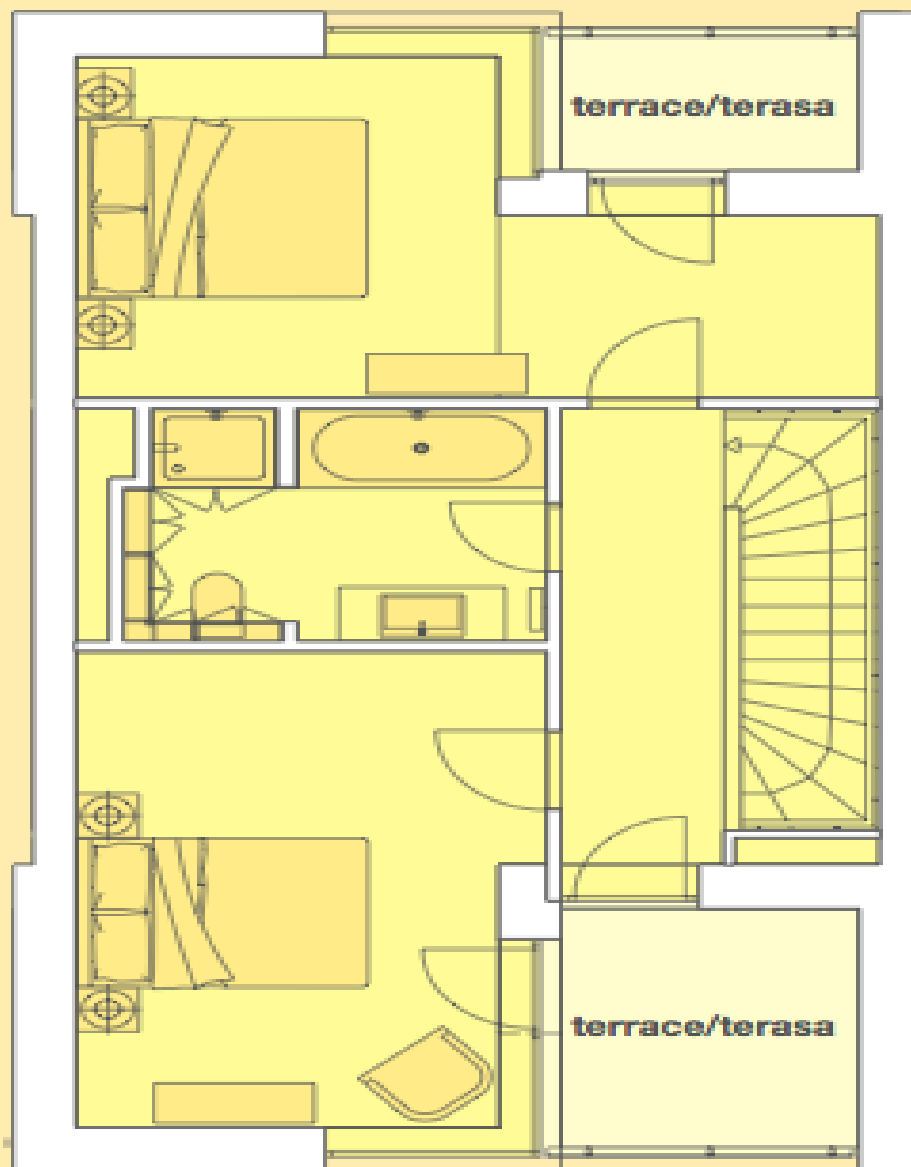
170 m<sup>2</sup>, Praha-západ, Statenice, Statenice

Rented



Bedroom/Ložnice:	17,69 m <sup>2</sup>
Corridor/Chodba + Staircase/Schodiště	10,59 m <sup>2</sup>
Living room/Obývací pokoj:	27,13 m <sup>2</sup>
Technical room/Technická místnost:	3,43 m <sup>2</sup>
Bathroom, Toilet/Koupelna, WC:	3,64 m <sup>2</sup>
Balcony/Balkon:	3,30 m <sup>2</sup>

### Floor 1/1. patro

**House Three-bedroom (4+1)**170 m<sup>2</sup>, Praha-západ, Statenice, Statenice**Rented**

Corridor/Chodba + Staircase/Schodiště:	10,02 m <sup>2</sup>
Bedroom/Ložnice:	15,61 m <sup>2</sup>
Bathroom, Toilet/Koupelna, WC:	6,67 m <sup>2</sup>
Bedroom/Ložnice:	15,40 m <sup>2</sup>
Terrace/Terasa:	5,19 m <sup>2</sup>
Terrace/Terasa:	2,93 m <sup>2</sup>

**Floor 2/2. patro**