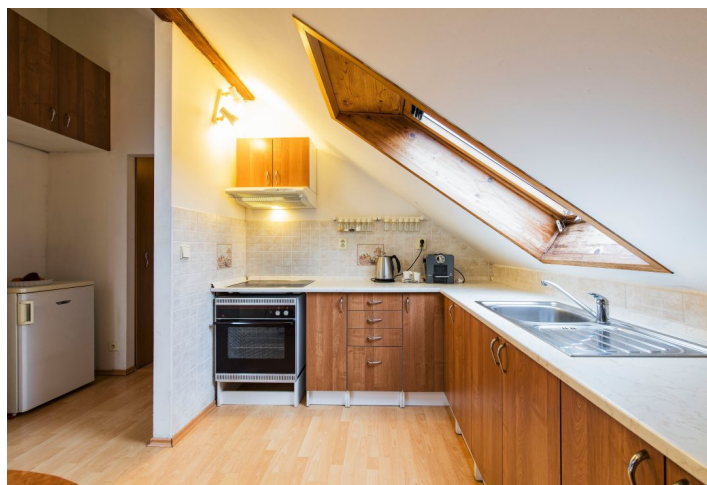




## Apartment One-bedroom (2+kk)

Rented

70 m<sup>2</sup>, Prague 9, Vysočany, Čihákova





## Apartment One-bedroom (2+kk)

Rented

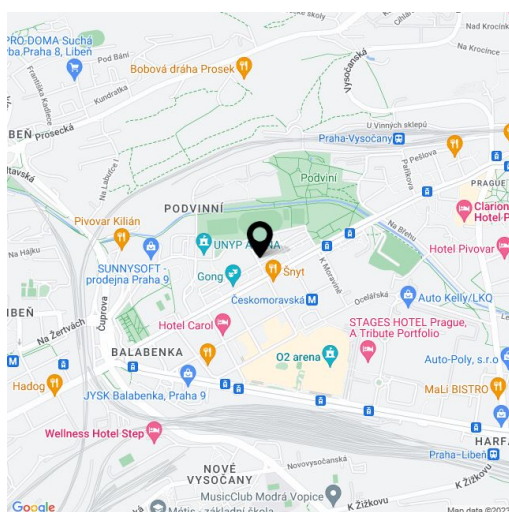
70 m<sup>2</sup>, Prague 9, Vysočany, Čihákova

Total area	70 m <sup>2</sup>
Parking	-
Cellar	-
PENB	G
Reference number	25067
Available from	Immediately

Furnished attic 1-bedroom flat in a well-maintained building in Prague 9 with lift, near the metro station (line B), tram and bus stops, in the immediate vicinity of the park Podvinný mlýn.

The apartment has a living room with fully fitted kitchen and dining area, bedroom, bathroom with tub and toilet, and an entry hall.

Floating floors, wooden beams, plenty of storage space in wardrobes. Common building charges are 500 CZK/person and utilities are billed separately. Short-term rent possible.



\* Area of the unit according to the Civil Code. The area consists of the sum total area of the entire unit bounded by perimeter walls.