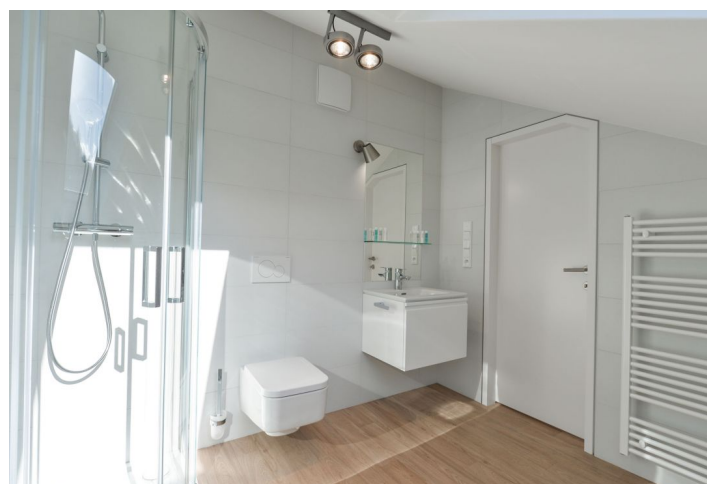




Apartment One-bedroom (2+kk)

€ 900 | CZK 22 500

40 m², Prague 6, Dejvice, V Šáreckém údolí





Apartment One-bedroom (2+kk)

€ 900 | CZK 22 500

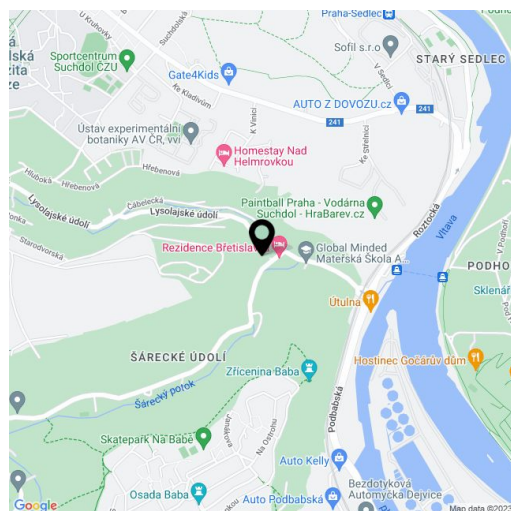
40 m², Prague 6, Dejvice, V Šáreckém údolí

Total area	40 m²
Parking	Garage parking included.
Garage	Yes
Cellar	-
PENB	G
Reference number	25108
Available from	Immediately

Fully furnished 1-bedroom attic flat with beautiful green views, on the second top floor of the residential project Břetislavka (bretislavka.cz), designed by m4 architekti studio, with superb services, garage parking and a landscaped garden on the edge of a brook. Located in the charming Šárecké Valley surrounded by green hills and peaceful countryside, with quick connection to the city center, the airport and international schools. Just a few bus stops to Dejvická metro with full amenities in the area. Project amenities include lift, 24/7 security, online reception desk, catering service provided by the adjacent restaurant, bike rental, barbecue, guide to Prague cultural venues and more.

The interior features living room, a fully fitted open kitchen, one bedroom, shower bathroom with toilet, and entrance hall.

Intelligent home control system, alarm, vinyl floors, floor heating, security entry door, built-in wardrobes and storage, roller blinds, TV, washer, dishwasher, combination microwave oven, basic dishes and kitchenware, fold out futon sofa bed, bed linen and towels. The rent includes common building charges, the Internet, security and weekly cleaning and changing of bed linen and towels. Utilities are billed separately (gas, water, electricity). Medium and long term rental available (from three months). No commission. Available from May 5, 2020.



* Area of the unit according to the Civil Code. The area consists of the sum total area of the entire unit bounded by perimeter walls.