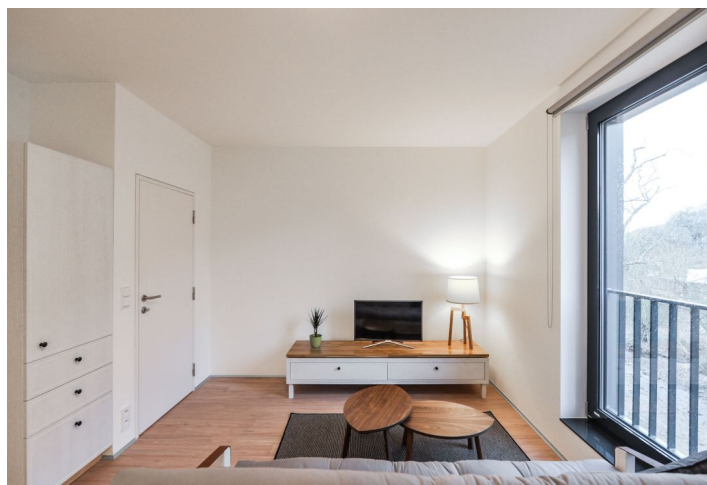




## Apartment One-bedroom (2+kk)

Rented

36 m<sup>2</sup>, Prague 6, Dejvice, V Šáreckém údolí





## Apartment One-bedroom (2+kk)

Rented

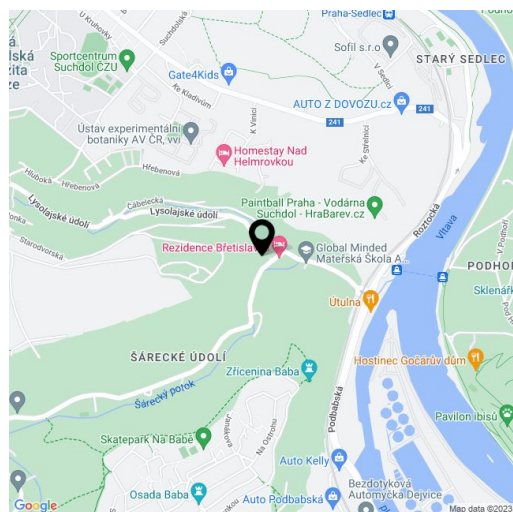
36 m<sup>2</sup>, Prague 6, Dejvice, V Šáreckém údolí

Total area	36 m <sup>2</sup>
Parking	Garage parking included.
Garage	Yes
Cellar	-
Service price	Utilities are billed separately (gas, water, electricity).
PENB	G
Reference number	25118
Available from	Immediately

This fully furnished apartment with beautiful green views, on the ground floor of the Břetislavka residential project ([bretislavka.cz](http://bretislavka.cz)), designed by the m4 architekti studio, with superb services, garage parking, and a landscaped garden on the edge of a brook is located in the charming Šárecké Valley surrounded by green hills and a peaceful countryside, with quick connections to the city center, the airport, and international schools. Just a few bus stops to the Dejvická metro station with full amenities in the area. Project amenities include an elevator, 24/7 security, an online reception desk, catering services provided by the adjacent restaurant, bike rental, barbecue, guide to Prague cultural venues, and more.

The interior features a living room with a fully fitted open plan kitchen and study area, one bedroom, a shower bathroom with a toilet, and an entrance hall.

Garden views, intelligent home control system, alarm, vinyl floors, floor heating, security entry door, built-in wardrobes and storage, roller blinds, TV, washer, dishwasher, combination microwave oven, basic dishes and kitchenware, fold-out futon sofa bed, bed linen, and towels. The rent includes common building charges, Internet, security, and weekly cleaning and changing of bed linen and towels. Medium and long-term rental available (from three months). No commission.



\* Area of the unit according to the Civil Code. The area consists of the sum total area of the entire unit bounded by perimeter walls.