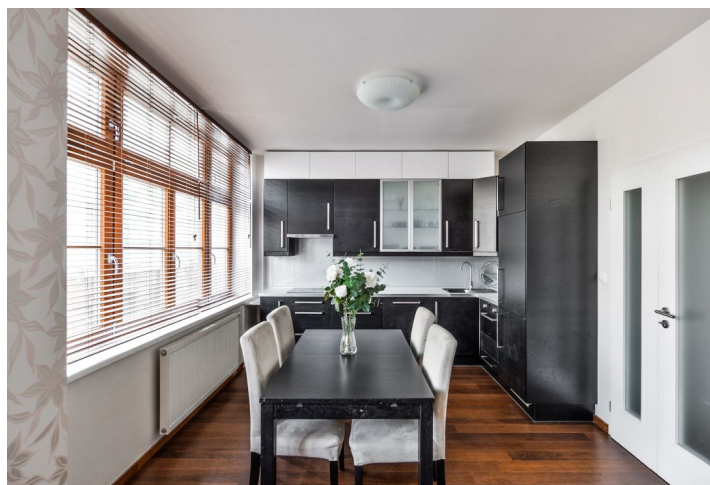
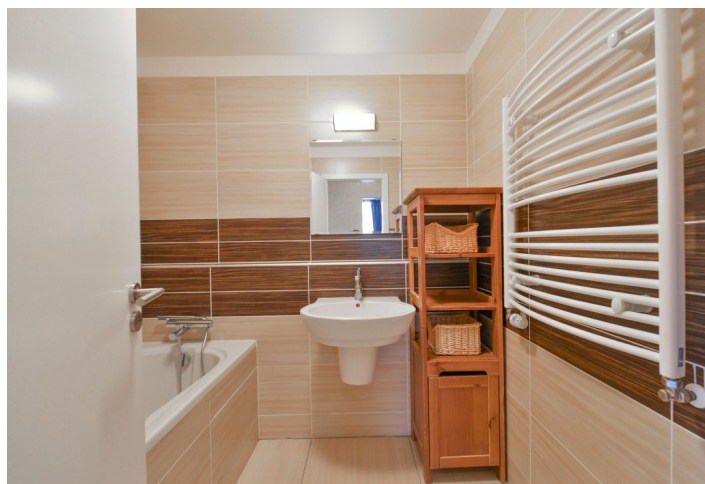




Apartment Two-bedroom (3+kk)

Rented

73 m², Prague 4, Michle, Magistrů





Apartment Two-bedroom (3+kk)

Rented

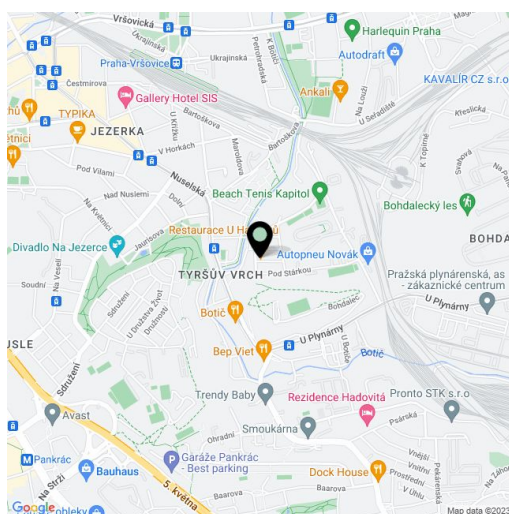
73 m², Prague 4, Michle, Magistrů

Total area	73 m ²
Parking	Outdoor parking space included.
Cellar	-
PENB	G
Reference number	25140
Available from	Immediately

Modern furnished 2-bedroom flat situated on the first floor of a completely refurbished building from 1930, with lift. Located in a quiet Michle area with the Tyršův vrch park, Botič brook and lots of greenery near by. Good amenities, school next door, quick transportation connections, 15 minutes by tram to the city center.

The interior includes living room with a fully fitted open kitchen and dining area, two separate bedrooms, bathroom with bathtub, a separate toilet, and entry hall with built-in wardrobes.

Large windows, wooden floors and tiles, security entry door, central heating, blinds, washing machine, dryer, dishwasher, microwave oven, dishes and kitchenware, TV. One parking space in front of the building included. Common building charges, heating and water approx. CZK 2500 per month. Elektricitv will be transferred to the tenant name.



* Area of the unit according to the Civil Code. The area consists of the sum total area of the entire unit bounded by perimeter walls.