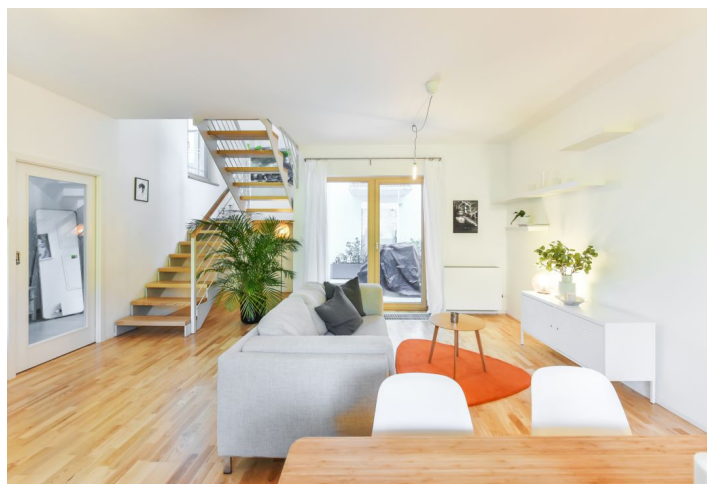




Apartment Two-bedroom (3+kk)

Rented

90 m², Prague 3, Žižkov, Koněvova





Apartment Two-bedroom (3+kk)

Rented

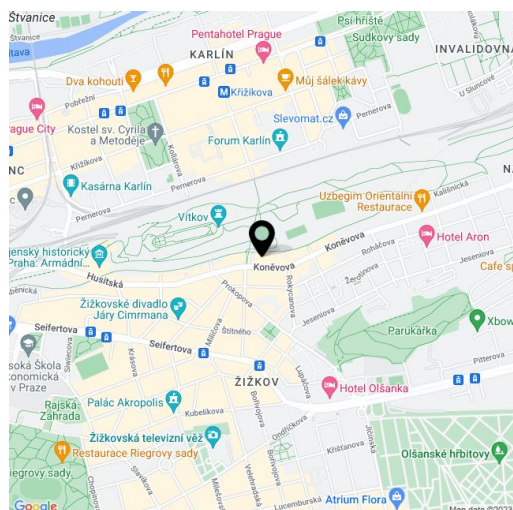
90 m², Prague 3, Žižkov, Koněvova

Total area	118 m ²
Floor area*	90 m ²
Balcony	8 m ²
Terrace	20 m ²
Parking	Garage parking at CZK 2000 per month.
Garage	Yes
Cellar	Yes
PENB	B
Reference number	25158
Available from	Immediately

Boasting wonderful views of a green slope of the Vrch Vítkov Park, this furnished 2-bedroom split-level apartment with two balconies and a courtyard terrace is on the first / fourth floor of the newly built Vitkovia Residence, with an elevator, camera system, and underground parking. Located on the edge of a large park, with good transportation connections and quick access to the city center. There is a bike path, and sporting, relaxation, and shopping facilities nearby. In close vicinity of Parukářka Park.

The lower level includes a generous living room with a fully fitted open plan kitchen and access to the courtyard **terrace** as well as a **balcony** facing the green park slope. There is also a guest toilet with a bidet and a shower, and an entrance hall. The upper level features a master bedroom with another **balcony** facing the park, a second bedroom, and a bathroom with a bathtub and a toilet.

Wooden floors, wooden / aluminum windows, light tunnels in both bedrooms, French windows, washer, dryer, **basement storage unit**. One garage parking space is available at CZK 2,000 per month. Service charges CZK 3500 per month including electricity. Internet CZK 800 per month.



* Area of the unit according to the Civil Code. The area consists of the sum total area of the entire unit bounded by perimeter walls.



Apartment Two-bedroom (3+kk)

90 m², Prague 3, Žižkov, Koněvova

Rented

