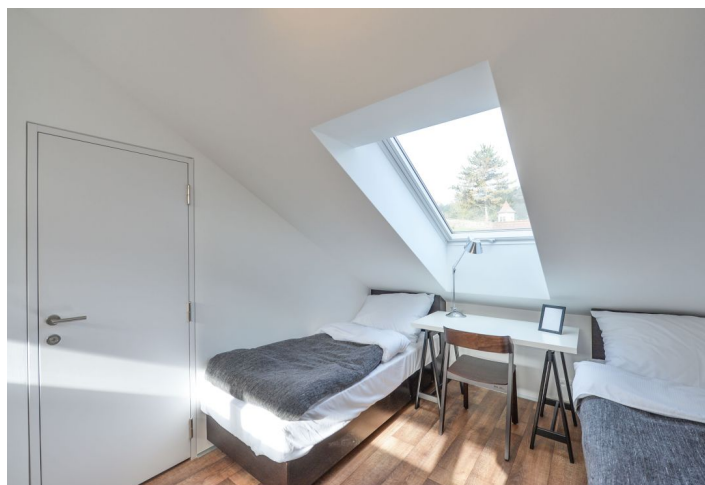




## Apartment Studio (1+kk)

€ 737 | CZK 18 500

31 m², Prague 6, Dejvice, V Šáreckém údolí





## Apartment Studio (1+kk)

€ 737 | CZK 18 500

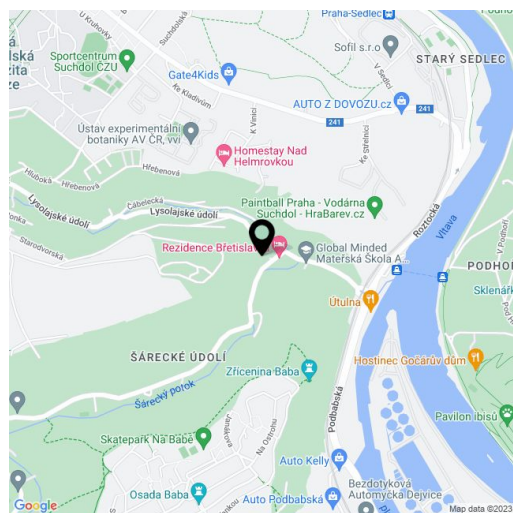
31 m², Prague 6, Dejvice, V Šáreckém údolí

|                  |                          |
|------------------|--------------------------|
| Total area       | 31 m²                    |
| Parking          | Garage parking included. |
| Garage           | Yes                      |
| Cellar           | -                        |
| PENB             | G                        |
| Reference number | 25199                    |
| Available from   | Immediately              |

Fully furnished attic studio on the second top floor of the residential project Břetislavka (bretislavka.cz), designed by m4 architekti studio, with superb services, garage parking and a landscaped garden on the edge of a brook. Located in the charming Šárecké Valley surrounded by green hills and peaceful countryside, with quick connection to the city center, the airport and international schools. Just a few bus stops to Dejvická metro with full amenities in the area. Project amenities include lift, 24/7 security, online reception desk, catering service provided by the adjacent restaurant, bike rental, barbecue, guide to Prague cultural venues and more.

The interior features living room / bedroom, a fully fitted walk-through kitchen, shower bathroom with toilet, and entrance hall.

Intelligent home control system, alarm, vinyl floors, floor heating, security entry door, built-in wardrobes and storage, roller blinds, TV, washer, combination microwave oven, basic dishes and kitchenware, fold out sofa bed, bed linen and towels. One garage parking space included. The rent also includes common building charges, the Internet, security and weekly cleaning and changing of bed linen and towels. Utilities are billed separately (gas, water, electricity). Medium and long term rental available (from three months). No commission.



\* Area of the unit according to the Civil Code. The area consists of the sum total area of the entire unit bounded by perimeter walls.