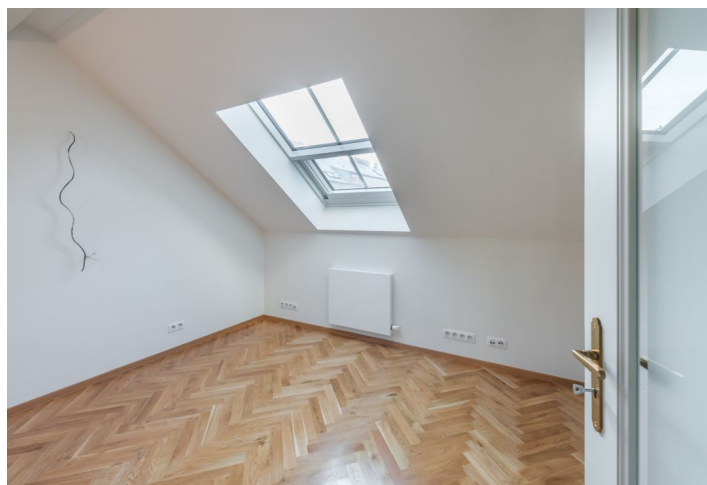
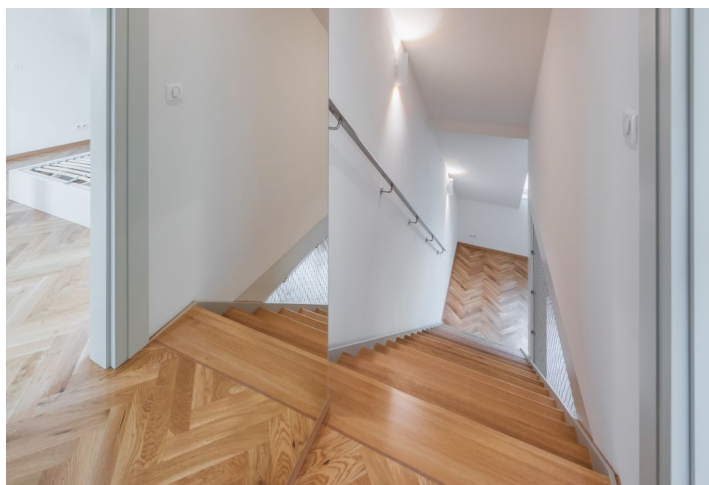




Apartment Three-bedroom (4+kk)

Sold

141 m², Praha 1, Staré Město, Valentinská





Apartment Three-bedroom (4+kk)

Sold141 m², Praha 1, Staré Město, Valentinská

Total area	141 m ²
Parking	Garage parking space at extra cost
Garage	Yes
Cellar	-
PENB	G
Reference number	25295

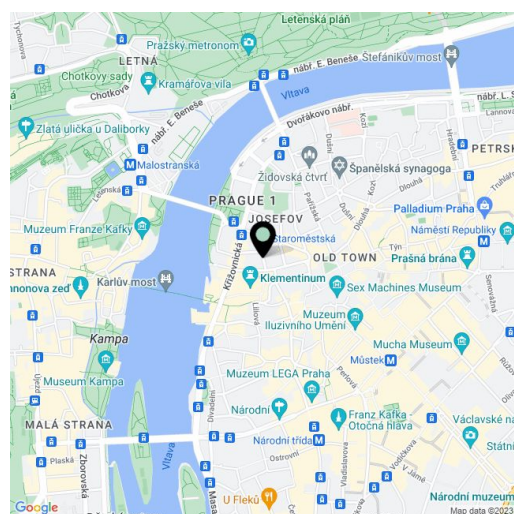
Newly built spacious duplex apartment on the top floor of a completely renovated residence not far from Old Town Square and Charles Bridge. The building from the late 19th century was reconstructed with an emphasis on its original architectural value, high quality materials, and an eye for detail.

The layout of the entry level on the **5th floor** offers an entrance hall, a living room with a preparation for a kitchen, and space for a dining table, 2 bedrooms, a bathroom, a separate toilet, and a dressing room. Upstairs, there is a third bedroom with an en-suite bathroom.

The overall concept of the reconstruction and selection of standards was carried out in collaboration with **Studio Arch architects** and the world-renowned Spanish designer **Patricia Urquiola**. Features include, for example, **oiled parquet floors, replicas of a wooden cassette doors with brass fittings**, Mutina - Azule large-format bathroom tiles, Villeroy & Boch bathroom sanitary ware, Steinberg fixtures, etc. A **garage parking space is available at extra cost**.

The house is located near the Charles Bridge on a side street that is on the site of one of the oldest paths in Prague, mentioned by the chronicler Cosmas. The location offers a unique environment full of architectural gems and a wide range of social and cultural modern European urban activities, such as shopping, dining in first-class restaurants, and taking advantage of a variety of cultural events in the nearby **Rudolfinum**, for example. Full public amenities are within walking distance or easily accessible by public transport, metro and tram stops are a few steps from the house.

Usable area 141.4 m².



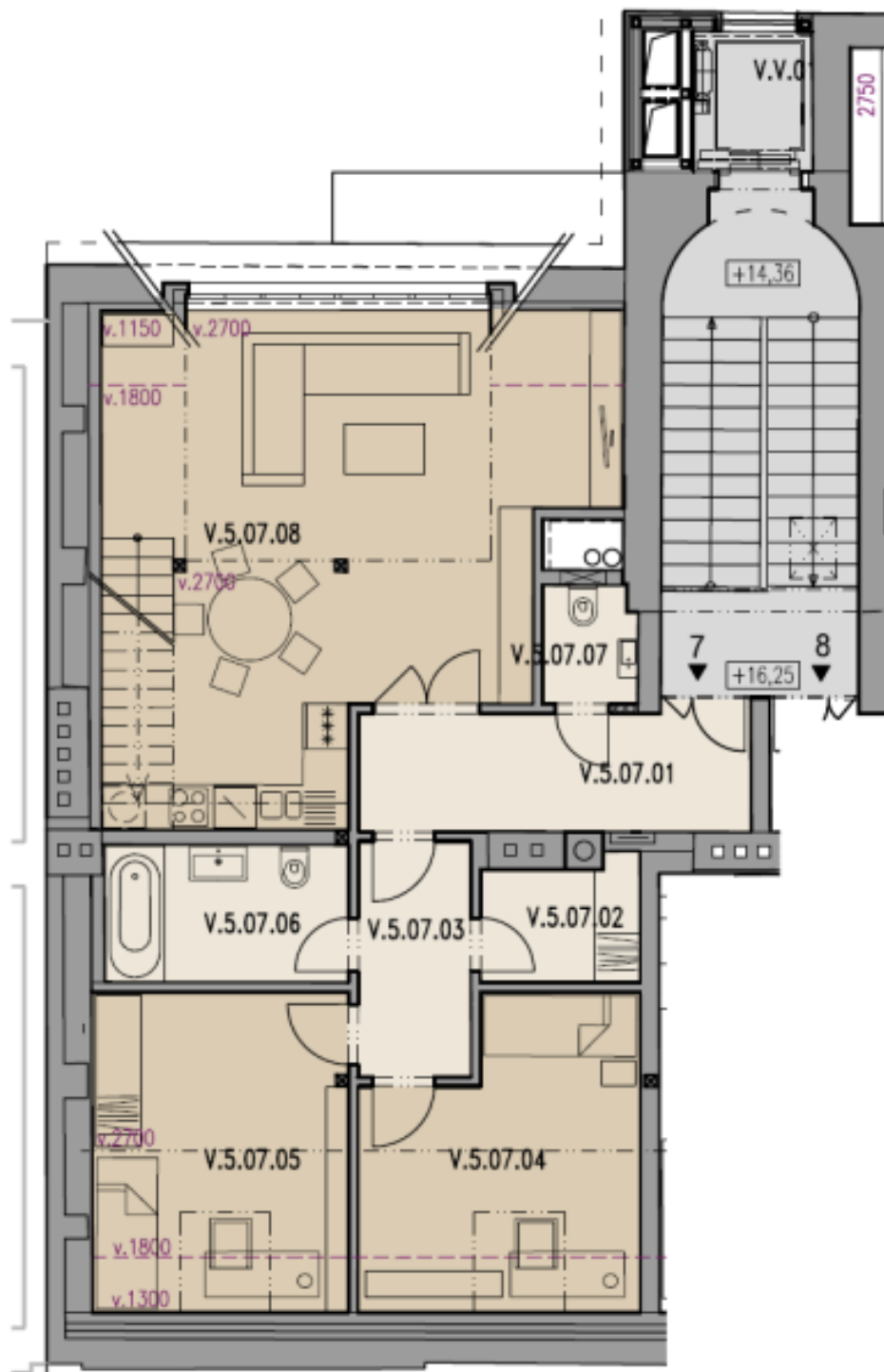
* Area of the unit according to the Civil Code. The area consists of the sum total area of the entire unit bounded by perimeter walls.



Apartment Three-bedroom (4+kk)

Sold

141 m², Praha 1, Staré Město, Valentinská



MEZONETOVÝ BYT - SPODNÍ ÚROVEŇ





Apartment Three-bedroom (4+kk)

Sold

141 m², Praha 1, Staré Město, Valentinská

