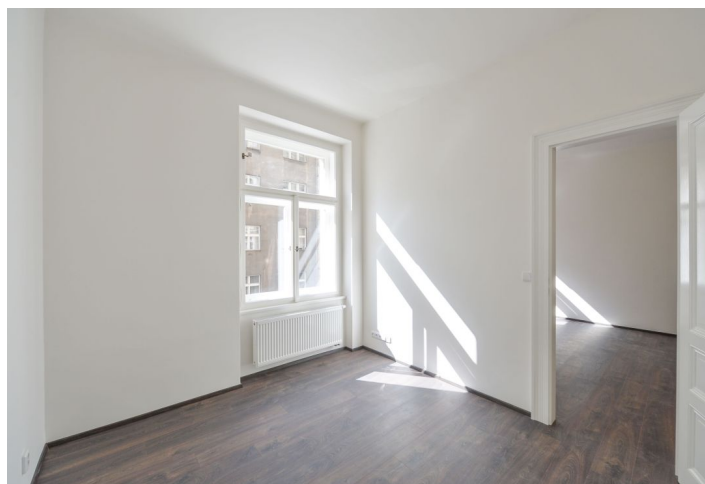




Apartment One-bedroom (2+kk)

Rented

47 m², Prague 10, Vršovice, Na Spojce





Apartment One-bedroom (2+kk)

Rented

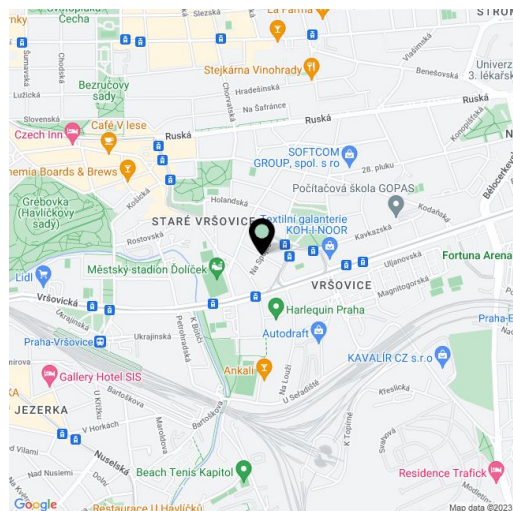
47 m², Prague 10, Vršovice, Na Spojce

Total area	47 m ²
Parking	-
Cellar	-
PENB	G
Reference number	25307
Available from	Immediately

Fully newly refurbished 1-bedroom flat with preserved original details, on the first floor of a traditional residential building with lift in a quiet street in Prague 10 - Vršovice. Located in close vicinity of the Heroldovy sady park, with quick access to the city center, a few tram or bus stops to Náměstí Míru metro station, line A. Within easy reach of full public amenities incl. schools, shops, restaurants and cafés.

The interior includes a living room with a fully fitted open kitchen, one bedroom with a large walk-in closet, shower bathroom with toilet, and entry hall.

Floating floors, tiles, security entry door, high ceilings, large windows, recessed lighting, gas heating, washer, dishwasher. Common building charges and water around CZK 1500 per month. Gas and electricity are billed separately.



* Area of the unit according to the Civil Code. The area consists of the sum total area of the entire unit bounded by perimeter walls.