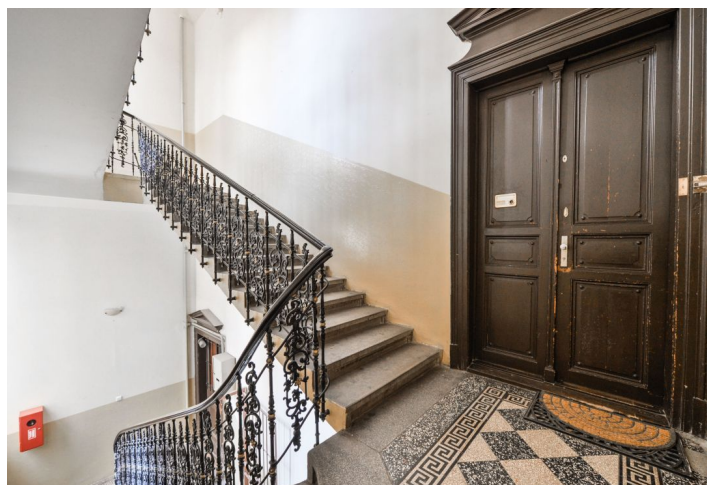




Apartment Three-bedroom (4+1)

Sold

133 m², Prague 1, Nové Město, Opletalova





Apartment Three-bedroom (4+1)

Sold133 m², Prague 1, Nové Město, Opletalova

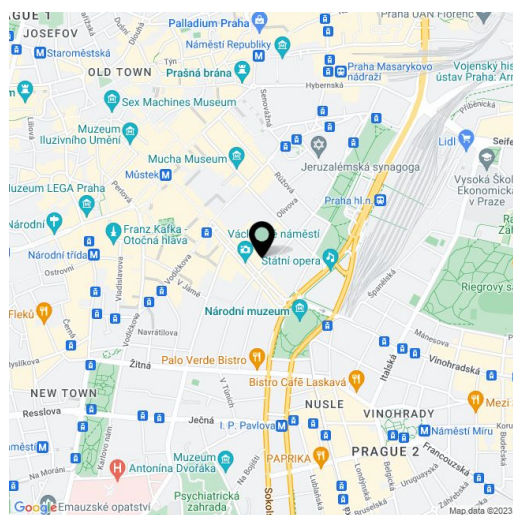
Total area	136 m ²
Floor area*	133 m ²
Balcony	3 m ²
Parking	-
Cellar	Yes
PENB	G
Reference number	25316

Three-bedroom apartment with a balcony, suitable for a complete reconstruction, located on the 2nd floor of a residential building without a lift. Just a 5- minute walk from Wenceslas Square, Republic Square and the main train station.

The layout features a living room, separate kitchen, 3 bedrooms, bathroom, separate toilet, pantry, and a hall. The layout offers the possibility of creating two separate units, suitable both for lease or multi-generation living. Equipped with **original wood parquet flooring, original casement windows** without insulation, gas boiler. **4.5 m high ceilings.**

This sought-after central location boasts all civic amenities and good public transport connections, including all metro lines. There are many possibilities of entertainment and cultural and sports activities, as well as schools, cafes and restaurants.

Interior 133 m², balcony 2.5 m².



* Area of the unit according to the Civil Code. The area consists of the sum total area of the entire unit bounded by perimeter walls.