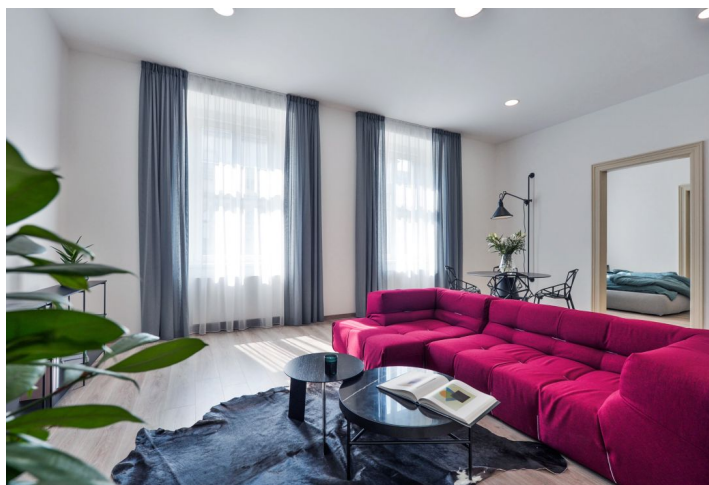
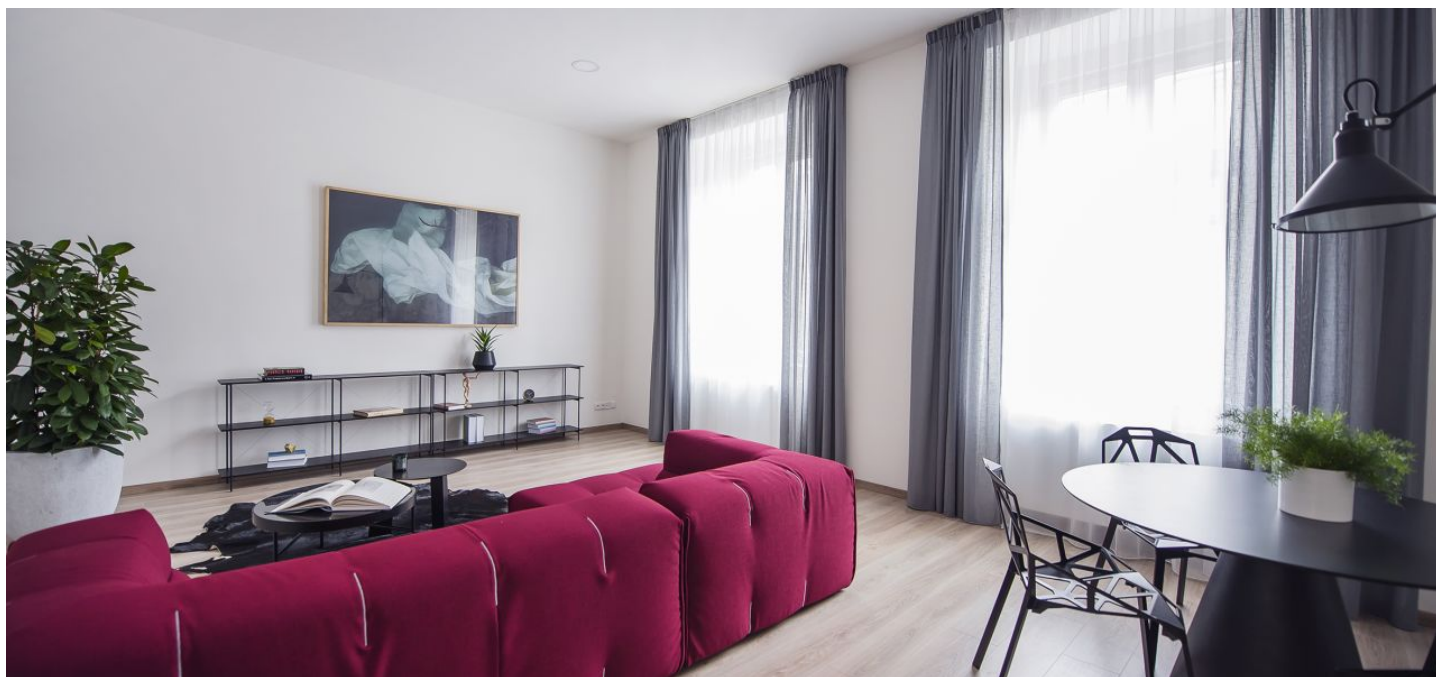




Apartment Two-bedroom (3+kk)

Sold

128 m², Praha 8, Karlín, Křižíkova





Apartment Two-bedroom (3+kk)

Sold128 m², Praha 8, Karlín, Křižíkova

| | |
|------------------|--------------------|
| Total area | 128 m ² |
| Parking | - |
| Cellar | - |
| Service price | 3 109 CZK monthly |
| PENB | G |
| Reference number | 25338 |

Spacious and bright three-bedroom apartment after reconstruction, situated in Prague 8 - Karlín, near the Florenc metro station and directly opposite the Music Theater Karlín.

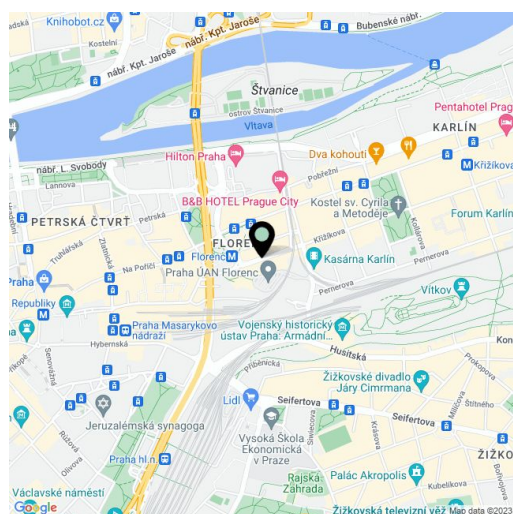
The interior includes a large living room leading to a fully equipped kitchen, bedroom with a private bathroom (w/ bathtub & shower) and entrance into a room suitable for using as a dressing room or study, a second bedroom, utility room and another bathroom with separate toilet.

Furnishings include Alfalux large format tiles, Paffoni, Paini, Kos and Hansgrohe sanitaryware, a bathtub made of cast marble, Egger wood flooring, new wooden windows, renovated double-leaf doors, kitchen appliances by Whirlpool and Bosch, Sappho heating ladders and gas boiler. Plasterboard ceilings with energy-saving LED lighting, completely new plumbing (water, gas, heating, waste), plaster and stucco. The house is in its original condition, without an elevator.

The location offers all amenities including many of restaurants, cafes, supermarkets, several ATMs, metro station (Line B / C), bus and tram stops just a few steps from the house. Primary school, kindergarten and several high schools nearby.

The apartment is in a cooperative ownership with outstanding annuity. Possibility of transfer to private ownership after additional payment.

Interior 128 m².



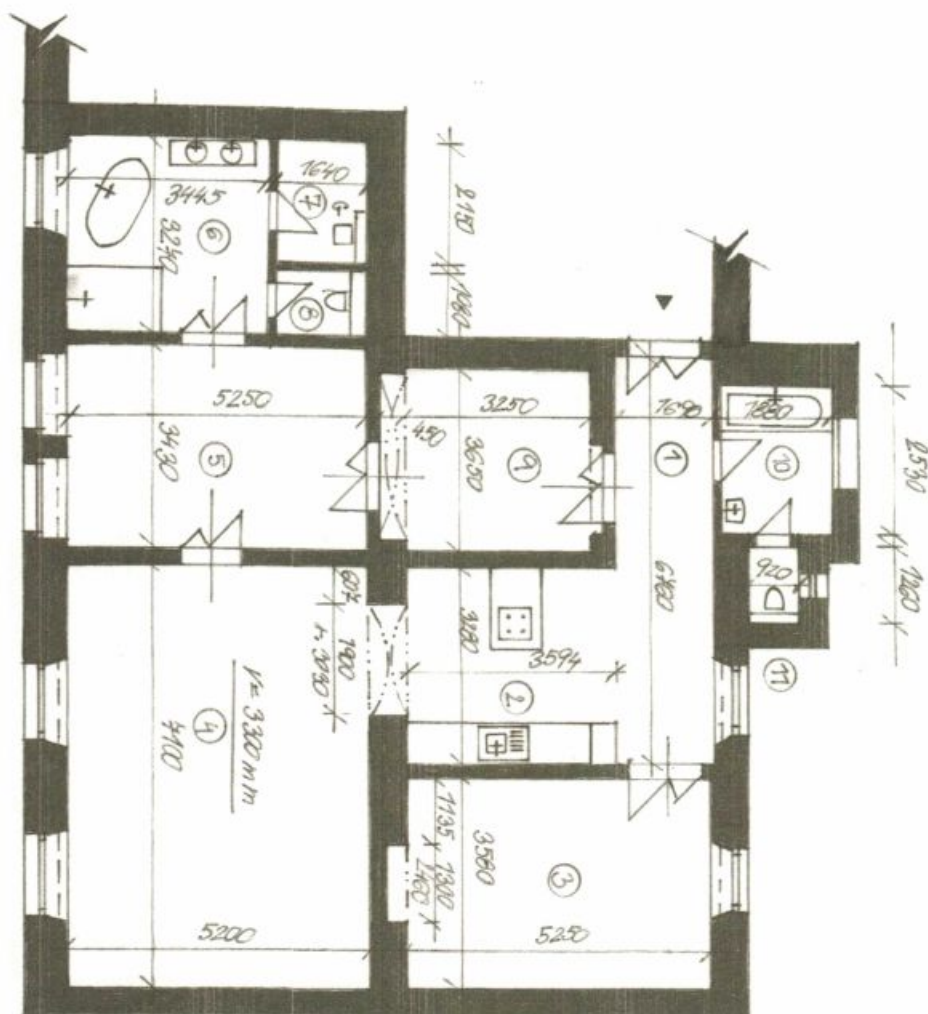
* Area of the unit according to the Civil Code. The area consists of the sum total area of the entire unit bounded by perimeter walls.



Apartment Two-bedroom (3+kk)

128 m², Praha 8, Karlín, Křížkova

Sold



Zaměření bytu Křížkova ul., Praha 8

| | |
|---------------------------|----------------------------|
| 1 - bytová chodba | 11,44m ² |
| 2 - kuchyň | 10,90m ² |
| 3 - pokoj do dvora | 18,77m ² |
| 4 - pokoj do ulice | 39,60m ² |
| 5 - malý pokoj do ulice | 19,98m ² |
| 6 - koupelna do ulice | 10,27m ² |
| 7 - technická místnost | 3,43m ² |
| 8 - WC | 1,70m ² |
| 9 - šatna | 11,15m ² |
| 10 - koupelna do dvora | 4,76m ² |
| 11 - WC | 1,03m ² |
| Celkem plocha bytu | 128,33m² |