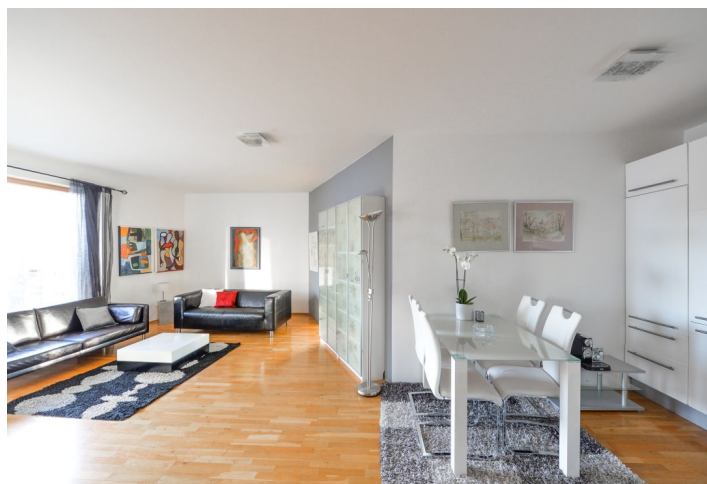




Apartment Three-bedroom (4+kk)

Sold

85 m², Prague 6, Vokovice, Tibetská





Apartment Three-bedroom (4+kk)

Sold85 m², Prague 6, Vokovice, Tibetská

Total area	110 m ²
Floor area*	85 m ²
Terrace	25 m ²
Parking	1 garage parking space
Garage	Yes
Cellar	Yes
Service price	6 682 CZK monthly
PENB	G
Reference number	25396

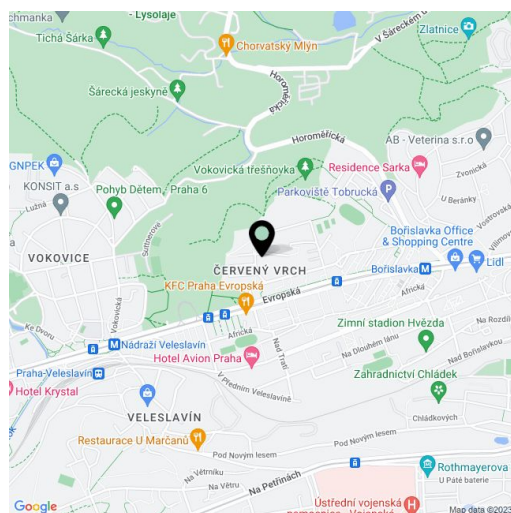
Benefiting from a 30 m² terrace is this sunny 3-bedroom flat on the elevated ground floor of the Terasy Červený Vrch residence with a reception, security and underground parking. Located within easy reach of the wonderful Šárka Valley, convenient to the airport, and just a short drive to the International School of Prague in Nebušice. Minutes to a tram stop, a few more to the Bořislavka metro station.

The interior includes a living room with a fully fitted open-plan kitchen with terrace access, three bedrooms, bathroom with bathtub and toilet, and an entry hall.

Equipped with **solid wood parquet floors**, ceramic tiles, security entry door, blinds, audio entry phone. The purchase price includes **1 onsite underground garage parking space** and a **basement storage unit**. Barrier free access.

Peaceful street just around the corner from the Šárka nature reserve, close to Džbán dam. In the nearby surroundings you can find a kindergarten and elementary school, high school, supermarket, restaurants, cafes, several playgrounds, pharmacy and other services.

Interior 84.88 m², terrace 24.8 m².



* Area of the unit according to the Civil Code. The area consists of the sum total area of the entire unit bounded by perimeter walls.



Apartment Three-bedroom (4+kk)

85 m², Prague 6, Vokovice, Tibetská

Sold

