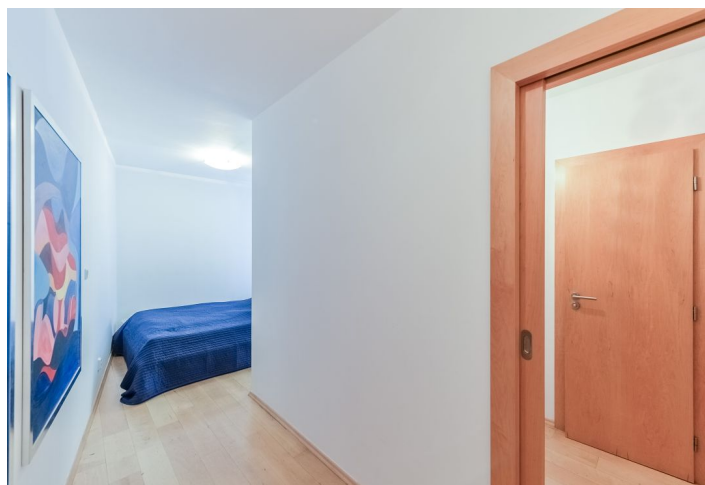




## Apartment Studio (1+kk)

40 m<sup>2</sup>, Prague 9, Vysočany, Nepilova

Sold





## Apartment Studio (1+kk)

40 m<sup>2</sup>, Prague 9, Vysočany, Nepilova

**Sold**

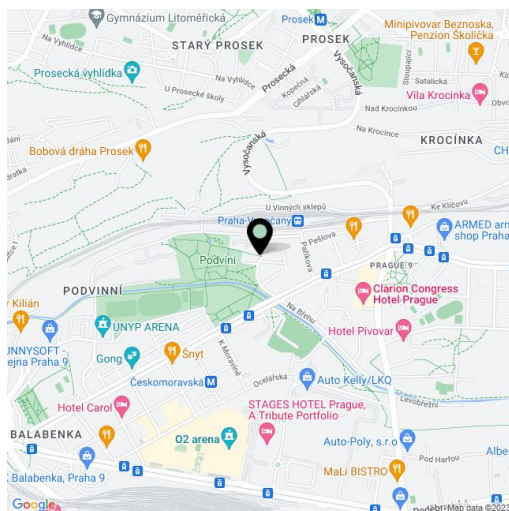
Total area	40 m <sup>2</sup>
Parking	-
Cellar	-
Service price	3 062 CZK monthly
PENB	C
Reference number	25519

**Fully furnished and equipped temporary residence studio, situated on the 2nd floor of a modern residential project with 24-hour reception and security cameras. Quiet location in the immediate vicinity of Podviní Park, with quick connections to the city center - just two minutes by foot to the Vysočanská metro station, buses and trams.**

The interior offers a living room with a fully fitted open kitchen and breakfast bar, a partly separated bedroom area, bathroom with bathtub and toilet, and entry hall. The windows are oriented towards a quiet green courtyard. Facilities include solid wood floors, ceramic tiles, plastic eurowindows, security entry door, suspended plastered ceilings with spotlights.

Pleasant residential part of Vysočany, only steps from Podviní Park, which boasts a rope center, children's and dog playgrounds and a Celtic settlement. Within walking distance of shopping and amenities, including the Fénix Shopping gallery.

Interior 39.7 m<sup>2</sup>



\* Area of the unit according to the Civil Code. The area consists of the sum total area of the entire unit bounded by perimeter walls.