



## House Five-bedroom (6+kk)

Sold

192 m<sup>2</sup>, Prague 6, Nebušice





## House Five-bedroom (6+kk)

**Sold**192 m<sup>2</sup>, Prague 6, Nebušice

Usable area	192 m <sup>2</sup>
Plot	560 m <sup>2</sup>
Foot print	188 m <sup>2</sup>
Garden	372 m <sup>2</sup>
Floor area	189 m <sup>2</sup>
Balcony	3 m <sup>2</sup>
Parking	Garage for 2 cars
Garage	Yes
Cellar	-
PENB	D
Reference number	25620

**Well-equipped, fully furnished villa after a complete reconstruction is a part of a residential complex in the beautiful surroundings of Nebušice, Prague 6, directly adjacent to the lovely nature area of Šárecké Valley. Pleasant and peaceful location offers nice family living with a good environment for children, excellent access to the city center and the prestigious International School of Prague within walking distance.**

The ground floor of this 5-bedroom villa consists of an entrance hall, spacious living room and dining room with access to the garden, kitchen, utility room accessible both from garage and garden, and a separate toilet. The second floor consists of three bedrooms (including the master bedroom with a private bathroom and walk-in wardrobe), a study, 2 additional bathrooms, and a separate toilet. There is a **garage for two cars**.

High standard of equipment and furnishings includes **air-conditioning** in two bedrooms, wooden interior doors and windows, oak parquet floors, **Italian and Spanish ceramic tiles**, polyamide carpets, fully equipped ALNO kitchen, built-in wardrobes, security system with connection to ARC, and a gas boiler.

The house is located on the edge of Nebušice, near a playground and the above-mentioned **International School of Prague**. Within a few minutes by foot or by the bus, there is a primary school, music school, solarium, tennis court, bowling alley, supermarket, several restaurants, and a post office. Direct public transport links to the Bořislavka metro station.

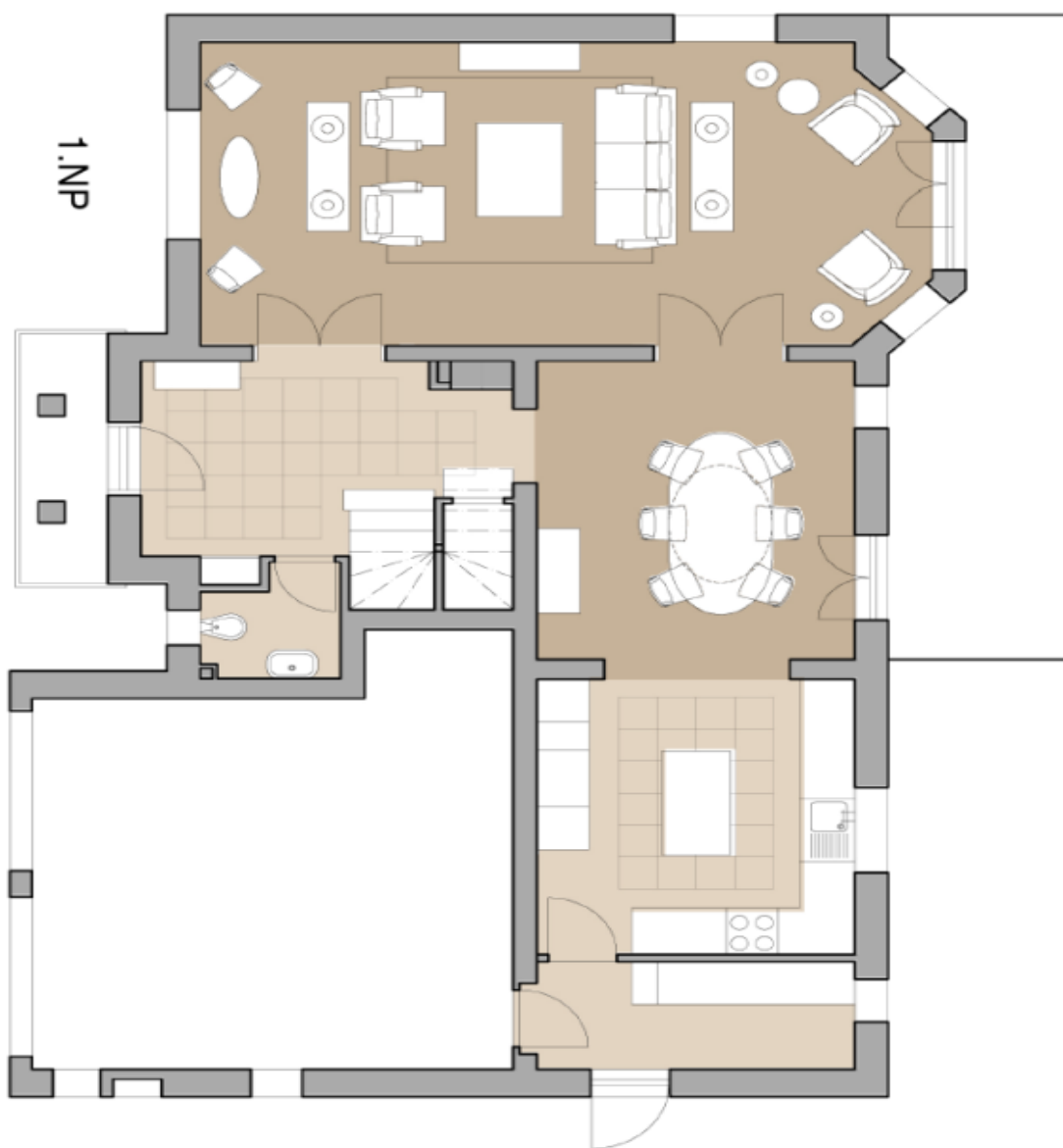
Interior 189 m<sup>2</sup>, built-up area 188 m<sup>2</sup>, garden 372 m<sup>2</sup>, plot 560 m<sup>2</sup>.



## House Five-bedroom (6+kk)

192 m<sup>2</sup>, Prague 6, Nebušice

**Sold**





## House Five-bedroom (6+kk)

192 m<sup>2</sup>, Prague 6, Nebužice

Sold

