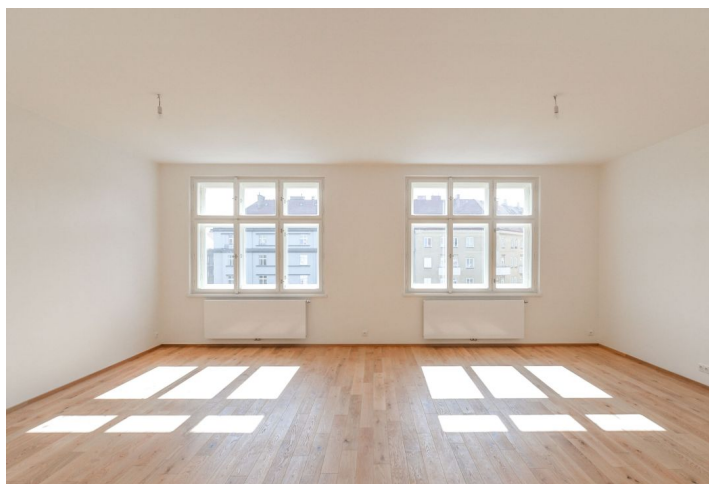




## Apartment Four-bedroom (5+kk)

Rented

160 m<sup>2</sup>, Prague 6, Dejvice, Wuchterlova





## Apartment Four-bedroom (5+kk)

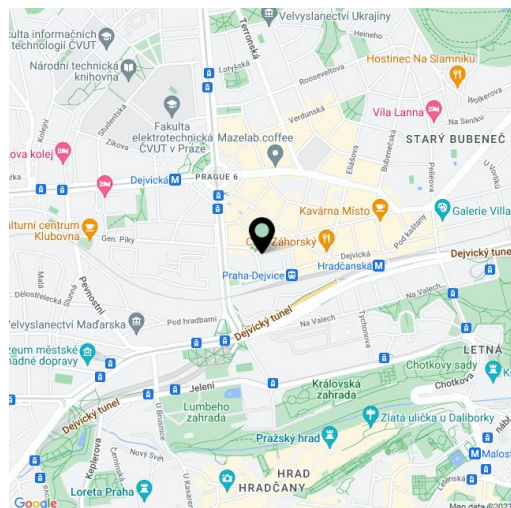
**Rented**160 m<sup>2</sup>, Prague 6, Dejvice, Wuchterlova

Total area	163 m <sup>2</sup>
Floor area*	160 m <sup>2</sup>
Balcony	3 m <sup>2</sup>
Parking	Garage parking can be arranged nearby.
Garage	Yes
Cellar	Yes
PENB	E
Reference number	25646
Available from	Immediately

**Brand new renovated 4-bedroom 2-bathroom flat with a balcony and a lovely view of the adjacent square, on the fifth floor of completely newly reconstructed 1932 corner building with lift. Located in an attractive part of Prague 6, with full amenities in the area and quick access to the city center - just steps from Dejvická metro and trams. Convenient to the airport and international schools, within walking distance of the Prague Castle and Stromovka Park.**

The interior includes a spacious living room with dining area and a fully fitted open kitchen, four bedrooms (one with a balcony facing the courtyard), two shower bathroom with toilet and bidet shower (one is en-suite), pantry, a guest toilet, and entrance hall. All bedrooms and the entrance hall are equipped with large built-in wardrobes.

Large windows, high ceilings, wooden floors, tiles, security entry door, curtains, blackout blinds, central heating, washer, induction cooktop, dishwasher, video entry phone, UPC cable, cellar. Underground garage parking available in the adjacent square at CZK 4000/month. Deposit for common building charges, water and heating approx CZK 5600 per month. Electricity will be transferred to the tenant. Available from July 2019.



\* Area of the unit according to the Civil Code. The area consists of the sum total area of the entire unit bounded by perimeter walls.



# Apartment Four-bedroom (5+kk)

Rented

160 m<sup>2</sup>, Prague 6, Dejvice, Wuchterlova

