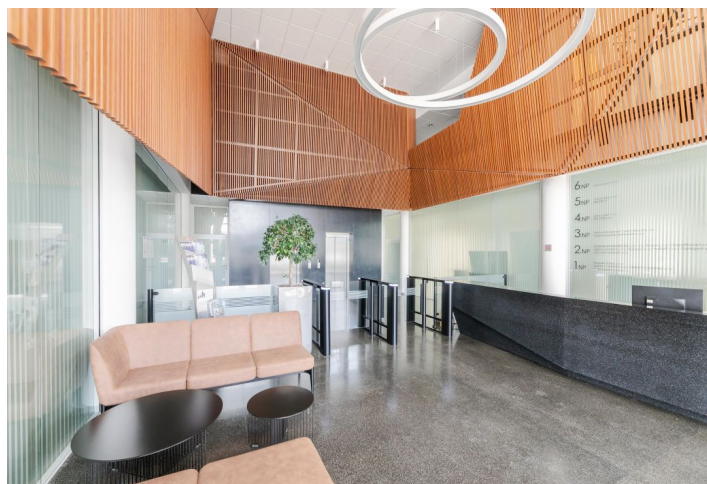




# Office space

Prague 4, Michle, Jemnická

Rented





## Office space

Prague 4, Michle, Jemnická

**Rented**

Service price	198 CZK monthly per m <sup>2</sup>
Available area	199 m <sup>2</sup>
Cellar	-
Parking	EUR 115 / ps / month
PENB	G
Reference number	25666

Office space for rent on the ground floor of a modern administrative building situated in Prague 4. Very comfortable premises can be used as open-plan or single units.

**Location:**

Very good accessibility by car and public transport – the Budějovická and Kačerov metro stations (line C) are just 2 minutes by bus or 8 minutes on foot. A shuttle bus connects the building with the metro stations. Easy access to Prague's Ring Road and to the D1 highway leading to Brno.

**Features and services:**

- central reception
- 24/7 security service
- 24/7 access
- green rooftop for tenants
- flexible office layout
- openable windows with external sunblinds
- air-conditioning
- raised floors
- kitchenette and toilets on each floor
- underground parking
- wide selection of services available in BB Centrum

**Available from October, 2024.**

Rental and service charges listed without VAT. Lessee pays no commission.

