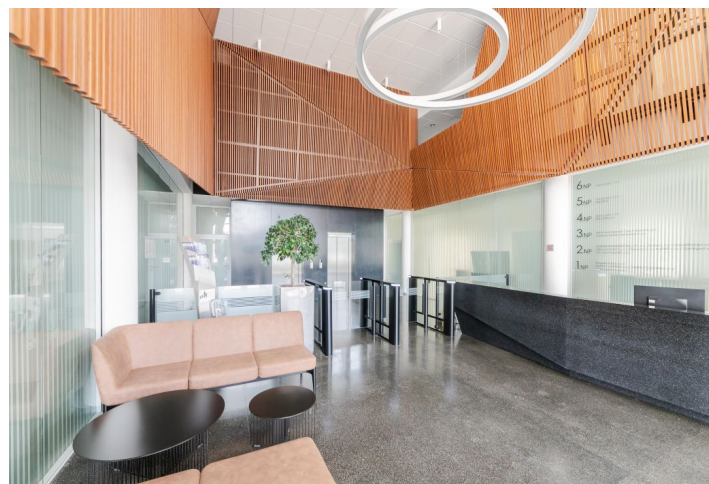




# Office space

Prague 4, Michle, Jemnická

Rented



**Office space**

Prague 4, Michle, Jemnická

**Rented**

<b>Service price</b>	198 CZK monthly per m <sup>2</sup>
<b>Available area</b>	615 m <sup>2</sup>
<b>Cellar</b>	-
<b>Parking</b>	EUR 110 / ps / month
<b>PENB</b>	G
<b>Reference number</b>	25668

Office space for lease on the 3rd floor in a modern administrative building situated in Prague 4.

**Location:**

Very good accessibility by car and public transport – the Budějovická and Kačerov metro stations (line C) are just 2 minutes by bus or 8 minutes on foot. A shuttle bus connects the building with the Budějovická metro station. Easy access to Prague's Ring Road and to the D1 highway leading to Brno.

**Features and services:**

- Central reception
- 24/7 security service
- 24/7 access
- Green rooftop terrace for tenants
- Openable windows with external sunblinds
- Air-conditioning
- Raised floors
- Kitchenette and toilets on each floor
- Warehouse space
- Underground parking
- Wide selection of services available in BB Centrum

Photos may not represent the actual condition of the premises.

Rental and service charges listed without VAT. Lessee pays no commission.

