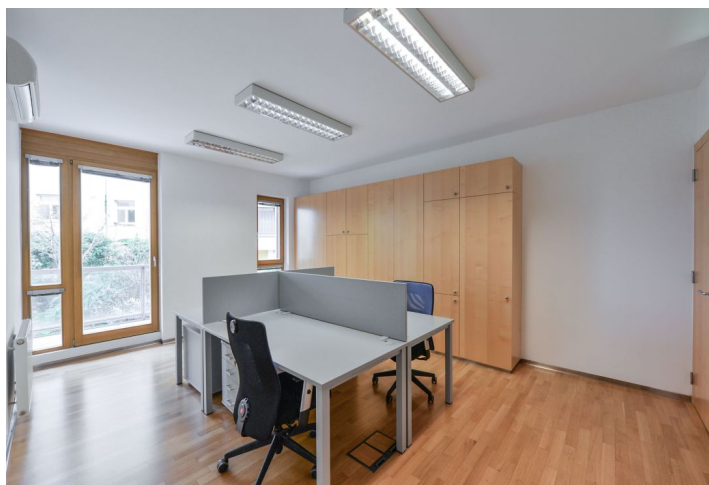




# Office building

Prague 4, Podolí, Podolská

Rented



**Office building**

Prague 4, Podolí, Podolská

**Rented**

Service price	61 CZK monthly per m <sup>2</sup>
Total building area	125 m <sup>2</sup>
Tenant consumption	—
Parking	Yes
Parking service charges	—
Parking ratio	—
Certification	—
PENB	G
Reference number	25843

**This multifunctional building offers representative office premises for lease in a quiet location of Prague 4 - Podolí.**

**Location:**

Located within easy reach of full amenities, with excellent transportation connections – just a few moments from tram stops, within walking distance of the Pražského povstání metro station, and close to the city highway with a direct connection to the D1 highway.

**Features and Services:**

Wiring  
Openable windows  
Internal blinds  
Floating floors  
Kitchenette and toilets  
Underground parking in the building  
Kitchenette, 2 small storage rooms, WC,  
Common garden.  
Air-condition

Rental and service charges listed without VAT. Lessee pays no commission.

