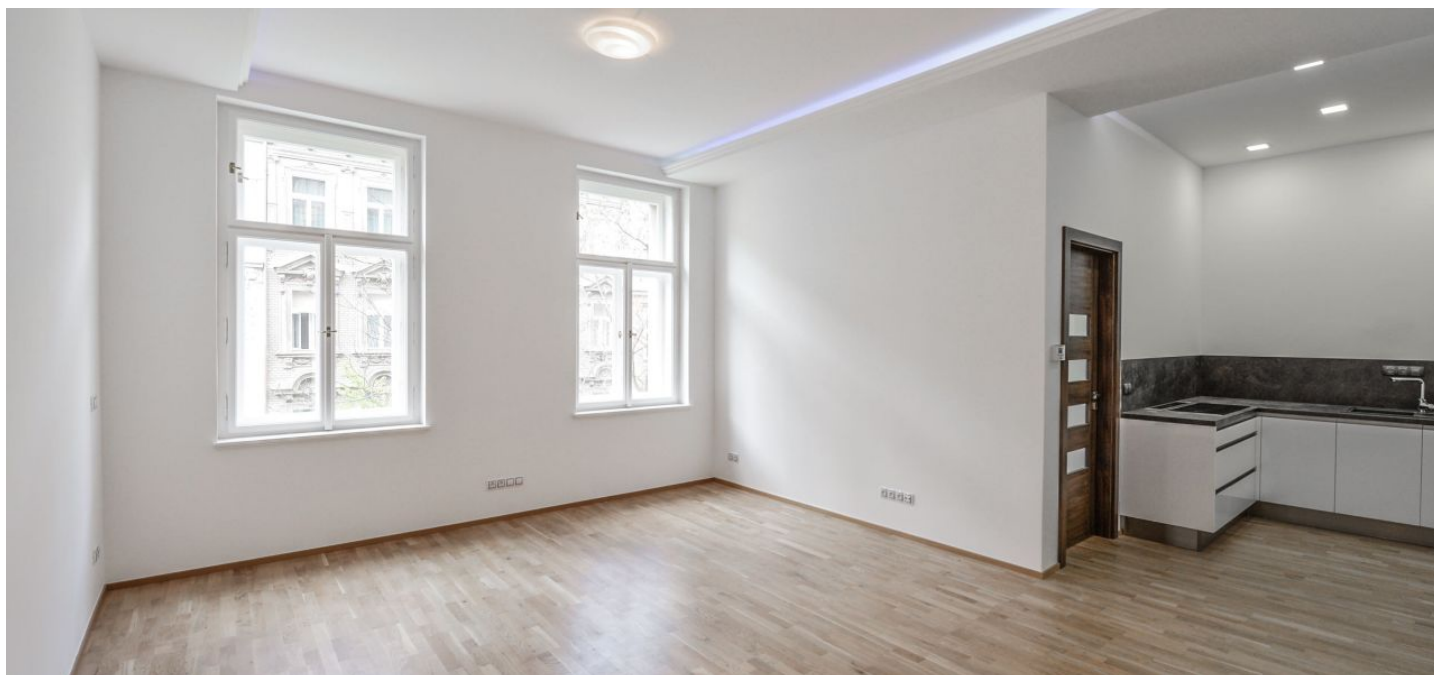




Apartment Two-bedroom (3+kk)

Rented

75 m², Praha 2, Vinohrady, Šumavská





Apartment Two-bedroom (3+kk)

Rented

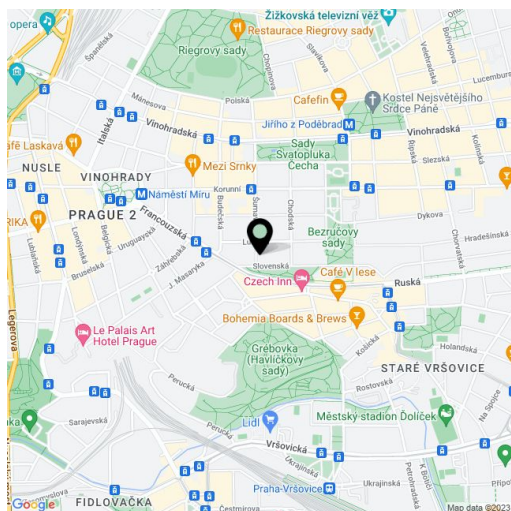
75 m², Praha 2, Vinohrady, Šumavská

Total area	75 m ²
Parking	-
Cellar	Yes
PENB	G
Reference number	25864
Available from	Immediately

Completely newly refurbished 2-bedroom flat on the second floor of a renovated traditional building with lift and preserved original details. Located in the popular residential neighborhood of Vinohrady with lots of restaurants, bars, cafes, shopping and entertainment opportunities. Quick connection to the city center, just a short walk or one tram stop to Náměstí Míru metro station, and the Bezručovy and Havlíčkovy sady parks.

The flat includes a fully fitted walk-through kitchen, a comfortable living room, two bedrooms, bathroom with bathtub, a separate toilet, utility room, and entrance hall.

Wooden floors, tiles, large windows, curtains, washing machine, dryer, dishwasher, video entry phone, cellar, balconies in the mezzanines of the building. Deposit for common building charges and water around CZK 1600 per month. Gas and electricity are billed separately.



* Area of the unit according to the Civil Code. The area consists of the sum total area of the entire unit bounded by perimeter walls.