



## Office space

€ 15.09 / m<sup>2</sup> | CZK 380 / m<sup>2</sup>

Prague 2, Nové Město, Na Moráni



**Office space**

Prague 2, Nové Město, Na Moráni

**€ 15.09 / m<sup>2</sup> | CZK 380 / m<sup>2</sup>**

<b>Service price</b>	110 CZK monthly per m <sup>2</sup>
<b>Available area</b>	204 m <sup>2</sup>
<b>Cellar</b>	-
<b>Parking</b>	Yes
<b>PENB</b>	G
<b>Reference number</b>	25885

Office space for lease on the 4th floor of a building located in Prague 2 - Nové Město. It consists of 8 office spaces and 2 balconies with a view of the Vltava River, kitchenette and sanitary facilities. Parking is possible in the vicinity of the building. The owner offers free furniture rental for about half of the rented space.

**Location:**

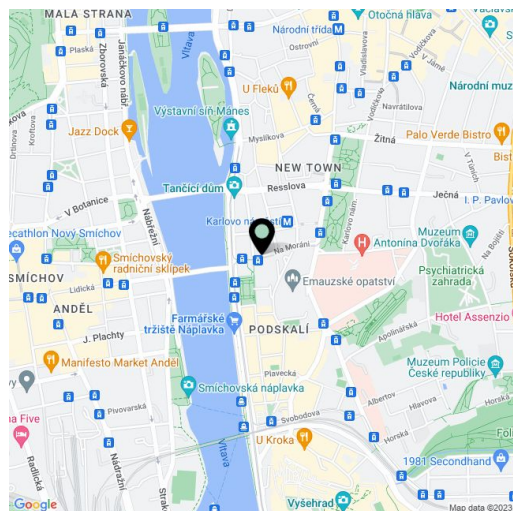
The building is situated in the city center, close to Palackého square and on the bank of the Vltava River. Very good accessibility by car and public transport – in close vicinity of Karlovo náměstí metro station (line B) and tram stops. All amenities available nearby.

**Features and Services:**

- Optical cables
- Openable windows
- Oak parquet
- Kitchenette and sanitary facilities included in the premises
- Access cards
- Elevator
- Parking
- Security entrance door
- Central security
- CCTV system
- Air Conditioning
- 2 balconies

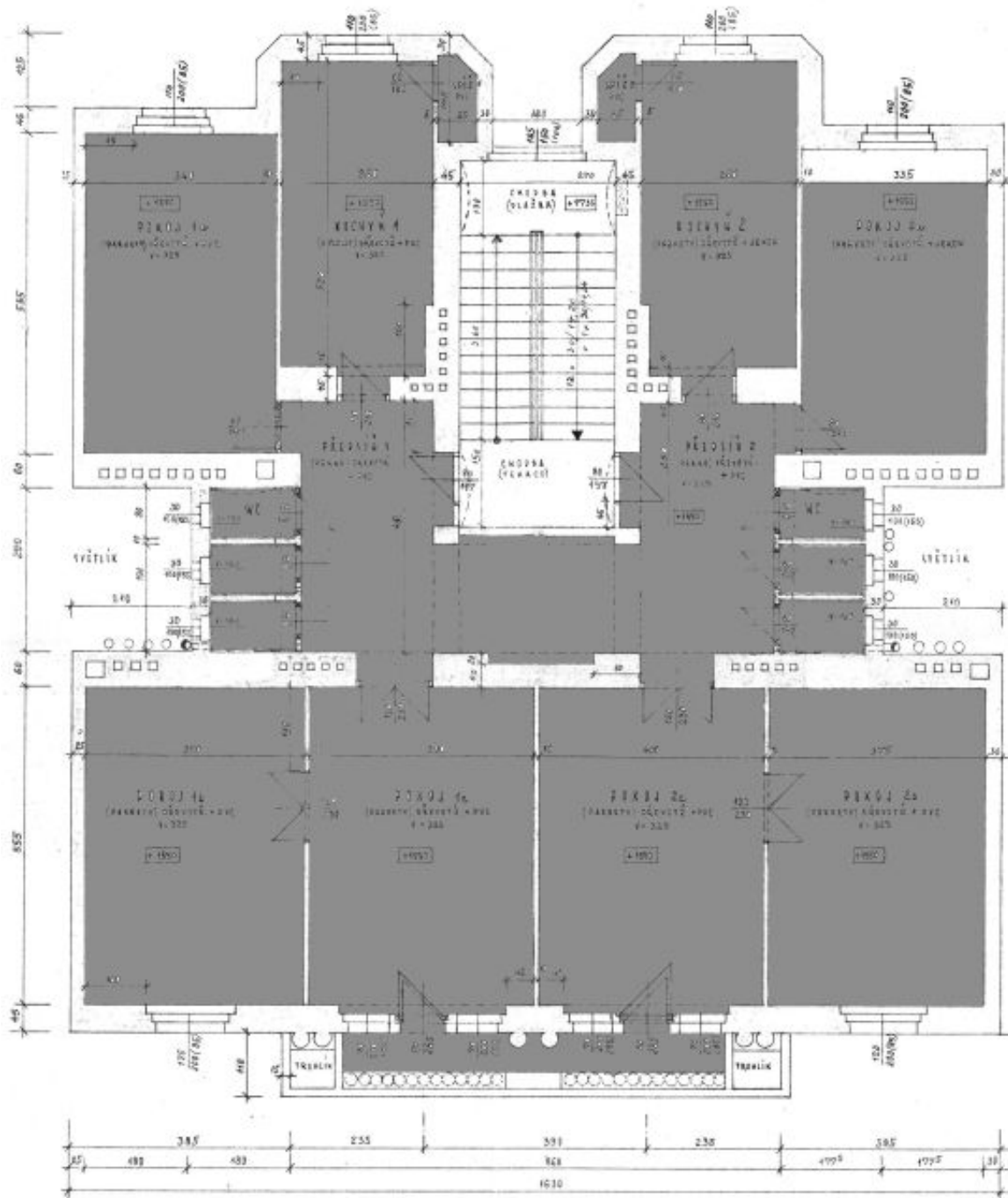
**Under offer.**

Rental and service charges listed without VAT. Lessee pays no commission.





PŮPORYS - IV. PATRO





PŮPORYS - IV. PATRO

