



Apartment One-bedroom (2+kk)

Sold

67.9 m², Prague 6, Dejvice, Wuchterlova





Apartment One-bedroom (2+kk)

Sold67.9 m², Prague 6, Dejvice, Wuchterlova

Total area	68 m ²
Parking	-
Cellar	-
PENB	G
Reference number	25911

This one-bedroom split-level apartment is situated on the 5th floor of a well maintained residential building without an elevator, located in a popular residential area just a few minutes' walk from the Prague Castle, a metro station, and tram stops with quick connections to the city center and to the airport.

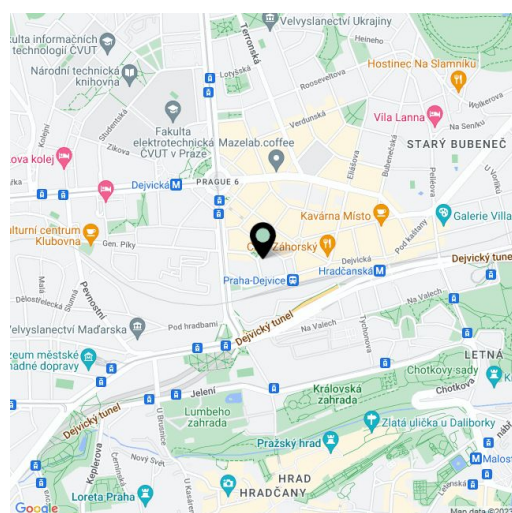
The lower level consists of a **40-meter living room** with a kitchen and dining area, a foyer, a separate toilet, and a closet. From the living area, a staircase leads to the upper level, where you will find a bedroom with an en-suite bathroom.

The apartment **has just been completed** and boasts new floating floors, plaster walls, sanitary ware, and a kitchen unit. There are also new wooden skylights. Heating is by a Vaillant gas boiler. The corner building is nicely maintained, and while there is no elevator, plans for its installation have been drawn up.

The building is located in a **popular residential area** with many well-liked restaurants and cafes, a university campus, and quick connections to the city center from the nearby Dejvická and Hradčanská metro stations and tram stops. The **Prague Castle** is a 15-minute walk away, and there are several **parks** nearby. A popular **farmers' market** is regularly held on Vítězné Square.

Interior 67.9 m².

In addition to regular property viewings, we also offer real-time video viewings via WhatsApp, FaceTime, Messenger, Skype, and other apps.



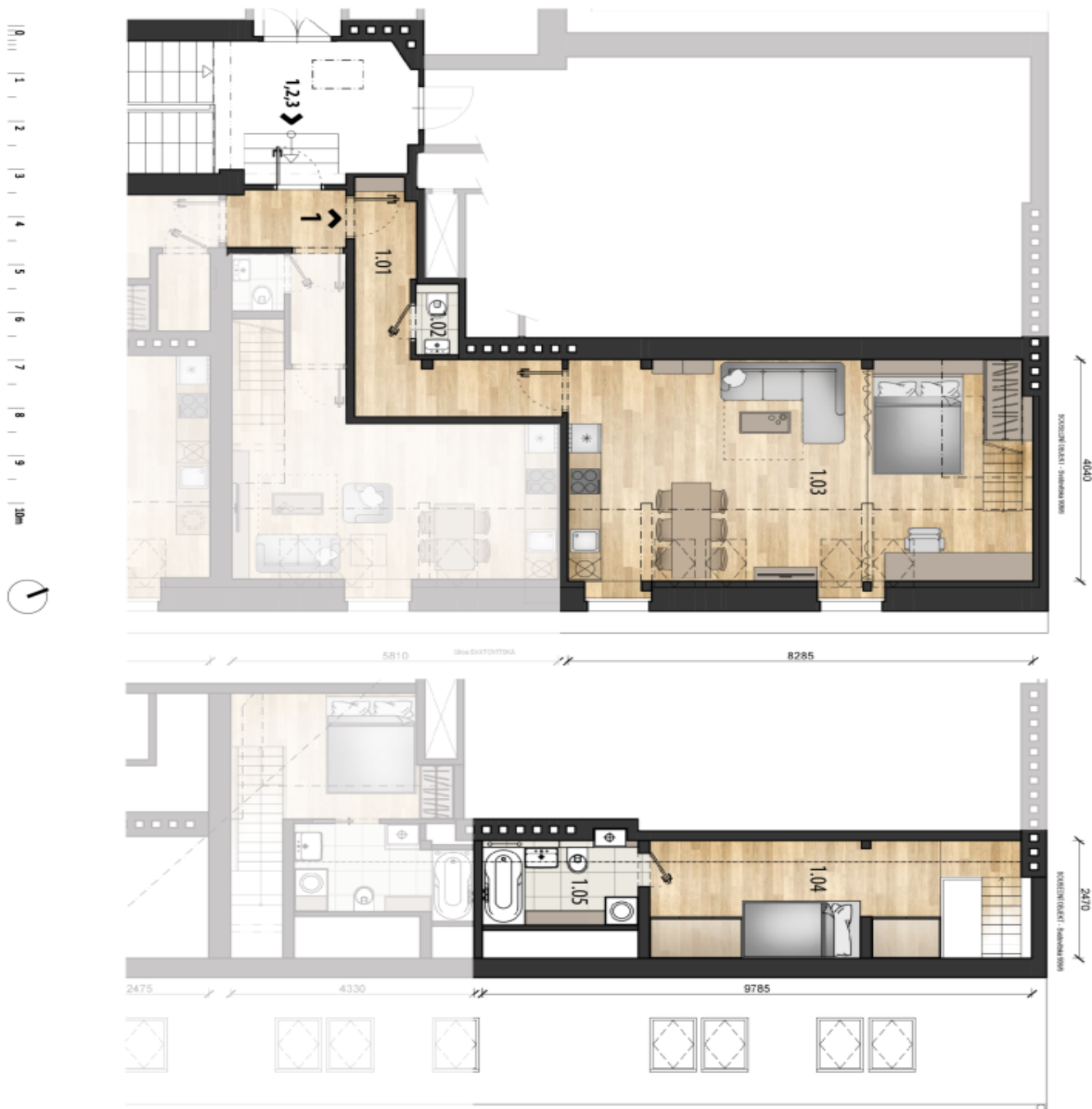
* Area of the unit according to the Civil Code. The area consists of the sum total area of the entire unit bounded by perimeter walls.



Apartment One-bedroom (2+kk)

Sold

67.9 m², Prague 6, Dejvice, Wuchterlova



! Prohlédnout photo je dle účelů zobrazení a žádnou právní sílu nemá. Prohlídka je pouze orientační a není závazná. Prohlídka není zárukou, že všechny údaje jsou správné a úplné. Prohlídka není zárukou, že všechny údaje jsou správné a úplné.

WUCHTERLOVA 11	
BYTOVÁ JEDNOTKA	
ČÍSLO BYTU	1
POULAZÍ	6. - 7.NP
DISPOZICE	1+KK
TABULKA MÍSTNOSTI	
1.01 CHODBA	8,7m ²
1.02 TOALENA	1,2m ²
1.03 OBÝVAČÍ POKOJ S KUCH. KOUPELN.	38,3m ²
1.04 SÁNIA	12,8m ²
1.05 KOUPELNA	5,6m ²
CELKOVÁ OBÝVAČÍ PLOCHA	66,6m ²
SPOLČNÁ CHODBA - POUL. 47%	1,3m ²
CELKOVÁ PODLAHOVÁ PLOCHA	67,9m ²