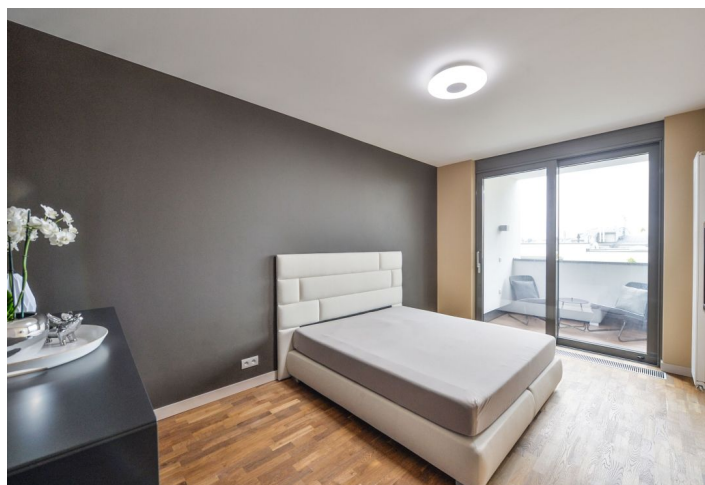




Apartment Two-bedroom (3+kk)

Rented

137 m², Praha 5, Smíchov, Zdikovská





Apartment Two-bedroom (3+kk)

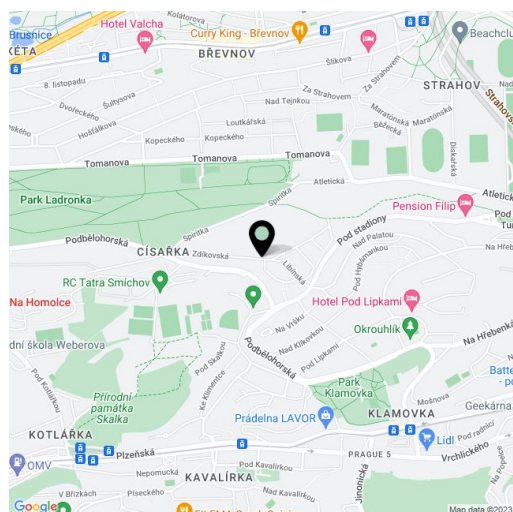
Rented137 m², Praha 5, Smíchov, Zdikovská

Total area	156 m ²
Floor area*	137 m ²
Terrace	19 m ²
Garden	30 m ²
Parking	One garage parking space for CZK 1000/month
Garage	Yes
Cellar	Yes
PENB	C
Reference number	25914
Available from	Immediately

Modern furnished 2-bedroom flat complete with a garden, terrace, an enclosed balcony and parking. Situated on the first floor of a gated residential project set in the southern slope beneath the Landronka Park, near the Motol metro station, about 15 min. from the city center by public transportation. Quiet and safe location with many opportunities for sports and relaxation (golf, inline track, tennis courts, fitness), good public amenities and excellent transportation links (10 min. to the Prague Ring road, 15-20 min. to the airport).

The interior features a spacious living room with a fully fitted open kitchen and access to a covered terrace and garden, two separate bedrooms with a shared enclosed balcony, a fitted walk-in closet, bathroom with bathtub and toilet, utility room, a guest toilet, and entrance hall.

Large windows, wooden floors, tiles, exotic wood on the terrace, aluminum windows, security entry door, gas boiler, washer, dryer, induction cooktop, dishwasher, microwave oven, TV, video entry phone, cellar. One garage parking space for CZK 1000/month. Deposit for common building charges and water around CZK 2000/month. Garden maintenance and common space charges CZK 1000/month. Gas and electricity will be transferred to the tenant's name. Interior 116.42 m², terrace 19.47 m², garden 30 m², enclosed balcony 4 m². Available from mid August 2019.



* Area of the unit according to the Civil Code. The area consists of the sum total area of the entire unit bounded by perimeter walls.