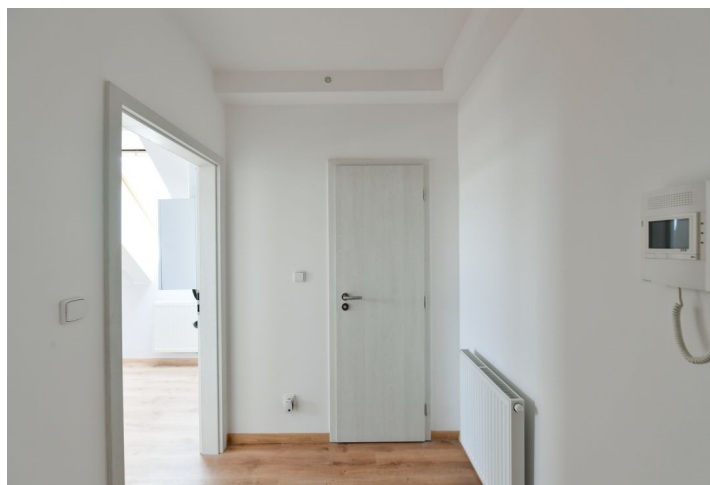




## Apartment Studio (1+kk)

36.2 m², Prague 6, Dejvice, Wuchterlova

**Sold**





## Apartment Studio (1+kk)

**Sold**

36.2 m², Prague 6, Dejvice, Wuchterlova

|                  |       |
|------------------|-------|
| Total area       | 36 m² |
| Parking          | -     |
| Cellar           | -     |
| PENB             | G     |
| Reference number | 25918 |

This studio apartment is situated on the 5th floor of a well maintained residential building without an elevator, located in a popular residential area just a few minutes' walk from the Prague Castle, a metro station, and tram stops with quick connections to the city center and to the airport.

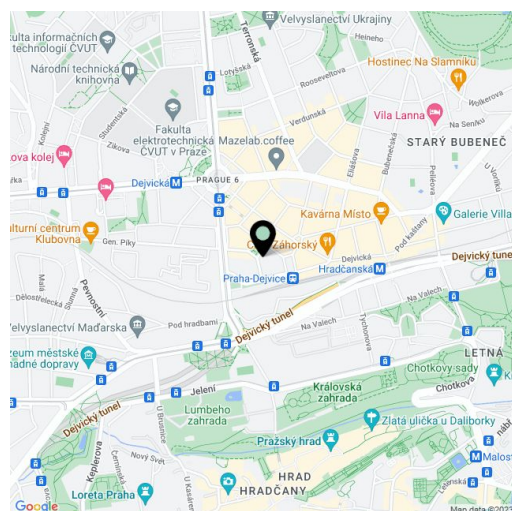
The interior consists of a living room with a kitchen and a sleeping area, a foyer, a closet, and a bathroom with a toilet and bathtub.

The apartment has just been completed and boasts new floating floors, plaster walls, sanitary ware, and a kitchen unit. There are also new wooden skylights. Heating is by a Vaillant gas boiler. The corner building is nicely maintained, and while there is no elevator, plans for its installation have been drawn up.

The building is located in a **popular residential area** with frequented restaurants and cafes, a university campus, and quick connections to the city center from the nearby Dejvická and Hradčanská metro stations and tram stops. The **Prague Castle** is a 15-minute walk away, and there are several **parks** nearby. A popular **farmers' market** is regularly held on Vítězné Square.

Interior 36.2 m².

In addition to regular property viewings, we also offer real-time video viewings via WhatsApp, FaceTime, Messenger, Skype, and other apps.



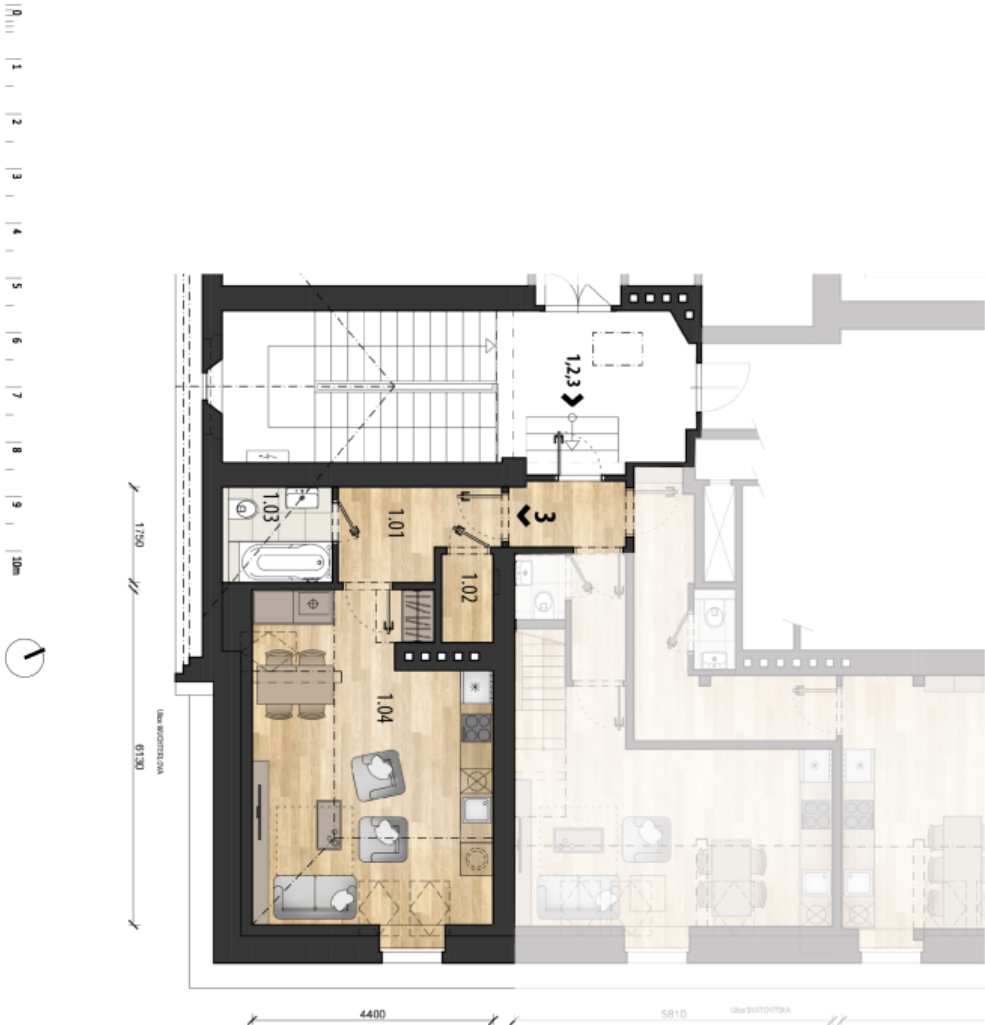
\* Area of the unit according to the Civil Code. The area consists of the sum total area of the entire unit bounded by perimeter walls.



# Apartment Studio (1+kk)

36.2 m², Prague 6, Dejvice, Wuchterlova

Sold



**i** "Technická příloha je dle přílohy 2 a 3 k výstavbě, obsahuje všechny potřebné údaje a informace, které jsou nezbytné pro realizaci projektu a jeho následnou údržbu a provoz."

**WUCHTERLOVA 11**  
BYTOVÁ JEDNOTKA

ČÍSLO BYTU  
PODLAŽÍ  
DISPOZICE

3  
6.NP  
1+KK

| TABULKA MÍSTNOSTI                  |         |
|------------------------------------|---------|
| 1.01 CHODBA                        | 4,7 m²  |
| 1.02 SÁLNA                         | 1,8 m²  |
| 1.03 KÚPELNA                       | 3,7 m²  |
| 1.04 OBYVACÍ PRÁKOU S KUCH. KOTLEN | 25,4 m² |
| CELKOVÁ OBÍTNÁ PLOCHA              | 35,6 m² |
| SPOLÉČNÁ CHODBA - PODIL 25%        | 0,6 m²  |
| CELKOVÁ PODLAHOVÁ PLOCHA           | 36,2 m² |