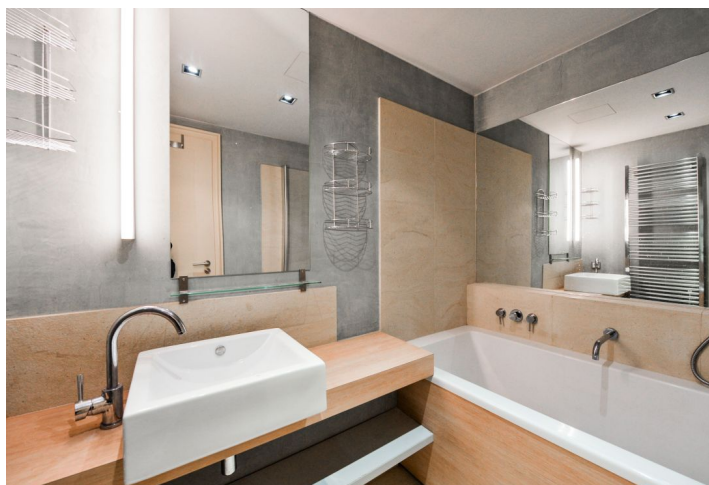
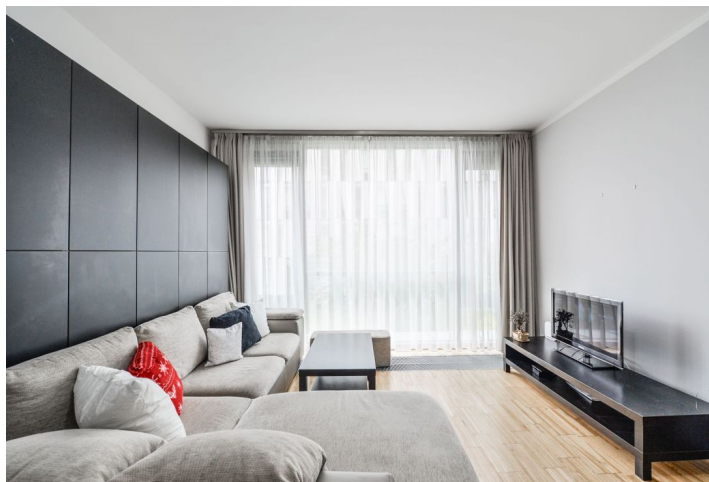




Apartment One-bedroom (2+kk)

Rented

65 m², Prague 8, Karlín, Rohanské nábřeží





Apartment One-bedroom (2+kk)

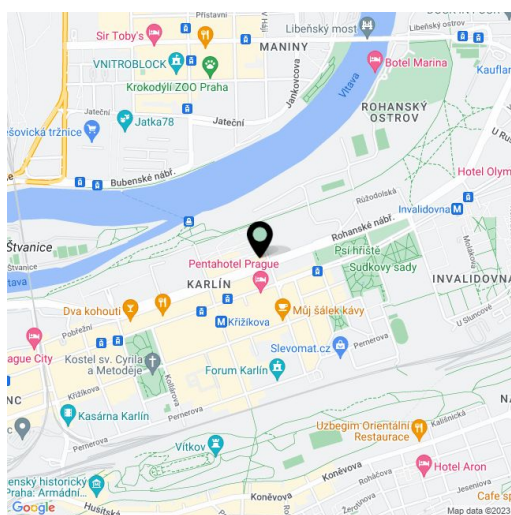
Rented65 m², Prague 8, Karlín, Rohanské nábřeží

Total area	65 m ²
Parking	Garage parking.
Garage	Yes
Cellar	-
PENB	G
Reference number	25939
Available from	Immediately

Modern furnished 1-bedroom flat on the first floor with lift in the River Diamond residential project with a 24-hour reception, security and underground parking. Located on the Prague 1 - Prague 8 border, in one of the most dynamically developing districts, just a short walk to the city center and a few minutes to Křižíkova metro station with full amenities in the area.

The interior includes living room with a fully fitted open kitchen and floor-to-ceiling windows with green views, one bedroom, bathroom with bathtub, a separate toilet, pantry / utility room, and an open entry hall.

Hardwood floors, central heating, automatic outdoor blinds, washing machine, dishwasher, microwave oven, TV. One garage space included, one more available at CZK 2500/month. Building amenities include an inner patio with a Japanese style garden, on-site property management and maintenance. Common building charges, heating and water CZK 5,800/month. Electricity and gas are billed separately.



* Area of the unit according to the Civil Code. The area consists of the sum total area of the entire unit bounded by perimeter walls.