



House Eight-bedroom (9+1)

Ask for price

530 m², Praha-západ, Jesenice, Sněženková





House Eight-bedroom (9+1)

[Ask for price](#)530 m², Praha-západ, Jesenice, Sněženková

| | |
|------------------|------------------------------------|
| Plot | 6 163 m ² |
| Foot print | 443 m ² |
| Garden | 5 720 m ² |
| Parking | Two garages, 2 x 50 m ² |
| Garage | Yes |
| Cellar | Yes |
| PENB | G |
| Reference number | 25977 |

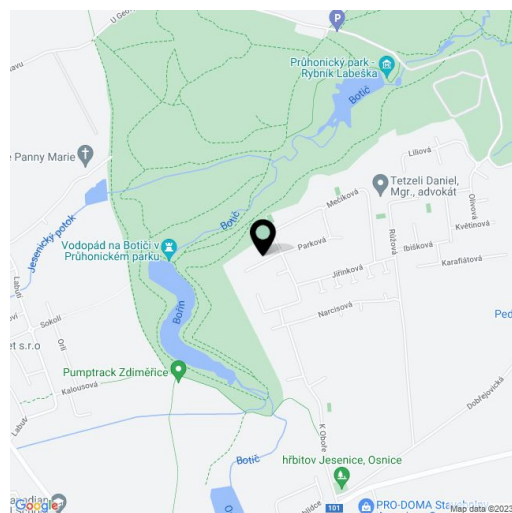
This spacious villa with pleasantly large rooms is tastefully set in a large well-kept garden with grown bushes, trees and a small pond which is beautified by colourful Koi carps. The house and garden provide a sense of calm and complete privacy that you can enjoy also in the adjacent pleasant woods of the Průhonice Park, accessible directly from the garden. Silence is interrupted only by bird songs and soothing forest sounds. The family home, which can be used for multigenerational living, has a swimming pool, a separate guest house and a courtyard with a garage entrance.

On the ground floor the airy generous interior with large French windows offers a spacious entrance hall with a dignified staircase followed by a living room connected to a kitchen with a dining area. Furthermore there is a lounge with a library and a fireplace, study, fitness room with a shower and a sauna, bathroom, separate toilet and garage access. The upper floor includes a spacious gallery and a total of 4 bedrooms: **2 bedrooms with a shared bathroom and balcony, a bedroom with an en-suite bathroom and a kitchenette** that can be used as a separate apartment, and a **master bedroom with bathroom, toilet corner and walk-in closet**. All the bathrooms on the upper floor have a bathtub and a shower. In the basement there is a technical background, workshop and laundry. Next to the house there is a **guest house with its own facilities, a garage for 4 to 6 cars** and one covered parking space.

Features include wooden floating floors, oak entrance door, wooden windows and interior doors, **sauna, fitness, fireplace**, floor heating, fully equipped kitchen unit, satellite TV and security system with alarm, furniture can also be left. The irrigable garden features a **large pool** with a sliding cover, **pond** with Koi carp, **gazebo** with barbecue and two **fireplaces**. A well is located on the plot.

Located at the edge of the quiet residential area of **Osnice**. Thanks to the private entrance to the adjacent **Průhonice Park** with a renowned collection of rare trees and rhododendrons, you can reach the Průhonice **waterfalls and views over the Bořín pond** in just a few minutes. There is also a **cycling track** near the house. The location offers excellent transport accessibility thanks to an easy **connection to the Prague Circle or the D1 motorway**. There is a kindergarten, playgrounds, an outdoor gym, an equestrian club and a restaurant. Other amenities available within a few minutes' drive in neighboring **Pruhonice or nearby Kunratice**. The prestigious **Sunny Canadian International School** is a 7-minute drive, the center of Prague can be reached in 25 minutes.

Interior 530 m², garden 5720 m², cellar 108m², total usable area 738 m².

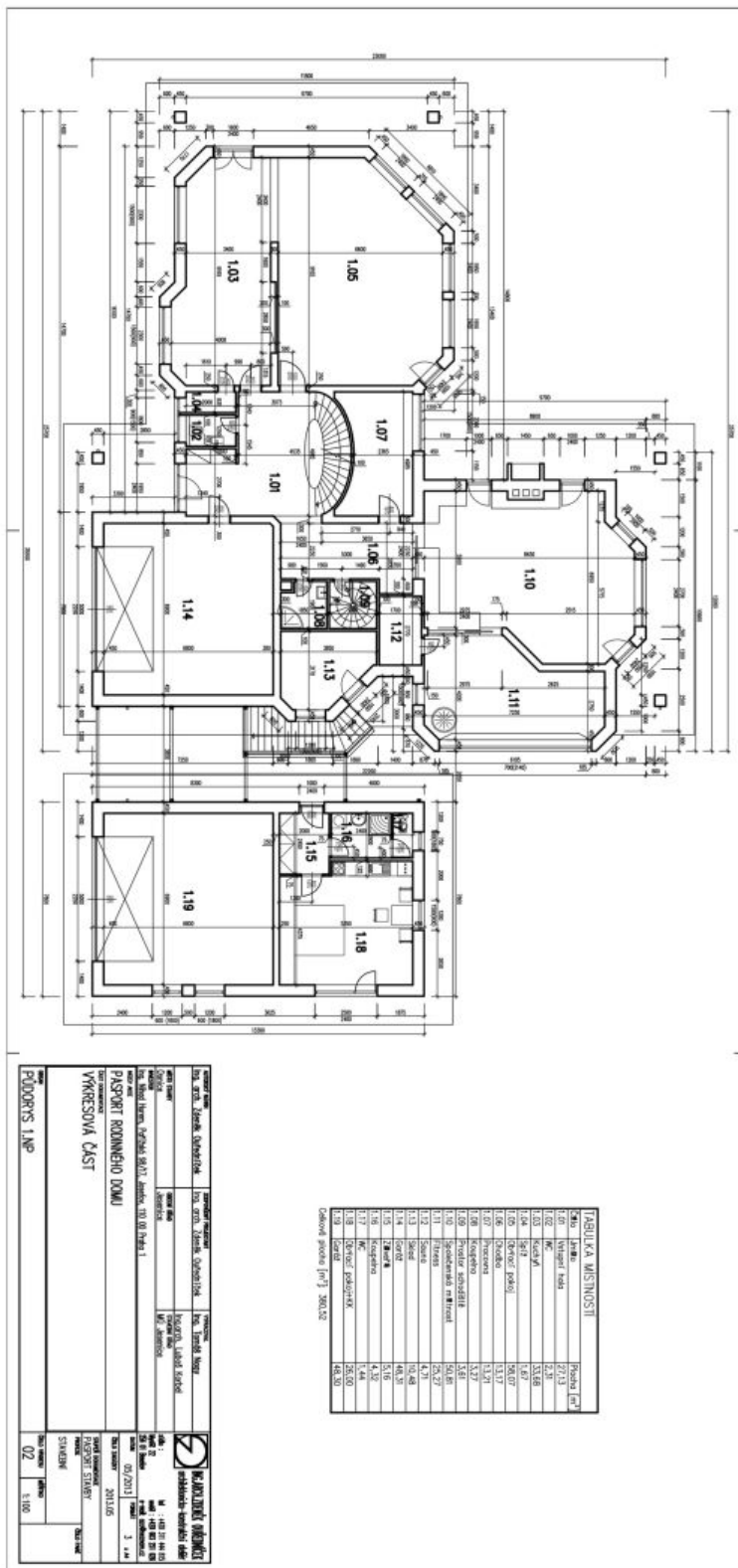




House Eight-bedroom (9+1)

530 m², Praha-západ, Jesenice, Sněženková

Ask for price

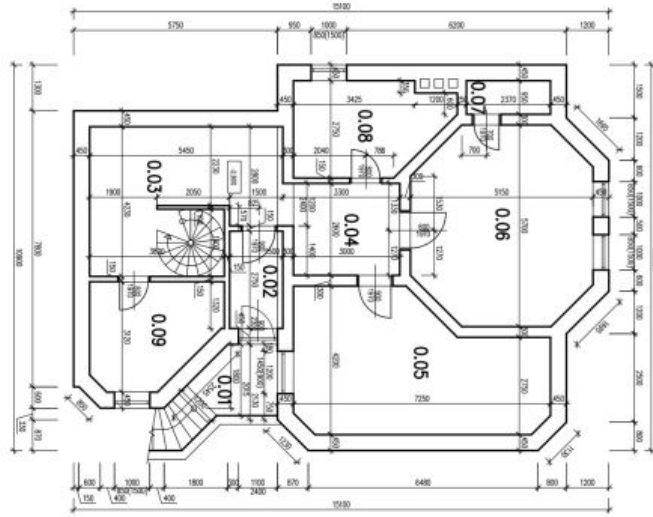




House Eight-bedroom (9+1)

530 m², Praha-západ, Jesenice, Sněžňenková

Ask for price



| Číslo | Název místnosti | Plocha [m ²] |
|-------|---------------------|--------------------------|
| 0.01 | Zobčívacia | 4,51 |
| 0.02 | Kuchyňa | 4,41 |
| 0.03 | Obývačka | 16,81 |
| 0.04 | Obývačka | 8,16 |
| 0.05 | Obývačka/Sklad | 23,27 |
| 0.06 | Pracovňa | 23,94 |
| 0.07 | Spalňa | 2,25 |
| 0.08 | Technická miestnosť | 10,68 |
| 0.09 | Práčovňa | 9,96 |

Celková plocha [m²] 107,89

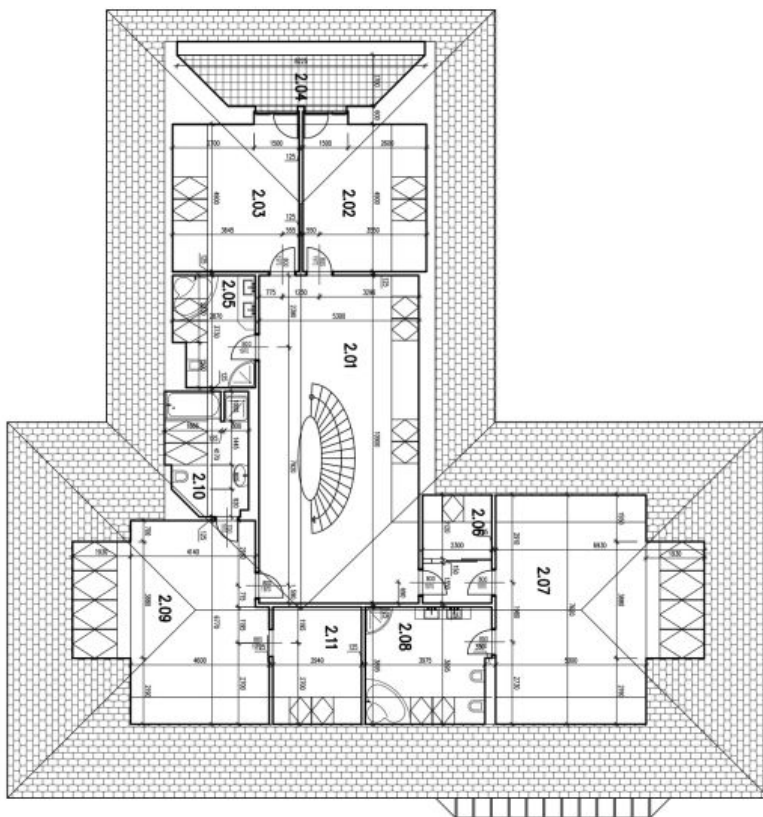
| | | |
|---|--|--------------------------------|
| Adresný názov Ing. arch. Zdeněk Outřetický | Staviteľ Ing. arch. Zdeněk Outřetický | Výstavca Ing. Tomáš Mlýnský |
| Miesto stavby Okres Praha | Stavba Jesenice | Ing. arch. Luboš Kopecký |
| Název objektu PASPORŤ ROZINNÉHO DOMU | Práca VÝKRESOVÁ ČASŤ | Objekt PŮDORYS 1.PP |
| Práca 2013.05 | Práca 2013.05 | Práca 2013.05 |
| Práca 2013.05 | Práca 2013.05 | Práca 2013.05 |
| Práca 2013.05 | Práca 2013.05 | Práca 2013.05 |



House Eight-bedroom (9+1)

530 m², Praha-západ, Jesenice, Sněženková

Ask for price



| Číslo | Název místnosti | Plocha [m ²] |
|-------|--------------------|--------------------------|
| 2.01 | Hala se schodištěm | 57,70 |
| 2.02 | Lůžnice | 20,60 |
| 2.03 | Lůžnice | 21,10 |
| 2.04 | Koupelna | 11,60 |
| 2.05 | Koupelna | 9,60 |
| 2.06 | Vstup se zděnou | 6,30 |
| 2.07 | Lůžnice | 45,60 |
| 2.08 | Koupelna | 15,60 |
| 2.09 | Koupelna | 37,40 |
| 2.10 | Koupelna | 10,60 |
| 2.11 | Kuchyně | 11,50 |

Černá plocha [m²] : 248,60

| | | |
|--|---|---|
| PROJEKTANT Ing. arch. Zdeněk Opravilík | PROJEKTANT ZPRAVY Ing. arch. Zdeněk Opravilík | PROJEKTANT Ing. Tomáš Mlýnský |
| OBJEKT Nová stavba | MÍSTO OBJEKTU Jesenice | PROJEKTANT MÚ. Jesenice |
| OBJEKT Pásport rodinného domu | OBJEKT Vykreslovací část | PROJEKTANT STAVENÍ |
| OBJEKT Přístavba 2.NP | OBJEKT 03 | PROJEKTANT 1:100 |
| PROJEKTANT Ing. arch. Zdeněk Opravilík | PROJEKTANT ZPRAVY Ing. arch. Zdeněk Opravilík | PROJEKTANT Ing. Tomáš Mlýnský |
| OBJEKT Nová stavba | MÍSTO OBJEKTU Jesenice | PROJEKTANT MÚ. Jesenice |
| OBJEKT Pásport rodinného domu | OBJEKT Vykreslovací část | PROJEKTANT STAVENÍ |
| OBJEKT Přístavba 2.NP | OBJEKT 03 | PROJEKTANT 1:100 |