



House Four-bedroom (5+kk)

Rented

200 m², Praha 6, Dejvice, Na Bečvářce





House Four-bedroom (5+kk)

Rented

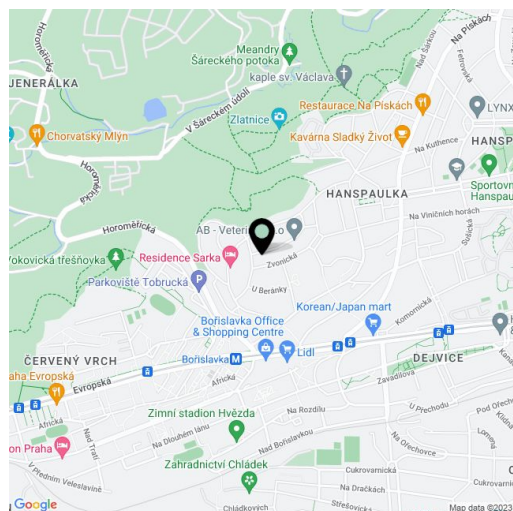
200 m², Praha 6, Dejvice, Na Bečvářce

Plot	600 m ²
Parking	Parking on the plot.
Cellar	Yes
PENB	G
Reference number	25986
Available from	Immediately

Boasting a prestigious location, this newly refurbished semidetached house with a back garden is situated in the prestigious Hanspaulka residential neighborhood. Quiet green location close to the Šárka-Lysolaje nature park with quick access to Bořislavka metro station, the city center and full amenities. Convenient to the airport and international schools.

Ground floor: living room with a fully fitted open kitchen and access to the terrace and garden, guest toilet, entry hall. Mezzanine floor: balcony accessible from the staircase, closet. First floor: master bedroom with dressing room and en-suite bathroom, two more bedrooms - one with a balcony, bathroom, utility / laundry room. Second floor: air-conditioned bedroom with terrace and bathroom, hall. Basement: storage room with a separate entrance, boiler room, windowed gym that can be used as a guest bedroom, storage.

Preserved original details, solid wood parquet floors, tiles, gas boiler, washer, dryer, dishwasher. Three parking spaces on the plot. Utilities are billed separately.

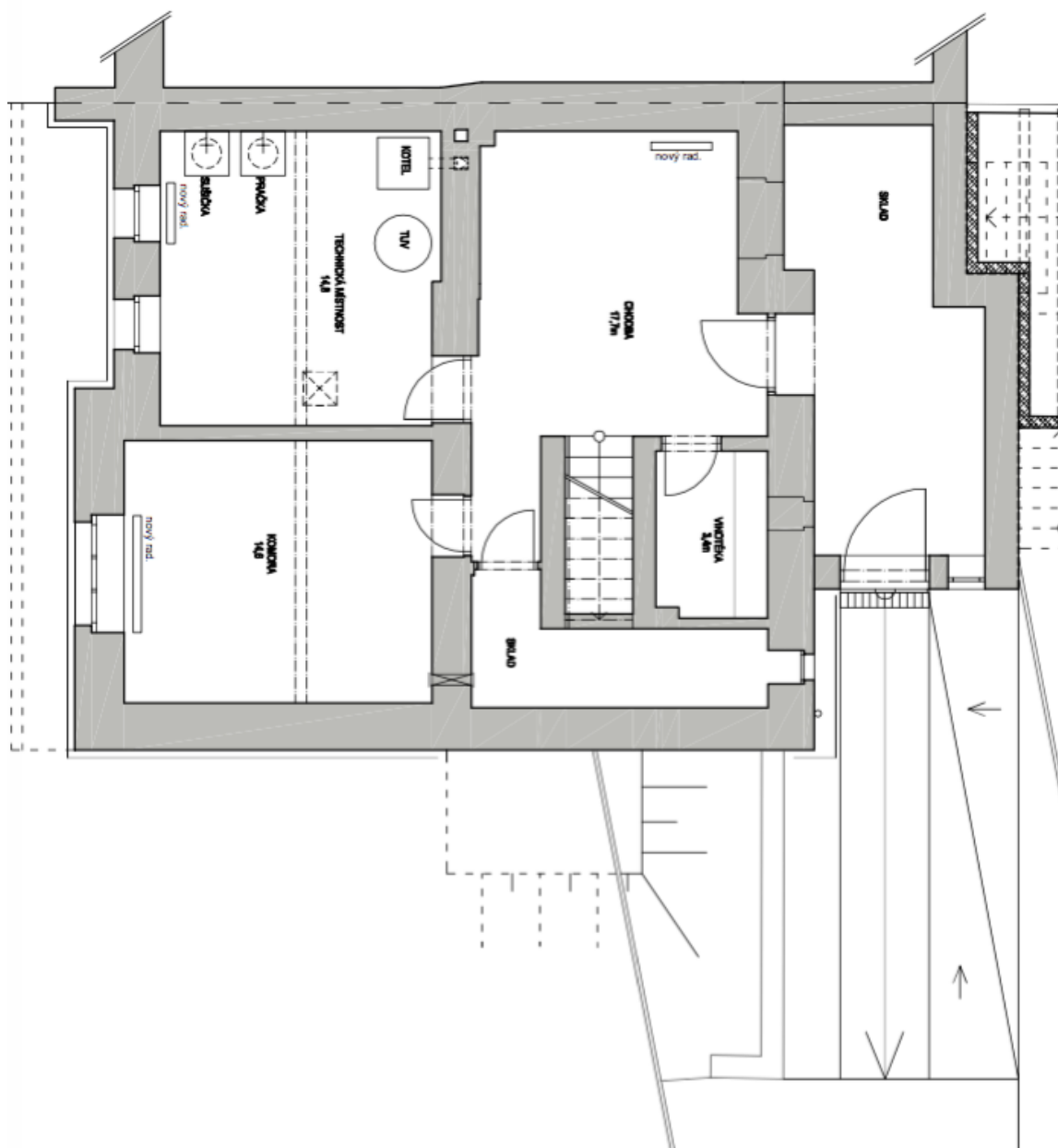




House Four-bedroom (5+kk)

Rented

200 m², Praha 6, Dejvice, Na Bečvářce

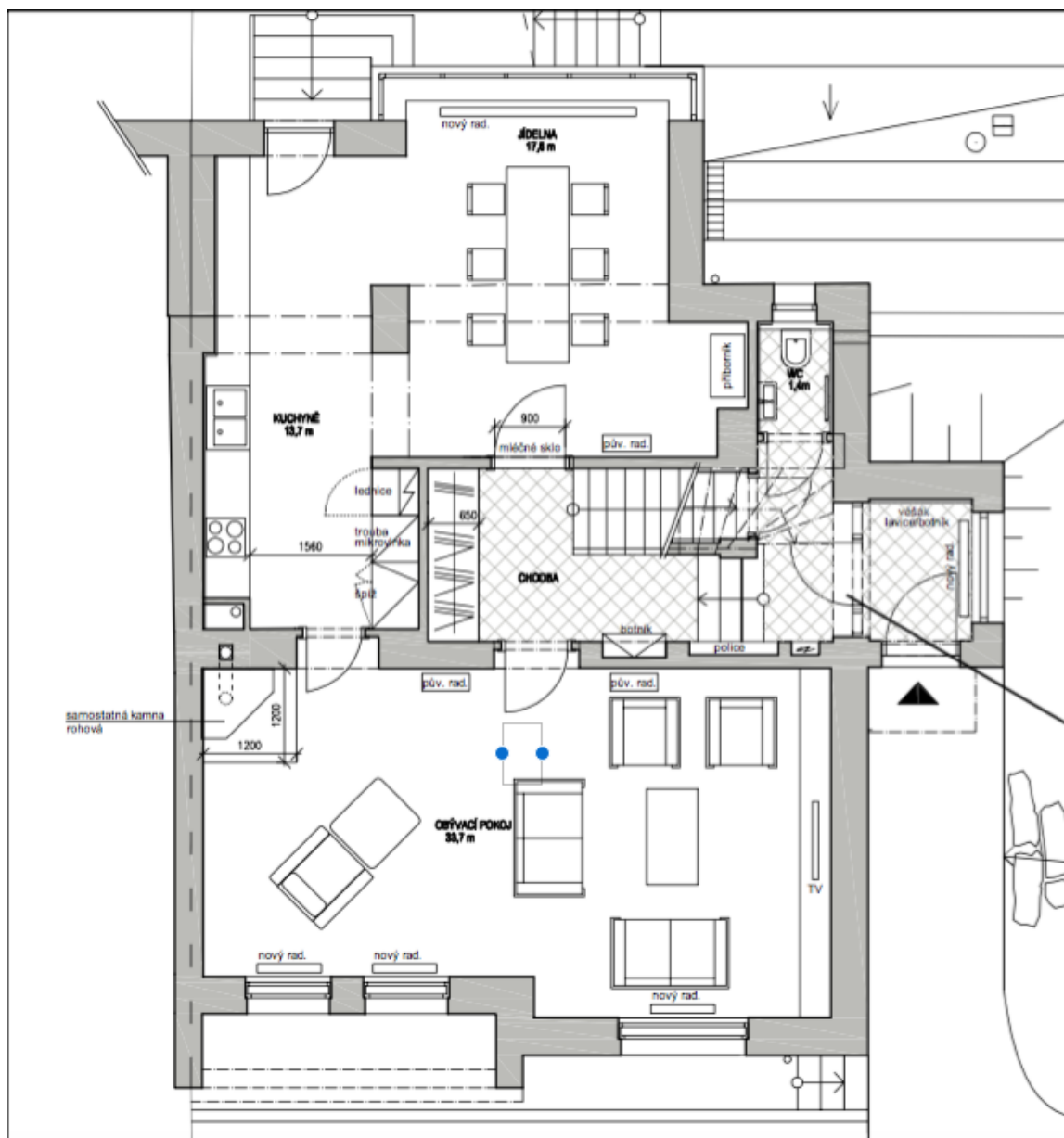




House Four-bedroom (5+kk)

Rented

200 m², Praha 6, Dejvice, Na Bečvářce

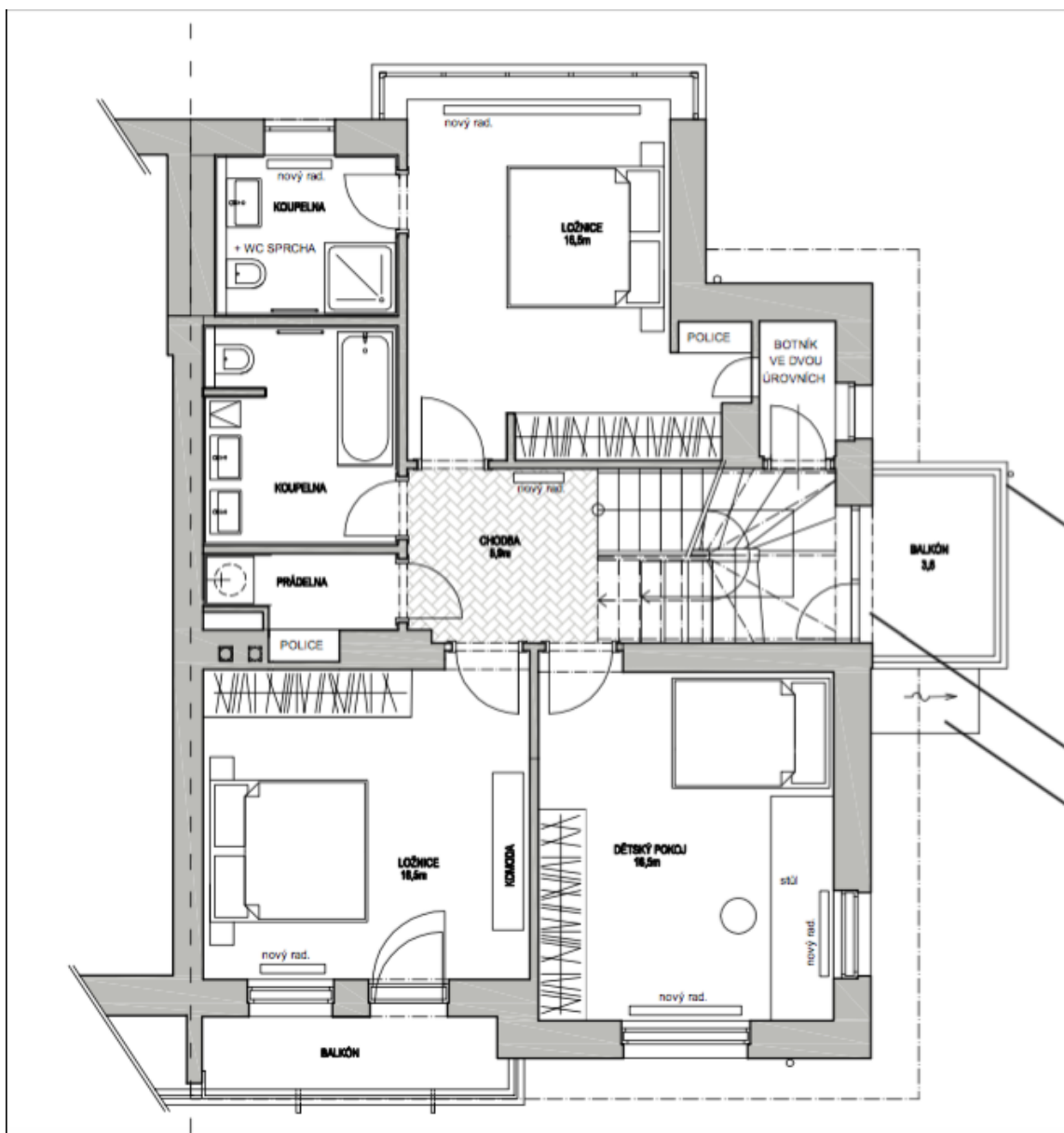




House Four-bedroom (5+kk)

Rented

200 m², Praha 6, Dejvice, Na Bečvářce





House Four-bedroom (5+kk)

Rented

200 m², Praha 6, Dejvice, Na Bečvářce

