



Apartment Three-bedroom (4+kk)

€ 756 574 | CZK 18 990 000

182 m², Prague 6, Veleslavín, Na Okraji





Apartment Three-bedroom (4+kk)

€ 756 574 | CZK 18 990 000

182 m², Prague 6, Veleslavín, Na Okraji

Total area	203 m ²
Floor area*	182 m ²
Balcony	20 m ²
Parking	1 garage parking space for an additional cost
Garage	Yes
Cellar	2 m ²
PENB	C
Reference number	26015

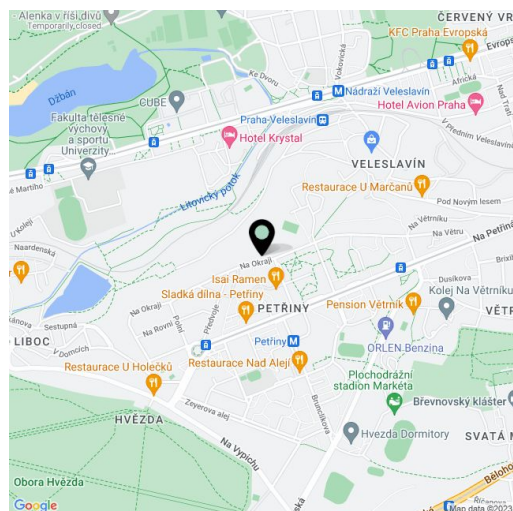
This spacious, bright 3-bedroom apartment with two balconies and green views is situated on the 1st floor of a residential building with an elevator and underground parking in a very quiet part of Prague Veleslavín, a few steps from the Petřiny metro station.

The layout of the apartment offers an entrance hall, a living room with a kitchen, dining area, and French windows leading to the balcony, an exceptionally spacious master bedroom with a second balcony, 2 children's bedrooms, a bathroom with a bathtub, shower, and toilet, a separate toilet, and a walk-in closet. The apartment mainly faces east, partly to the north and west, but thanks to the large windows, it is **pleasantly bright** and the rooms have an **airy feeling**.

Facilities include wooden floating floors, ceramic tiles, **wooden Euro windows**, a fully equipped kitchen, and brick partitions. Central heating. The purchase price includes a **cellar**. **Garage parking space available for purchase for an additional cost.**

The location is attractive for its excellent amenities (including the **prestigious ISP and Riverside international schools**), but also thanks to its good accessibility to the center and the airport. You can walk to Libocký Pond, to the natural pool by the Džbán water reservoir, and to the **Divoká Šárka nature reserve**. The Hvězda Enclosure with a summer chateau and Ladronka Park are also nearby.

Floor area 182.4 m², balconies 20.1 m², cellar 2.3 m².



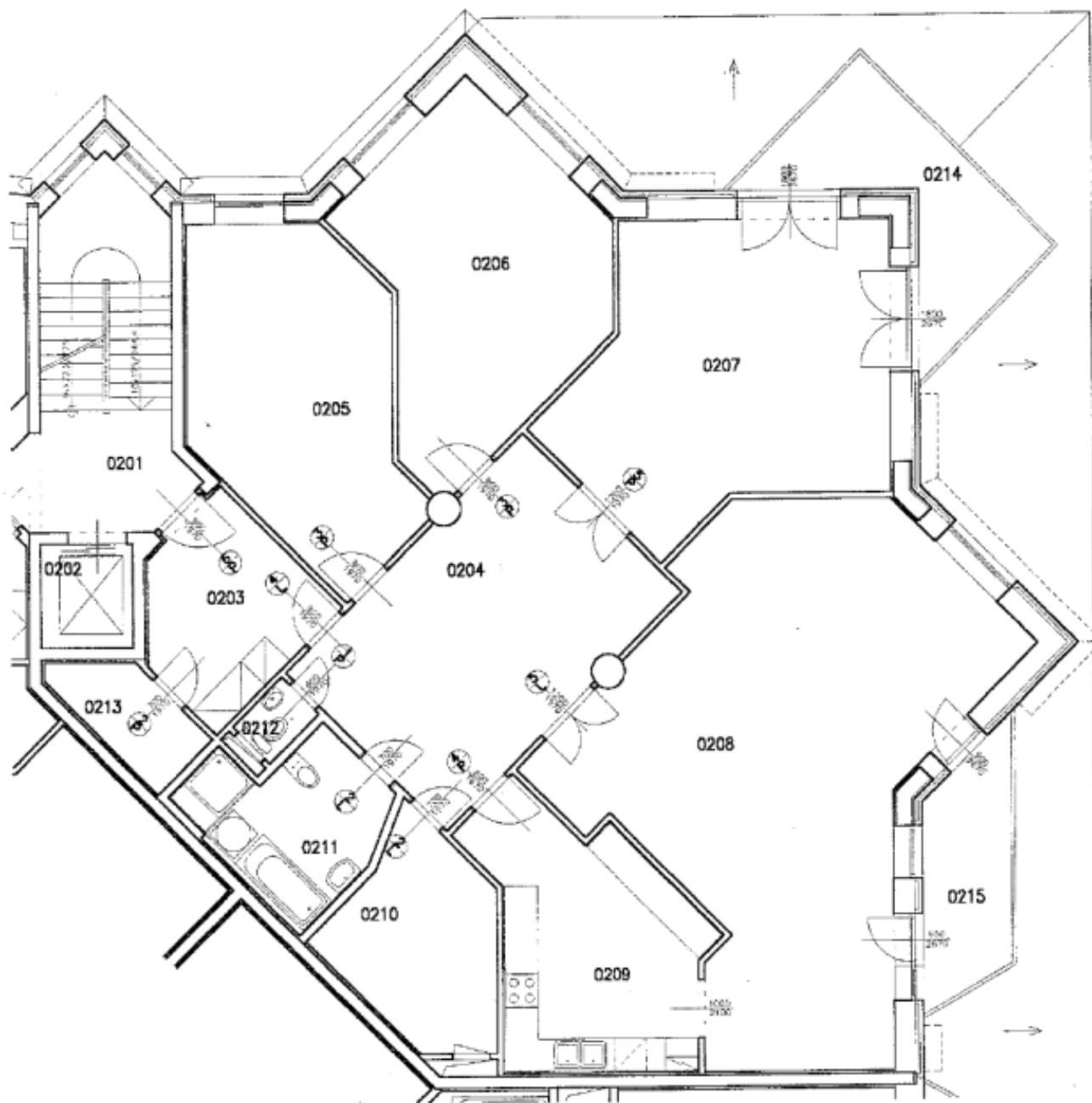
* Size of the unit according to the Housing Act.
The area consists of the sum total of the internal area of every room.



Apartment Three-bedroom (4+kk)

€ 756 574 | CZK 18 990 000

182 m², Prague 6, Veleslavín, Na Okraji



M 1:100