



## Apartment Two-bedroom (3+kk)

Sold

95 m<sup>2</sup>, Prague 2, Vinohrady, Slezská





## Apartment Two-bedroom (3+kk)

**Sold**95 m<sup>2</sup>, Prague 2, Vinohrady, Slezská

Total area	105 m <sup>2</sup>
Floor area*	95 m <sup>2</sup>
Terrace	10 m <sup>2</sup>
Parking	-
Cellar	-
Service price	4 182 CZK monthly
PENB	G
Reference number	26059

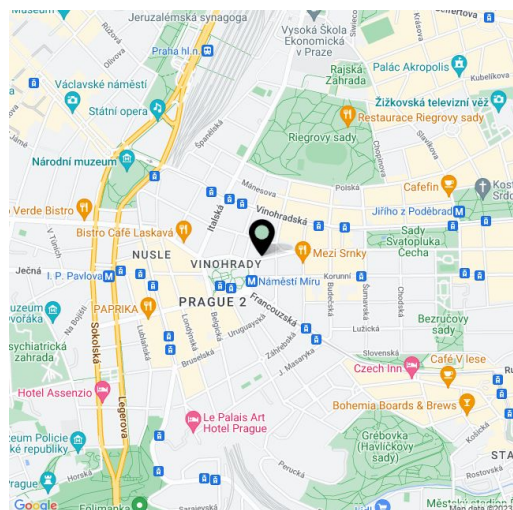
**Sunny split-level attic flat with a lovely terrace, located on the 6th floor of a well-kept apartment building with a lift, located in an attractive residential area within walking distance of a metro station and the Atrium Flora shopping and entertainment center.**

The entrance to the apartment is on the lower floor. Directly from the hall there is a staircase leading to the upper floor, which consists of a spacious living room with a kitchen, dining area and access to a **south-facing terrace**, 2 bedrooms, bathroom, and a separate toilet.

Wooden floating floors, ceramic tiles, plastic French windows and **Velux wooden skylights** with interior roller blinds, fully equipped modern kitchen, gas boiler.

**A popular residential location** with many popular restaurants, cafes, schools and other services, **within easy reach of the park and farm markets** at Jiřího z Poděbrad Square and Atrium Flora shopping mall with the IMAX cinema. Excellent connection to the city center thanks to the metro station and numerous tram lines.

Interior 95 m<sup>2</sup>, terrace 10 m<sup>2</sup>.



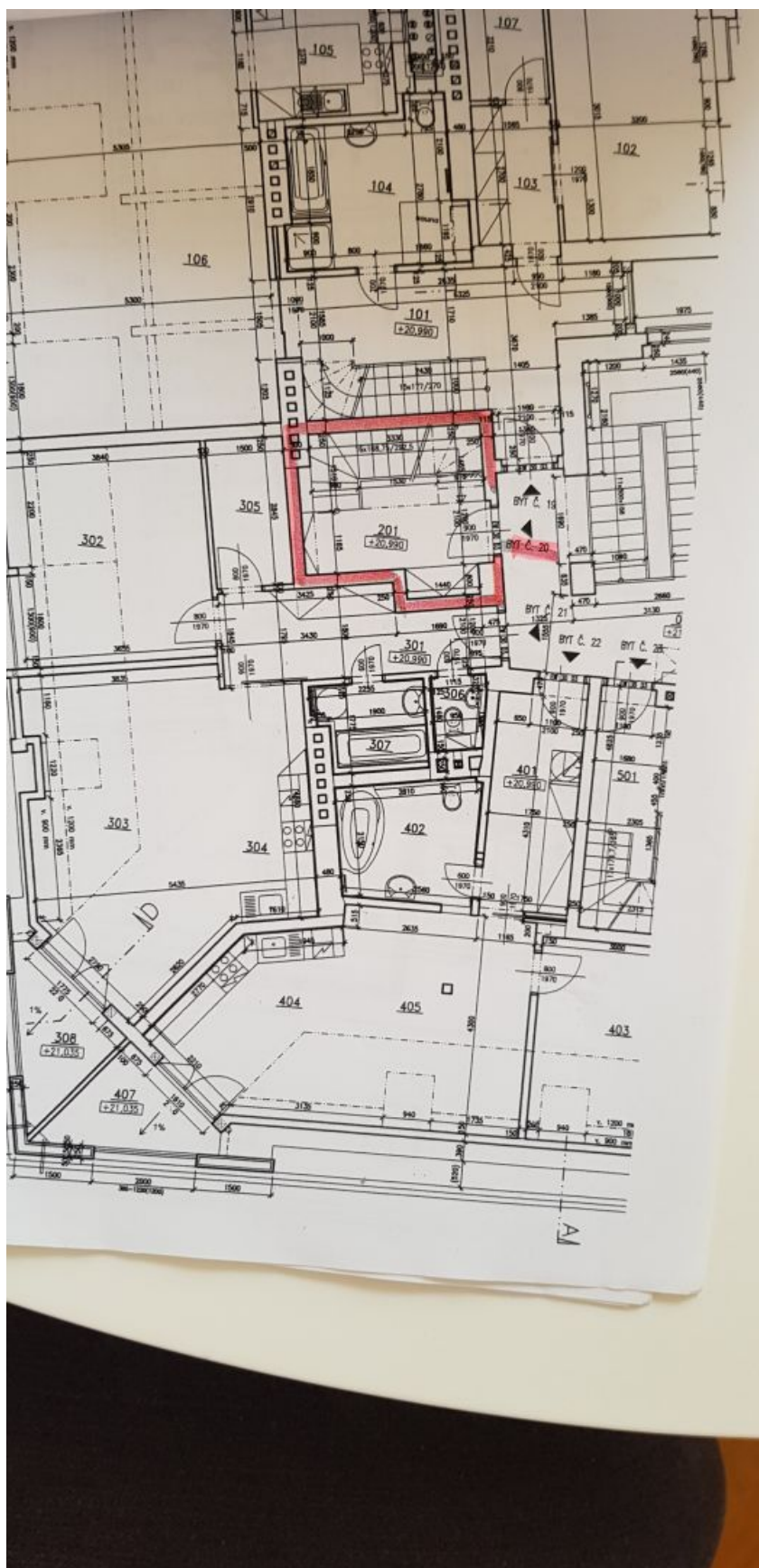
\* Area of the unit according to the Civil Code. The area consists of the sum total area of the entire unit bounded by perimeter walls.



## Apartment Two-bedroom (3+kk)

95 m<sup>2</sup>, Prague 2, Vinohrady, Slezská

Sold





## Apartment Two-bedroom (3+kk)

95 m<sup>2</sup>, Prague 2, Vinohrady, Slezská

Sold

