



Apartment Two-bedroom (3+kk)

Rented

55 m², Prague 5, Košíře, Průchova





Apartment Two-bedroom (3+kk)

Rented

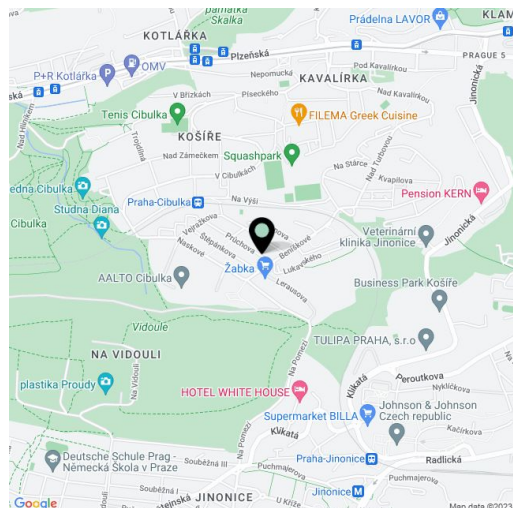
55 m², Prague 5, Košíře, Průchova

Total area	63 m ²
Floor area*	55 m ²
Terrace	8 m ²
Parking	Parking on the plot at CZK 1,000/month.
Garage	Yes
Cellar	Yes
PENB	C
Reference number	26152
Available from	Immediately

Reconstructed fully furnished 2-bedroom flat with an 8 m² terrace, on the second floor of a newly renovated corner townhouse, situated in a tranquil street in a green residential neighborhood near the Cibulka natural park. Quick access to Anděl metro station and commercial center. Tennis courts, jogging path, kindergarten and elementary school close by, convenient to the German School.

The interior includes living room with dining area and a fully fitted open kitchen, two bedrooms - one is walk-through, shower bathroom with toilet, and entry hall.

Laminated floating floors and tiles, security entry door, gas boiler, washer / dryer, dishwasher, microwave oven, dishes and kitchenware, bedding, towels, iron, vacuum cleaner, alarm, satellite reception, shared storage room in the building. The terrace is accessible from the corridor of the building on the first floor. One parking space on the plot at CZK 1,000/month, easy parking on the street. Common building charges and deposit for utilities CZK 4,500/2 persons/month incl. the Internet.



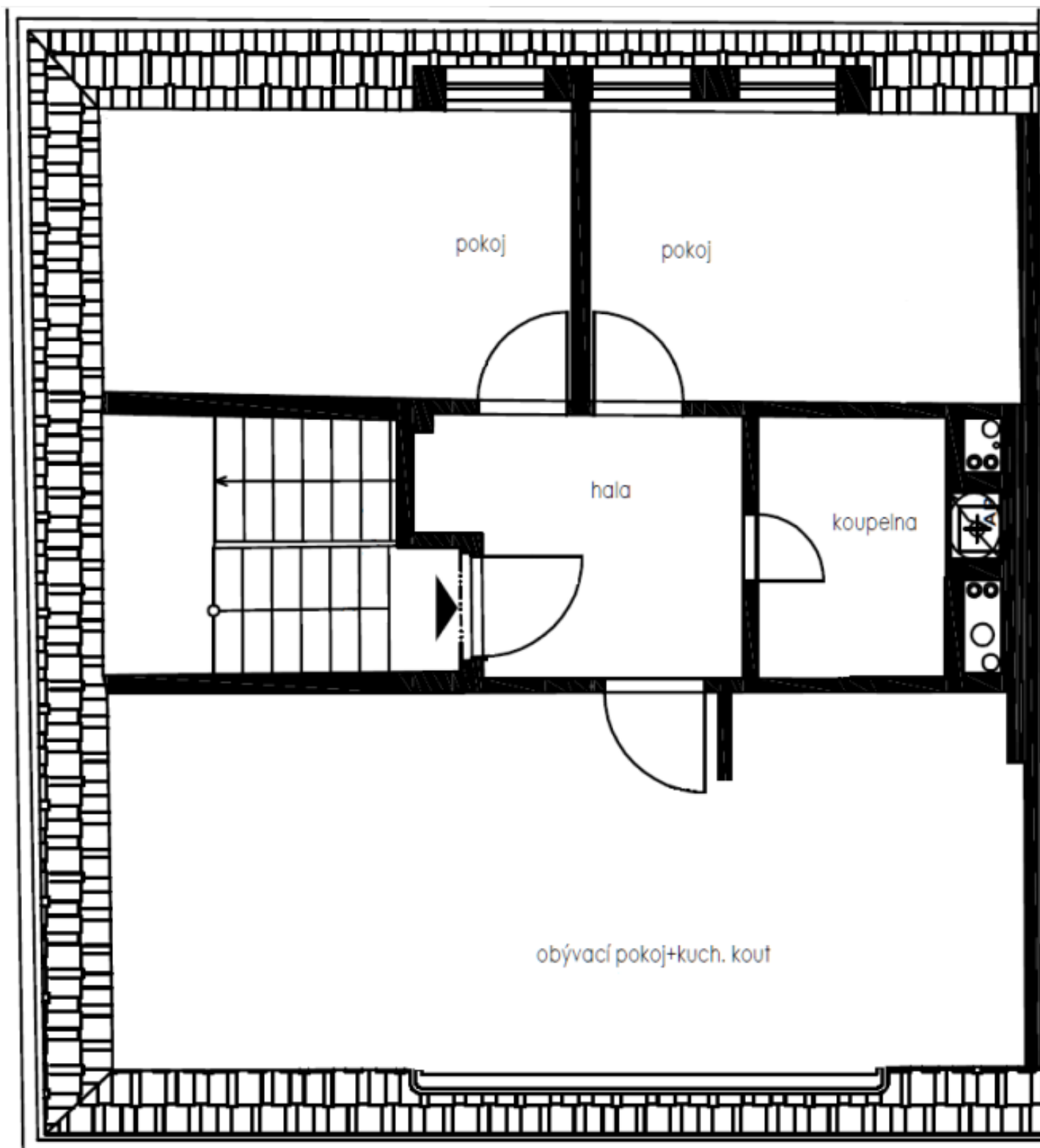
* Area of the unit according to the Civil Code. The area consists of the sum total area of the entire unit bounded by perimeter walls.



Apartment Two-bedroom (3+kk)

Rented

55 m², Prague 5, Košíře, Průchova





Apartment Two-bedroom (3+kk)

Rented

55 m², Prague 5, Košíře, Průchova

