



## Apartment Two-bedroom (3+kk)

Rented

86 m<sup>2</sup>, Praha 5, Smíchov, Pecháčkova





## Apartment Two-bedroom (3+kk)

Rented

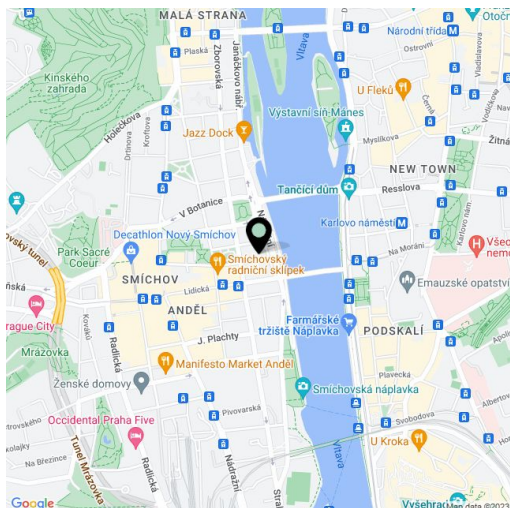
86 m<sup>2</sup>, Praha 5, Smíchov, Pecháčkova

Total area	94 m <sup>2</sup>
Floor area*	86 m <sup>2</sup>
Terrace	8 m <sup>2</sup>
Parking	Garage parking space for CZK 3.000/month.
Garage	Yes
Cellar	Yes
PENB	C
Reference number	26200
Available from	Immediately

Partly furnished 2-bedroom 2-bathroom split-level attic flat with a terrace, situated on the sixth floor with lift in an elegant building after a complete reconstruction, in which emphasis was placed on preserving original features. Located just a few steps from the Vltava riverbank, Kinského Gardens and the Nový Smíchov shopping center. The location offers full amenities, trams and Anděl metro station, line B within walking distance. Nearby you will find numerous cafes and restaurants, BestFit Studio Smíchov fitness center, and a park at 14. října square.

On the first level, the interior offers an entry hall, one bedroom, and bathroom with bathtub and toilet. The upper level includes an open plan living room with a fully fitted kitchen, dining area and access to the terrace, second bedroom and second bathroom with a walk-in shower and toilet.

Parquet floors, wooden staircase, security entry door, washing machine, dishwasher, outdoor blinds on the terrace, video entry phone, terrace furniture, cellar. One **garage parking** space to be rented for CZK 3.000/month. Deposit for common building charges, energies and internet connection CZK 4500 per month.



\* Area of the unit according to the Civil Code. The area consists of the sum total area of the entire unit bounded by perimeter walls.



# Apartment Two-bedroom (3+kk)

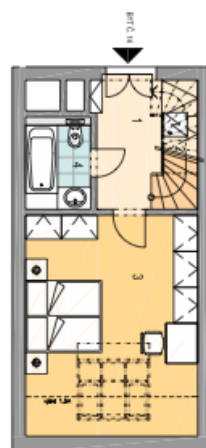
86 m<sup>2</sup>, Praha 5, Smíchov, Pecháčkova

Rented

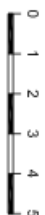
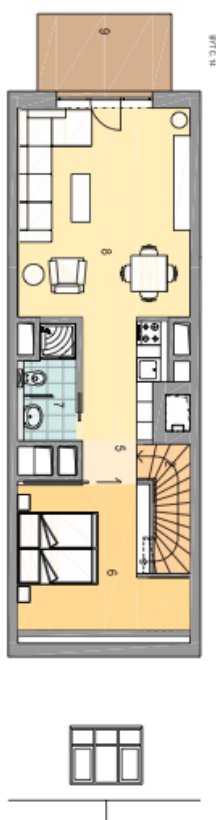
7.NP a 8.NP  
BYT Č. 14 / 3+KK  
80,17 m<sup>2</sup>

01	CHODBA	7,43
02	SCHODIŠTĚ	3,37
03	POKOU	19,50
04	KOUPELNA	3,41
05	CHODBA	7,19
06	PRACOVNA	13,32
07	KOUPELNA	3,49
08	OBÝV. POKOJ+KUCH.	22,46
09	CELKOVÁ PLOCHA BYTU	80,17
	TERASA	6,49

## DISPOZICE BYTU - 7.NP



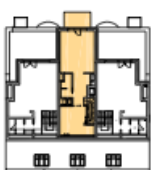
## - 8.NP



### POLOHA BYTU V DOMĚ



PŮDORYS 7.NP



PŮDORYS 8.NP

POHLED ULIČNÍ



POHLED DVORNÍ

