



Retail space

Prague 2, Vyšehrad, Svobodova

Rented

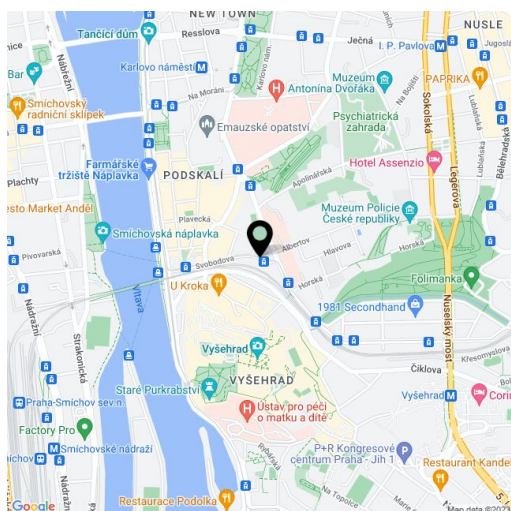
Service price	15 CZK monthly per m ²
Available area	173 m ²
Parking	-
PENB	G
Reference number	26206

Retail space for lease in the building situated in a popular part of Prague 2 – Vyšehrad, close to the Vltava River. Premises suitable for open space on the 1st floor of the building. Two entrances to the premises – from the hall of the building and also directly from the street. Available kitchenette and toilets, openable windows and parquet floors.

Location:

The building is located in close vicinity of Rašínovo nábřeží and Vyšehrad. Excellent accessibility by car and public transport – tram and bus stops nearby, Karlovo náměstí metro station (line B) approx. 10 minutes on foot. In close vicinity of the Charles University Botanic Garden and Folimanka Park. All amenities nearby.

Rental price **CZK 202/m²/month**. Rental and service charges listed without VAT. Lessee pays no commission.

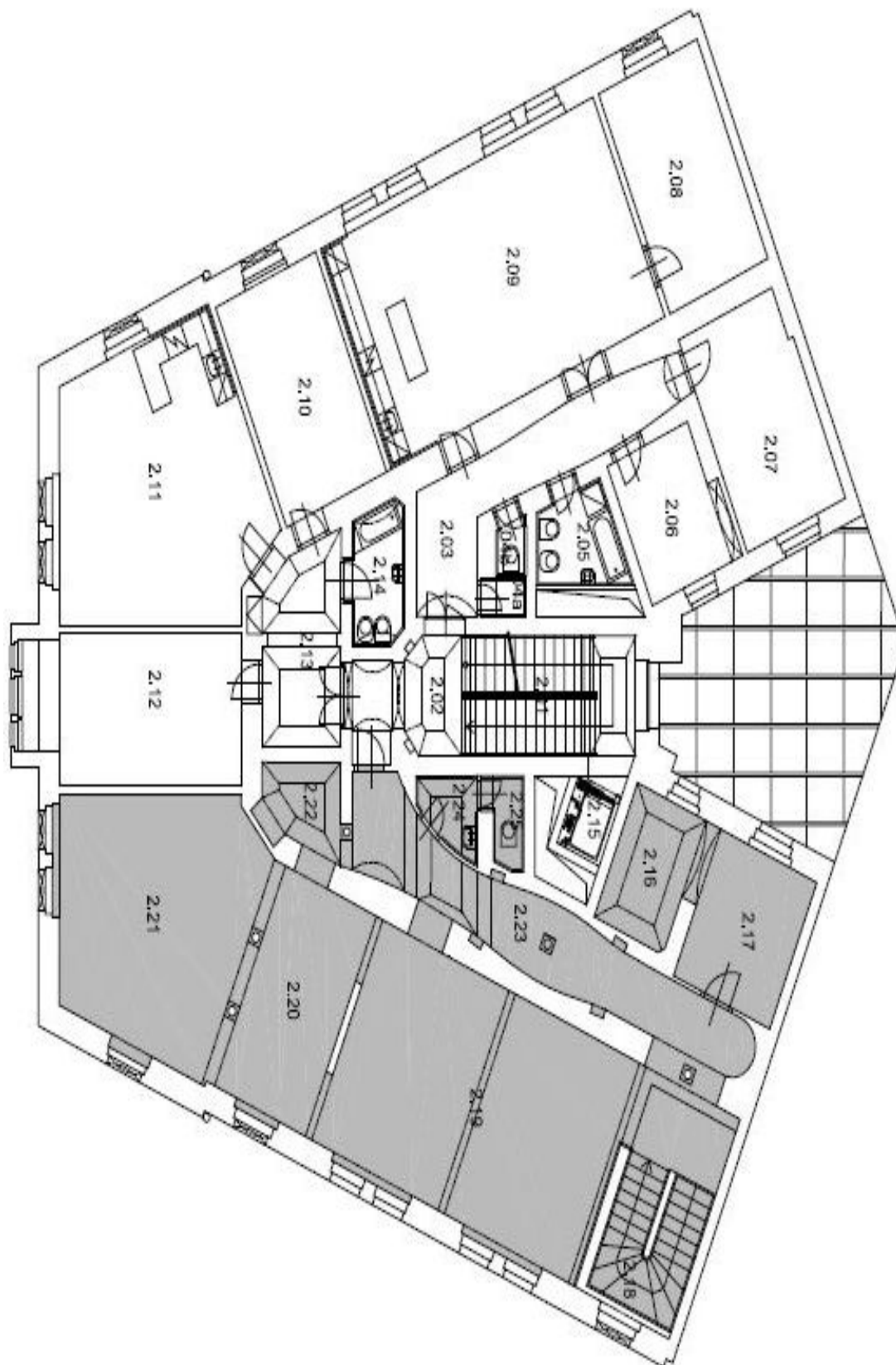




Retail space

Prague 2, Vyšehrad, Svobodova

Rented



1. PATRO