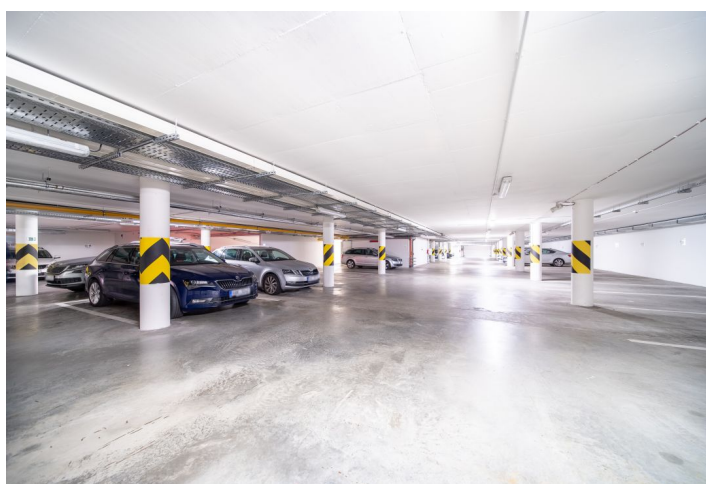
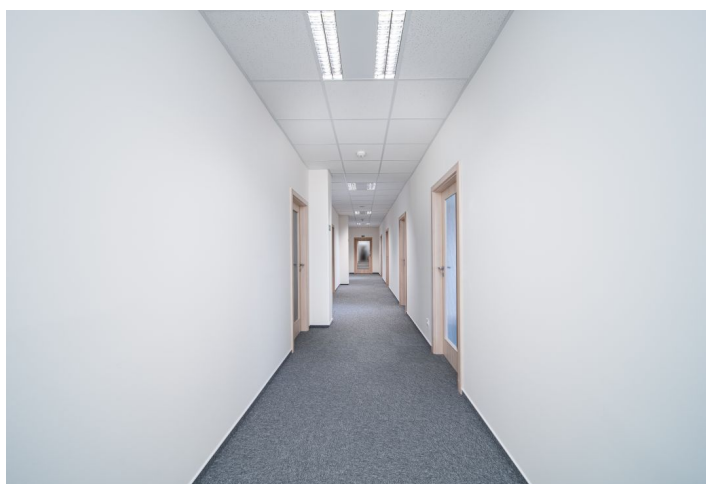




Office space

Prague 4, Michle, Hanusova

Rented



**Office space****Rented**

Prague 4, Michle, Hanusova

Service price	142 CZK monthly per m ²
Available area	161 m ²
Cellar	-
Parking	EUR 100 / ps / month
PENB	G
Reference number	26226

Office premises for lease in an administrative building situated in a business district of Pankrac in Prague 4. The building has great visibility from the city highway.

Location:

Excellent access by public transport – convenient access to the Pankrác and Budějovická metro stations (line C), and bus stops. The location is easily accessible by car as well – strategically situated near the D1 highway and the Prague Ring Road, within a short walking distance of the Arkády Pankrác shopping center and other services such as restaurants, hotels, conference centers, banks, a post office, schools, and sports facilities.

Features and services:

HVAC

Optical cable and digital telephone lines

Fire detectors and speakers throughout the building

Option to place a logo on the roof of the building

Double flooring with carpet squares

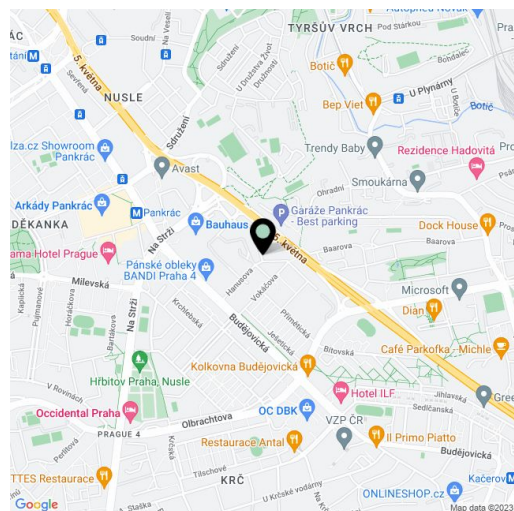
Partially openable windows with increased sound insulation of frames and glass

Individual heating/cooling settings

Sanitary rooms

Security service

Parking



Rents and service charges are listed without VAT. Lessee pays no commission.

