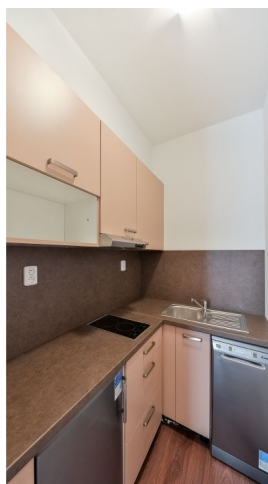




Apartment Studio (1+kk)

31 m², Praha 2, Vinohrady, Lublaňská

Rented





Apartment Studio (1+kk)

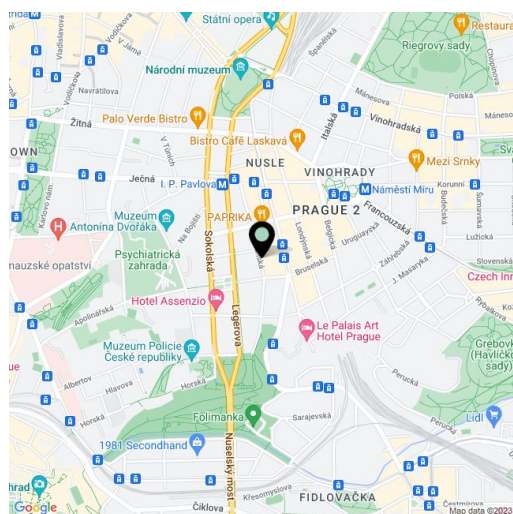
Rented31 m², Praha 2, Vinohrady, Lublaňská

Total area	31 m ²
Parking	-
Cellar	-
PENB	G
Reference number	26257
Available from	Immediately

Furnished studio on the fourth floor of a modern residence in the highly sought after residential neighborhood of Vinohrady. Located on a quiet street just a few blocks from tram stops and metro stations I.P. Pavlova and Náměstí Míru with quick access to the city center and full amenities in the area, within walking distance of Folimanka Park.

The studio consists of a living room / bedroom with a fully fitted open kitchen, shower bathroom with sink, a separate toilet, and entrance hall.

Laminated floors, tiles, built-in wardrobes, blinds, washing machine, dishwasher, video entry phone, lift, chip entry to the building. Deposit for common building charges and utilities CZK 3000 per month. Short term possible at a higher rent. Available from November 2017.



* Area of the unit according to the Civil Code. The area consists of the sum total area of the entire unit bounded by perimeter walls.