



Apartment One-bedroom (2+1)

Sold

90 m², Praha 1, Staré Město, Elišky Krásnohorské





Apartment One-bedroom (2+1)

Sold90 m², Praha 1, Staré Město, Elišky Krásnohorské

Total area	91 m ²
Floor area*	90 m ²
Balcony	1 m ²
Parking	-
Cellar	-
Service price	2 750 CZK monthly
PENB	G
Reference number	26316

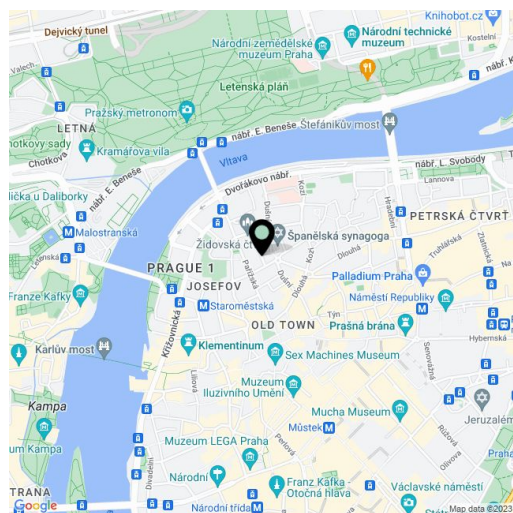
Elegant apartment in the heart of Prague - due to its location it is suitable both for living or for the establishment of a law firm, for example.

A hall with asymmetric **double-wing security door** provides plenty of space for the lobby or reception area. The right wall has a door to the chamber, separate toilet and bathroom. There also is an entrance to the **kitchen with a balcony** facing a quiet courtyard. The kitchen offers plenty of space for a dining area. The main room, where you enter directly from the hall features a **glazed bay with original wooden lining**. This room has access to another, almost 25-square meter room, which has a door to the hall as well.

Original floor tiles preserved under the carpet in the hall, **classic parquet floors** in the living room. **High ceilings** also contribute to the elegance of the space as well as the **original windows** with well-preserved hardware including cranks. The bathroom is spacious and bright thanks to a window. Comfort is provided by a **corner bathtub with a screen** and two sinks. The kitchen is standard with a **AEG** stove. Security is provided by an **alarm and a home telephone**.

One of the largest benefits of this apartment is its location: in the center of **Old Town**, close to **Pařížská Street**. The surroundings, like the building itself, are steeped in history. A tram stop at The Faculty of Law is a few minutes' walk away, from there it is just a little further to the Staroměstská metro station. The apartment does not have a parking space, but the owner can buy a preferential **residential parking card**.

Interior 89.6 m², balcony 1 m².



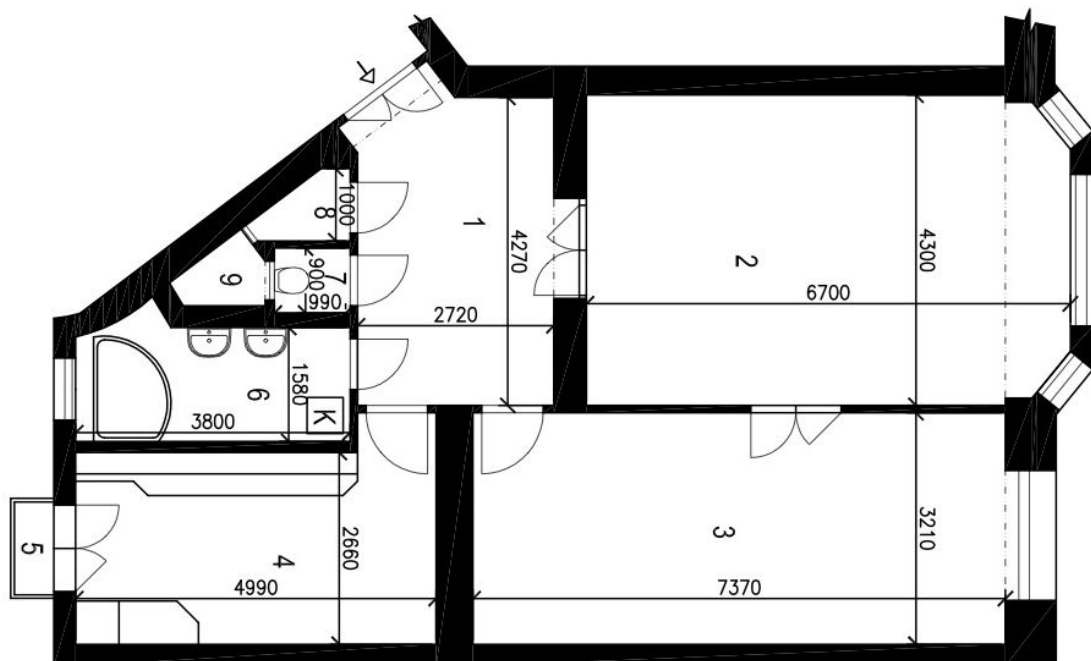
* Area of the unit according to the Civil Code. The area consists of the sum total area of the entire unit bounded by perimeter walls.



Apartment One-bedroom (2+1)

90 m², Praha 1, Staré Město, Elišky Krásnohorské

Sold



LEGENDA MÍSTNOSTÍ

Ozn	Název	m ²
1	HALA	12,7
2	OB. POKOJ	29,3
3	LOŽNICE	24,8
4	KUCHYŇ	14,2
5	BALKON	1,0
6	KOUPELNA	6,6
7	WC	1,0
8	KOMORA	1,0
9	SVĚTLIK	
	CELKEM	90,6