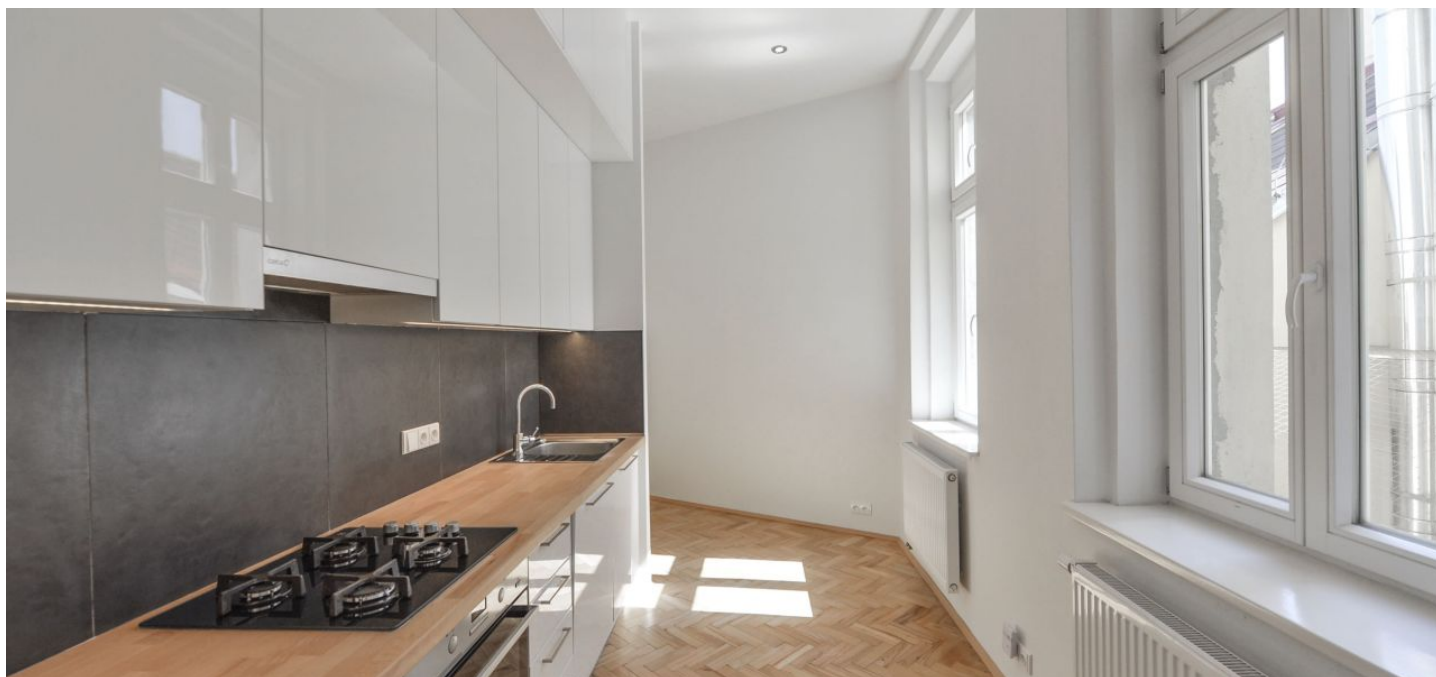




Apartment Two-bedroom (3+kk)

Rented

80 m², Prague 1, Nové Město, Opletalova





Apartment Two-bedroom (3+kk)

Rented

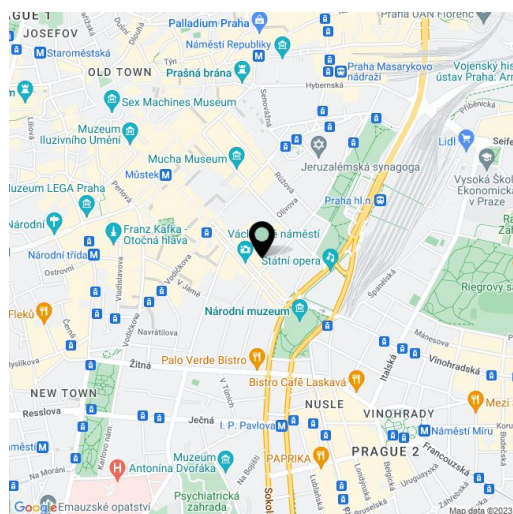
80 m², Prague 1, Nové Město, Opletalova

Total area	80 m ²
Parking	-
Cellar	-
PENB	G
Reference number	26331
Available from	Immediately

Completely refurbished 2-bedroom flat situated on the fourth floor of a renovated traditional building with lift. Well located in the very center of Prague just across from the Vrchlického sady park and Prague Main Train Station, and within walking distance of Wenceslas Square with immediate access to all three Prague metro lines and full amenities.

The interior includes living room with dining area and a fully fitted walk-through kitchen, two separate bedrooms facing the quiet courtyard, shower bathroom with toilet and bidet shower, walk-in closet and entrance hall.

Large windows, high ceilings, solid wood parquet floors, gas boiler, washing machine, dishwasher, chip entry to the building. Common building charges and water CZK 490/person month. Gas and electricity will be transferred to the tenant.



* Area of the unit according to the Civil Code. The area consists of the sum total area of the entire unit bounded by perimeter walls.