



Apartment Three-bedroom (4+kk)

Rented

101 m², Prague 1, Nové Město, Vodičkova





Apartment Three-bedroom (4+kk)

Rented

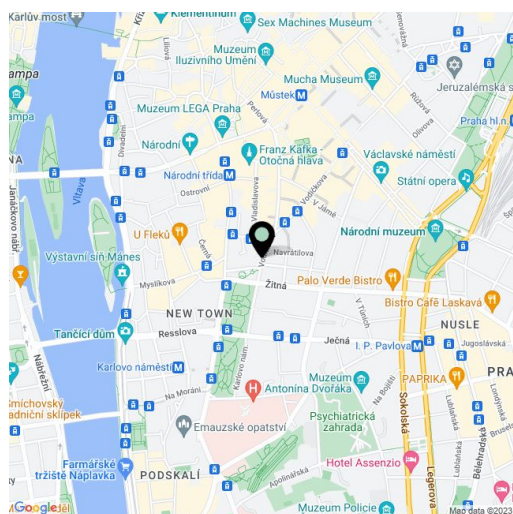
101 m², Prague 1, Nové Město, Vodičkova

Total area	101 m ²
Parking	-
Cellar	-
PENB	G
Reference number	26346
Available from	Immediately

Attic apartment in a unique Neo-Renaissance building, part of the so called "Hlávka buildings" from 1887-98, built by a renown Czech architect Josef Fanta for a prominent Czech philanthropist Josef Hlávka. This brand new fully reconstructed 3-bedroom attic flat with preserved original details is situated on the fifth top floor of a renovated historic palace with gables, rich sgraffito decorations and grand interior. Located in a prime central area with full amenities and instant access to metro and multiple tram links.

The interior includes a large air-conditioned living room with a fully fitted open kitchen, three bedrooms, bathroom with a corner bathtub, a separate toilet, and an open entry hall.

Laminated floors, tiles, built-in wardrobes, electric boiler, washing machine, dishwasher, lift. Common building charges CZK 600/person/month. Utilities are billed separately.



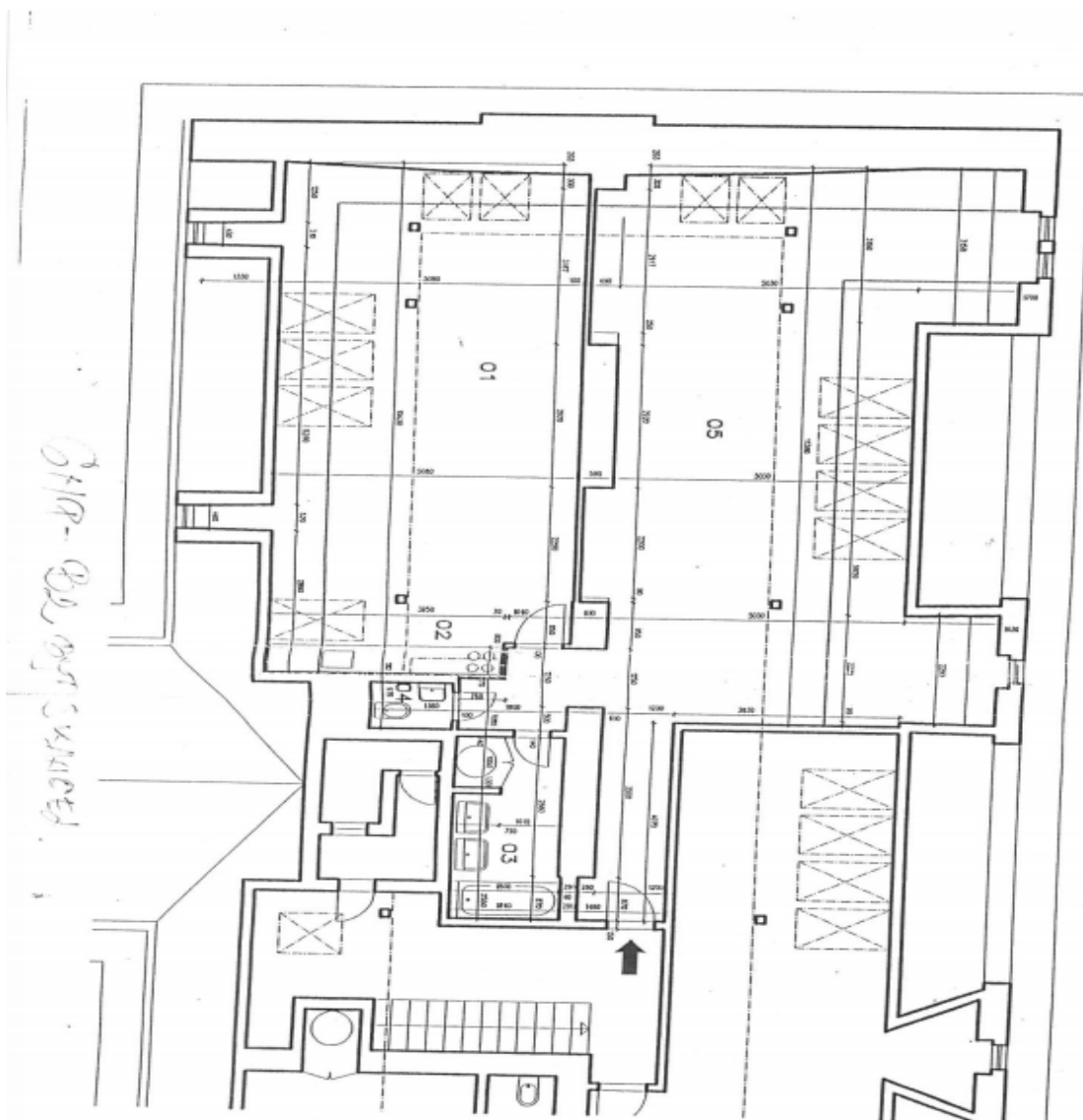
* Area of the unit according to the Civil Code. The area consists of the sum total area of the entire unit bounded by perimeter walls.



Apartment Three-bedroom (4+kk)

Rented

101 m², Prague 1, Nové Město, Vodičkova



OPRAVA A REKONSTRUCE PLOŠEK PROSTORU NA BYT S KANCELÁŘEM
 Adresová: Vodička a Vodičkova 15.01, Praha 1

PROJEKTANT
 MEST Designing
 Hru. Frim Praha, s.r.o.
 Křižov. 26, Praha 6, 160 00
 IČO: 252 23 42 1

PROJEKT
 REK. 100.1 a 1.2.
 Společ. 20, Praha 1

PROJEKTANT
 IČO: 252 23 42 1

STAVBA
 DĚLÍK: 3 / 396
 POČET JAK: 2
 VÝŠKA: 1,90
 Č. VÝŠKA: 4

B2 - BYT S KANCELÁŘEM

DOKUMENTACE SKUTEČNÉHO PROVEDENÍ



LEGENDA MÍSTNOSTI

Č.	OBEZ MÍSTNOSTI	Plocha (m ²)		
		PODLAŽNÍ	UŽITNÁ	OBÝTNÍ
01	OBÝTNÍ PROSTOR	48,87	33,03	33,03
02	KUCHYNSKÝ KOUT	6,00	6,00	
03	KOUPELNA	6,55	6,55	
04	WC	1,34	1,34	
CELKEM 1		60,96	47,02	33,03
05		74,01	54,07	
CELKEM 2		134,87	101,09	33,03