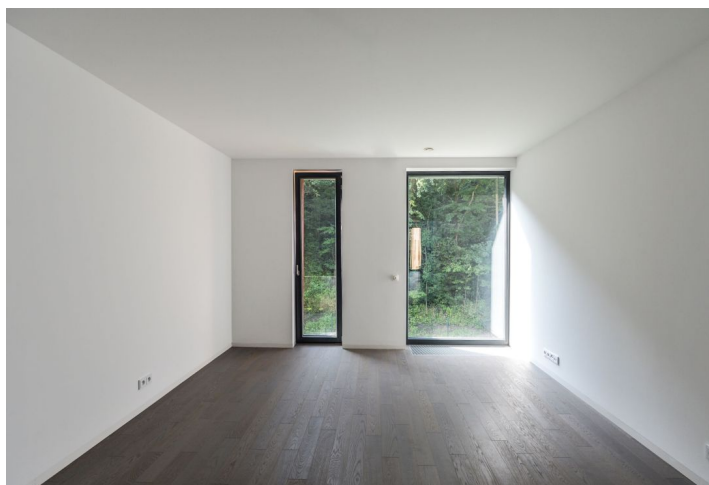




## House Four-bedroom (5+kk)

Rented

300 m<sup>2</sup>, Prague 6, Dejvice, V Šáreckém údolí





## House Four-bedroom (5+kk)

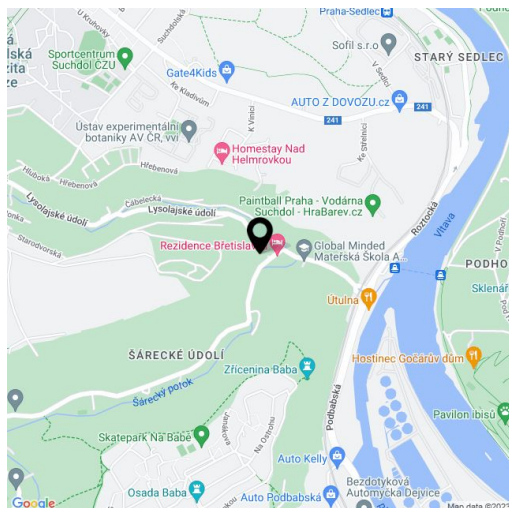
**Rented**300 m<sup>2</sup>, Prague 6, Dejvice, V Šáreckém údolí

Plot	734 m <sup>2</sup>
Foot print	128 m <sup>2</sup>
Parking	Double garage.
Garage	Yes
Cellar	Yes
PENB	A
Reference number	26355
Available from	Immediately

**Brand new high standard 5-bedroom 3-bathroom semidetached house - part of the project TOP RESIDENCE with interiors designed by the Olgoj Chorchoj studio, situated in the charming Šárecké Valley surrounded by green hills and peaceful countryside. Good connection to the city center, the airport and international schools in Prague 6, convenient to Dejvická metro station with full amenities in the area. Steps to Global Concept Montessori School, five min. to the ISP School.**

Ground floor: living room with dining area, a fully fitted open kitchen and direct access to the terrace and garden, guest bedroom with bathroom (shower, toilet), pantry, guest toilet, entry hall. First floor: three bedrooms - master bedroom with en-suite bathroom (bath, bidet, toilet), second bathroom (shower, toilet). Two bedrooms have terrace access. Basement floor: hall, wellness / fitness room, laundry room, storeroom, utility room, garage access.

Green views, oak floors and tiles, French windows, automatic outdoor blinds, dishwasher, video entry phone, central vacuum cleaner. Double garage, automatic garage gate, 24-hour security, social club and a children's playground. There is a number of cycling and jogging paths in the area. Utilities approx. CZK 10,000/month.





## House Four-bedroom (5+kk)

300 m<sup>2</sup>, Prague 6, Dejvice, V Šáreckém údolí

Rented



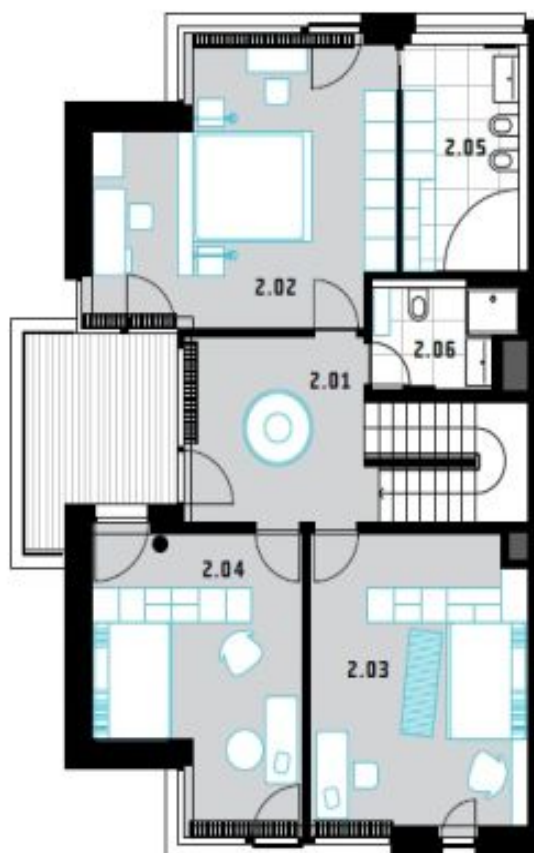
1. PATRO   1ST FLOOR		m <sup>2</sup>
1.01	hala   hall	7,8
1.02	pokoj pro hosta   guest room	10,3
1.03	koupelna   bathroom	3,2
1.04	obývací pokoj   living room	31,0
1.05	jídelsna + kk   dining room + kk	29,3
1.06	komora   pantry	3,6
1.07	komora   pantry	4,2
1.08	schodiště   staircase	6,3
1.09	umývárna	1,5
1.10	WC	1,8
<b>UŽITNÁ PLOCHA   USABLE FLOOR AREA</b>		<b>98,9</b>
TERASA   TERRACE		14,1
ZAVĚTRÍ   LEE		2,3



## House Four-bedroom (5+kk)

300 m<sup>2</sup>, Prague 6, Dejvice, V Šáreckém údolí

Rented



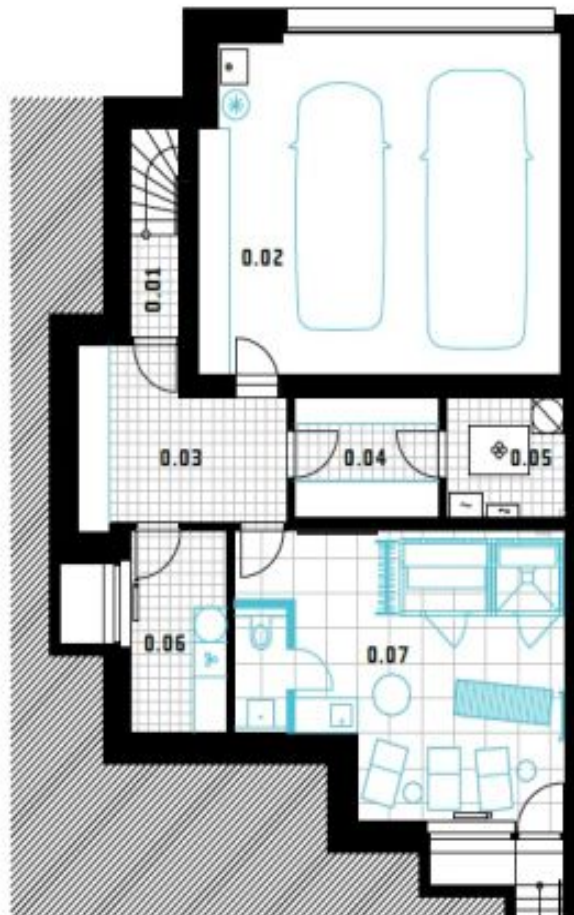
2. PATRO   2ND FLOOR		m <sup>2</sup>
2.01	hala   hall	10,4
2.02	ložnice rodičů   masterbedroom	25,0
2.03	ložnice dětí   bedroom children	20,6
2.04	ložnice dětí   bedroom children	17,9
2.05	koupelna   bathroom	8,5
2.06	koupelna   bathroom	4,6
<b>UŽITNÁ PLOCHA   USABLE FLOOR AREA</b>		<b>87,0</b>
TERASA   TERRACE		9,2



## House Four-bedroom (5+kk)

300 m<sup>2</sup>, Prague 6, Dejvice, V Šáreckém údolí

Rented



SUTERÉN   UNDERGROUND		m <sup>2</sup>
0.01	chodba   corridor	5,0
0.02	garáž   garage	39,3
0.03	sklad   storage	10,8
0.04	sklad   storage	5,5
0.05	technická místnost   utility room	4,7
0.06	domácí práce   workroom	6,2
0.07	fitness / sauna	27,5
<b>UŽITNÁ PLOCHA   USABLE FLOOR AREA</b>		<b>98,6</b>