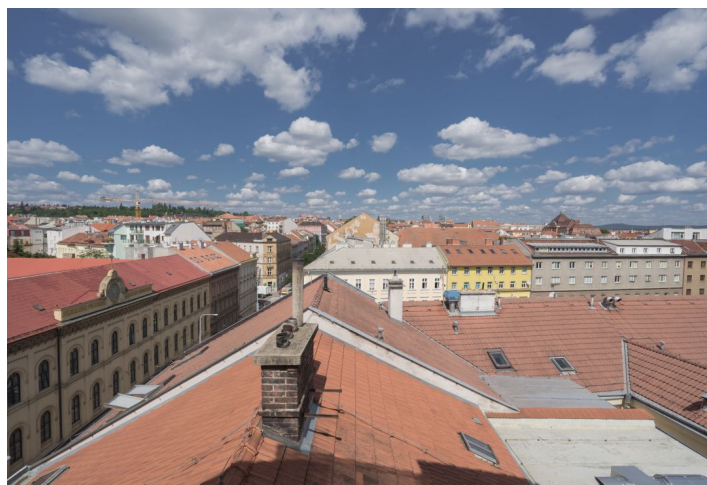
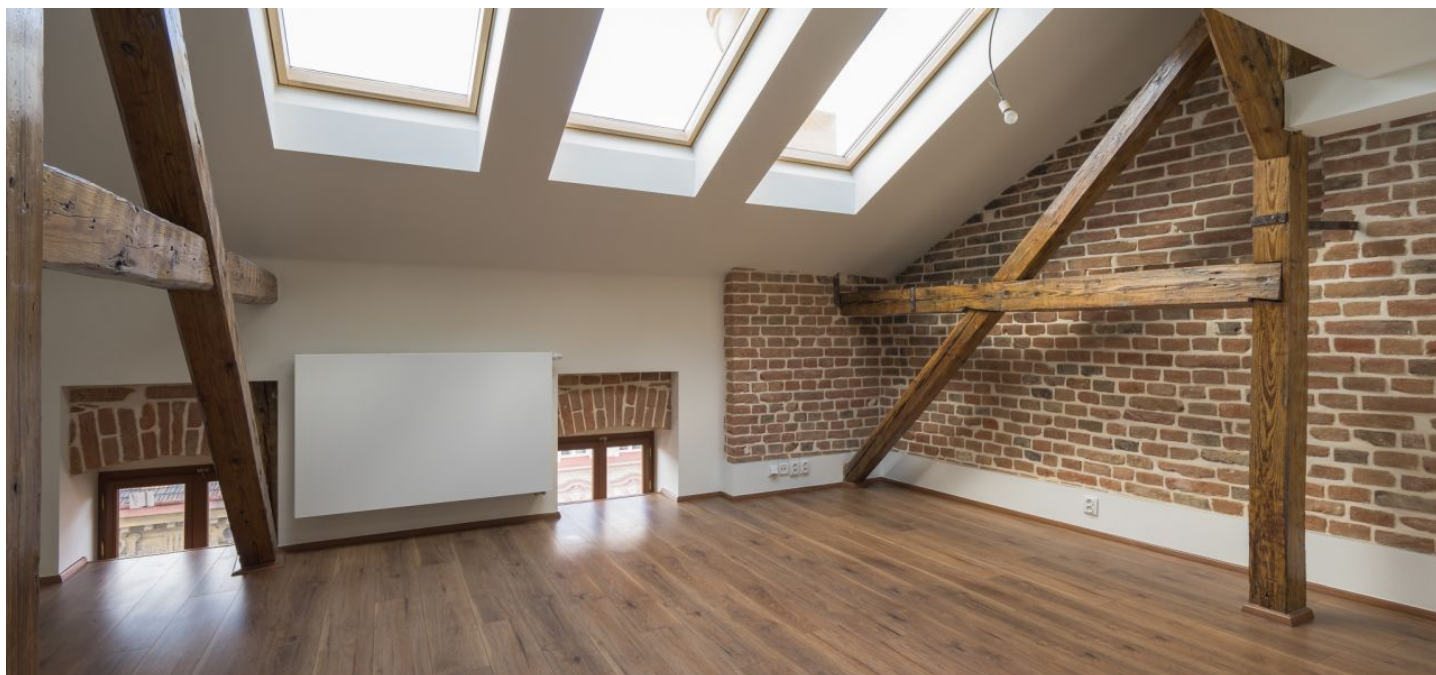




Apartment One-bedroom (2+kk)

Sold

65 m², Brno-město, Brno - střed





Apartment One-bedroom (2+kk)

Sold65 m², Brno-město, Brno - střed

Total area	65 m ²
Parking	-
Cellar	-
PENB	C
Reference number	26365

* Area of the unit according to the Civil Code. The area consists of the sum total area of the entire unit bounded by perimeter walls.

Newly built one-bedroom attic apartment situated on the 4th floor of a beautiful apartment building designed by a famous Brno architect, within reach of Špilberk Castle and the Red Church and a few steps from public transport stops. Close proximity to the historic center, full public amenities and also plenty of greenery and a wide range of leisure activities.

The lower level of the apartment consists of a small entrance hall with access to a separate toilet and a living room with **large roof windows** and preparation for a kitchen. Upstairs you can find a bedroom and a bathroom with toilet and shower. **Roof terrace addition possible.**

The apartment is equipped with **wooden floors**, large-format tiles, **wooden windows**, fire doors, gas condensing boiler, preparation for air-conditioning and a home phone.

Directly in the house there is a family bistro with a health food store. Minigolf, sports centers, a large ballroom, school facilities and countless restaurants & cafés can be visited in the area. Within a few minutes you will find a park with a pleasant seating area and a children's playground, as well as Špilberk Castle.

Interior 64.7 m².