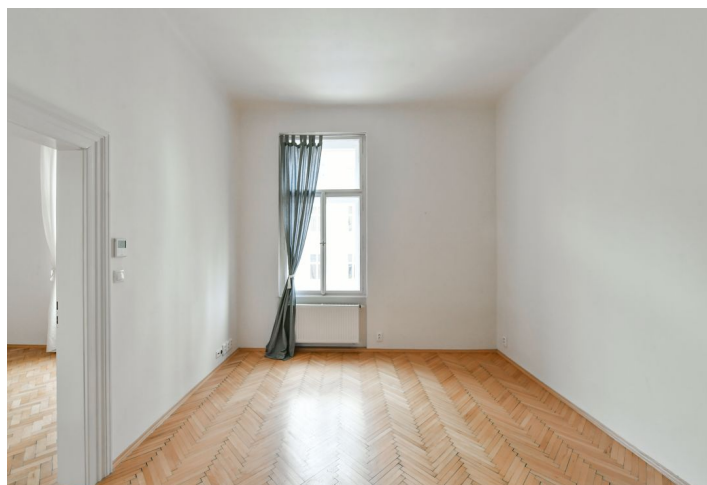




Apartment Two-bedroom (3+kk)

Rented

68 m², Prague 2, Vinohrady, Na Švihance





Apartment Two-bedroom (3+kk)

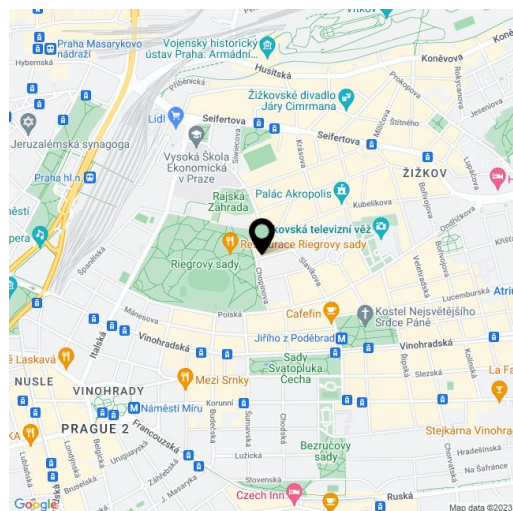
Rented68 m², Prague 2, Vinohrady, Na Švihance

Total area	68 m ²
Parking	-
Cellar	-
PENB	G
Reference number	26381
Available from	Immediately

Boasting a wonderful location next to the Riegrovy sady park, is this refurbished 2-bedroom flat on the second floor of a renovated residential building with a lift, reception and conference room. Very quick access to the city center, located just a short walk from Jiřího z Poděbrad Square, featuring a metro station & tram stop and a popular regular produce market. The neighborhood offers a rich array of amenities.

The unfurnished flat includes a living room with a fully fitted open kitchen and dining area, two bedrooms, a bathroom with bathtub and toilet, a walk-in closet / storage room, and an entry hall.

Preserved original details, high ceilings, solid wood parquet and laminated floors, security entry door, storage, central heating, dishwasher, cable TV connection, camera system in the building. Monthly deposit for common building charges, water and heating CZK 3000/month. Electricity is billed separately (transfer to the tenant).

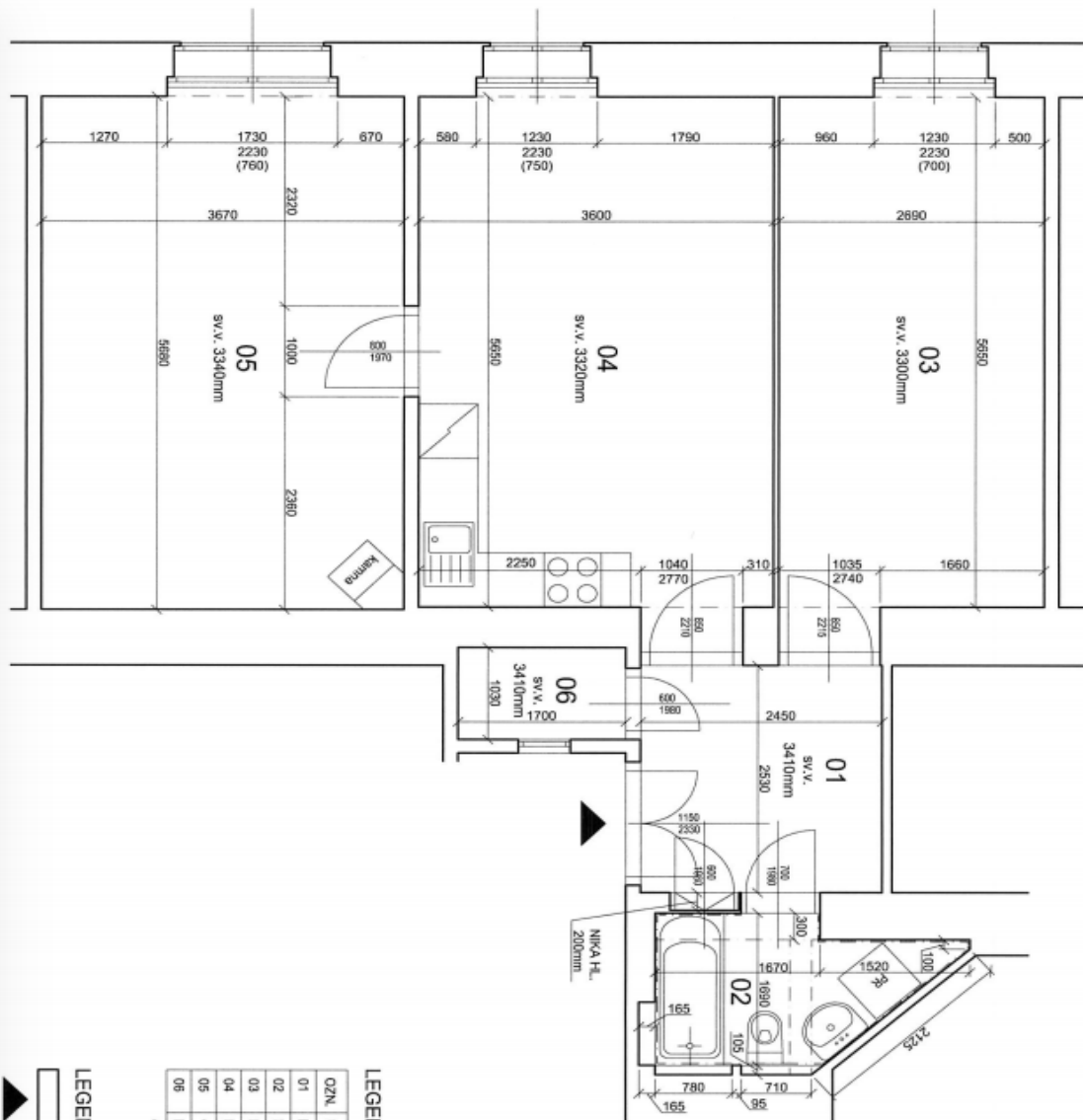


* Area of the unit according to the Civil Code. The area consists of the sum total area of the entire unit bounded by perimeter walls.



Apartment Two-bedroom (3+kk)

Rented

68 m², Prague 2, Vinohrady, Na Švihance

LEGENDA MÍSTNOSTI

OZN.	ÚČEL MÍSTNOSTI	PLÁN(Ů)	PODLAHA	STĚNY
01	HALA	6,20	PARKETOVÉ W.V.SY	MA.LBA
02	KOUPELNA A WC	3,98	KERAMICKÁ DLAŽBA	KERAMICKÝ OBLAD
03	LOŽNICE	13,20	PVC	MA.LBA
04	KUCHYŇE S JIDELNOU	20,34	PARKETOVÉ W.V.SY	MA.LBA
05	OBÝVAJACÍ POKOJ	20,85	PARKETOVÉ W.V.SY	MA.LBA
06	KOCHYŇA	1,75	PVC	MA.LBA

CELKEM - BYT č. 11

68,32m²

LEGENDA MATERIÁLŮ

STAVAJÍCÍ KONSTRUKCE
 VSTUP DO BYTU