



## Apartment Two-bedroom (3+kk)

Rented

83 m<sup>2</sup>, Prague 2, Vinohrady, Na Kozačce





## Apartment Two-bedroom (3+kk)

Rented

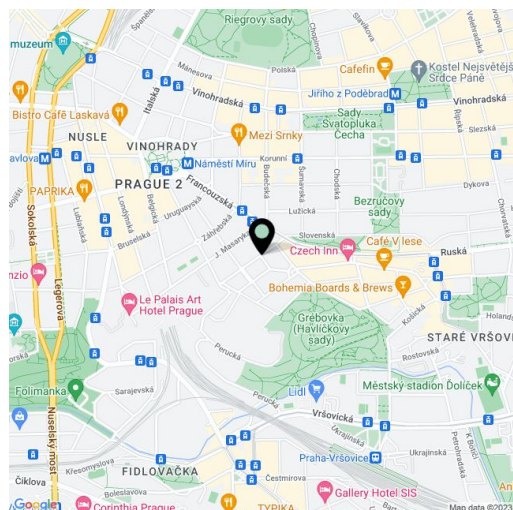
83 m<sup>2</sup>, Prague 2, Vinohrady, Na Kozačce

Total area	83 m <sup>2</sup>
Parking	-
Cellar	-
Service price	Deposit for common building charges and water CZK 1,600/month. Gas and electricity are billed separately.
PENB	E
Reference number	26489
Available from	Immediately

This bright corner, reconstructed unfurnished apartment, overlooking the greenery of an adjacent park, is located on the 1st floor of a renovated apartment building with an elevator, just a minutes' walk from Havlíčkovy Sady Park. An attractive and quiet residential location with fast connections to the city center, close to the Náměstí Míru metro station. A tram stop with direct connections to the metro on Náměstí Míru Square, I.P. Pavlova, and Karlovo náměstí is a 3-minute walk away.

The apartment consists of a corner living room with a new fully fitted kitchen, a walk-through study, a bedroom with an en-suite bathroom (shower, sink), a shared bathroom (bathtub, sink), a separate toilet, and an entrance hall.

Features include wooden parquet floors, large-format tiles, bike storage in the building.



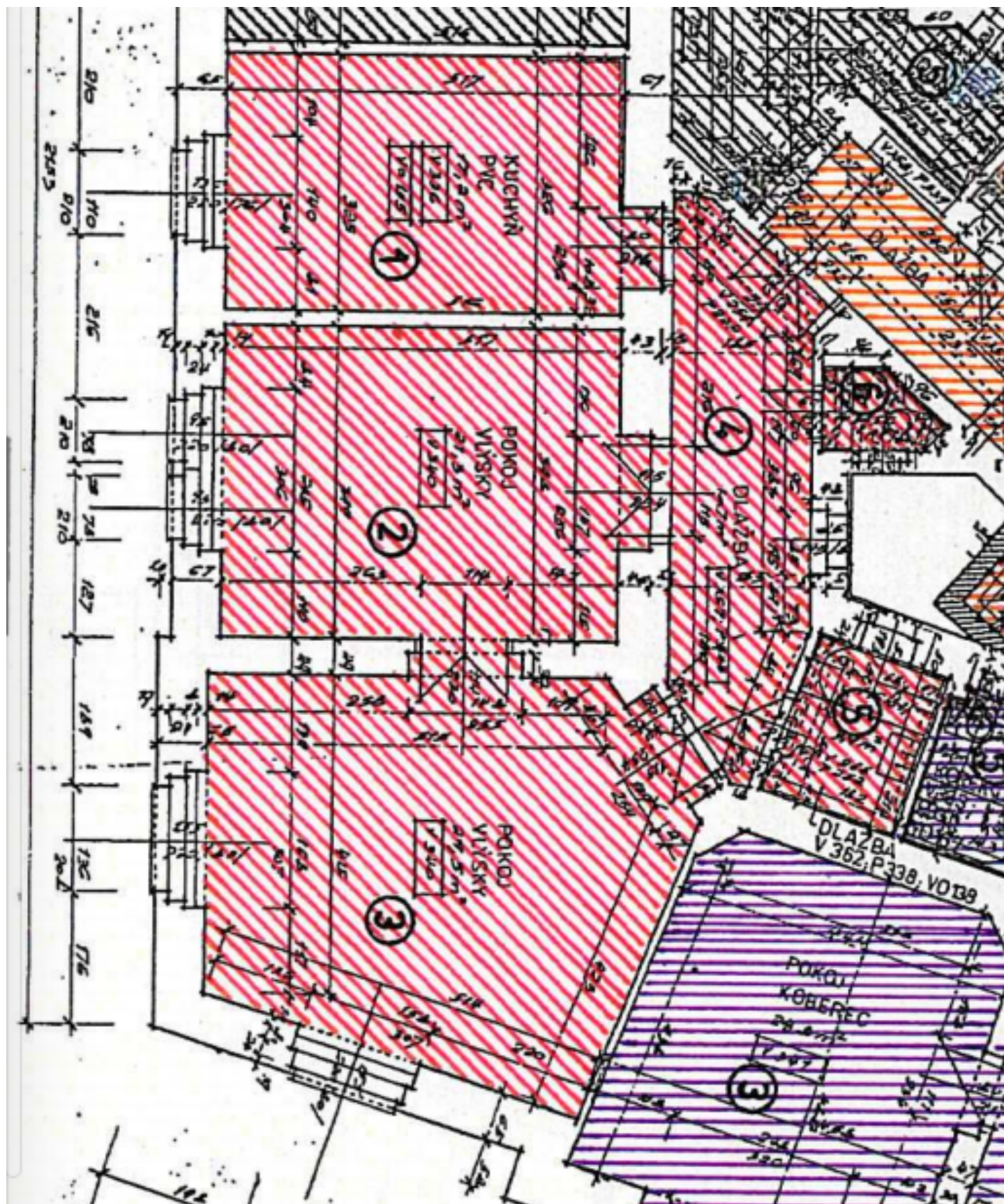
\* Area of the unit according to the Civil Code. The area consists of the sum total area of the entire unit bounded by perimeter walls.



# Apartment Two-bedroom (3+kk)

Rented

83 m<sup>2</sup>, Prague 2, Vinohrady, Na Kozačce





## Apartment Two-bedroom (3+kk)

Rented

83 m<sup>2</sup>, Prague 2, Vinohrady, Na Kozačce

BYT	
1. KUCHYŇ	17,2 M <sup>2</sup>
2. POKOJ	21,3 M <sup>2</sup>
3. POKOJ	29,5 M <sup>2</sup>
4. HALA	10,7 M <sup>2</sup>
5. KOUPELNA	3,9 M <sup>2</sup>
6. WC	1,2 M <sup>2</sup>
	<b>83,8 M<sup>2</sup></b>