



Apartment One-bedroom (2+kk)

Rented

58 m², Prague 1, Staré Město, Betlémské náměstí





Apartment One-bedroom (2+kk)

Rented

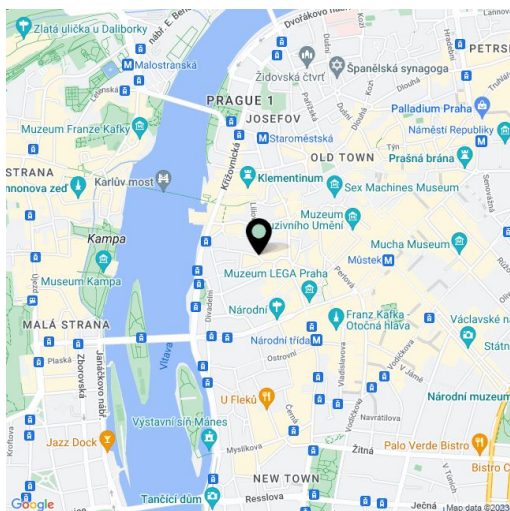
58 m², Prague 1, Staré Město, Betlémské náměstí

Total area	58 m ²
Parking	-
Cellar	-
PENB	D
Reference number	26514
Available from	Immediately

Completely refurbished and furnished romantic 1-bedroom flat situated on the second floor in a renovated historic building opposite the medieval Bethlehem Chapel. Unique central location in the heart of the historic Prague, just moments from the Charles Bridge and the Old Town Square, a five minute walk to Wenceslas Square. Full amenities, tram links and metro within easy reach.

The interior features one bedroom with a walk-in closet, living room with dining area and views of the Square and Chapel, a fully fitted open kitchen, bathroom (massage shower, toilet), and entry hall with built-in storage.

High ceilings, large windows, solid wood parquet flooring, carpet, tiles, security entry door, central heating, washer, induction cooktop, dishwasher with dryer, fan and microwave ovens, basic kitchenware, bedding, video entry phone, alarm that can be connected to a security agency. No lift. Common building charges, including water, heating and the security agency CZK 3250 per month (CZK 900 for an additional person). Electricity is billed separately (transfer to the tenant). Available from April 2018.



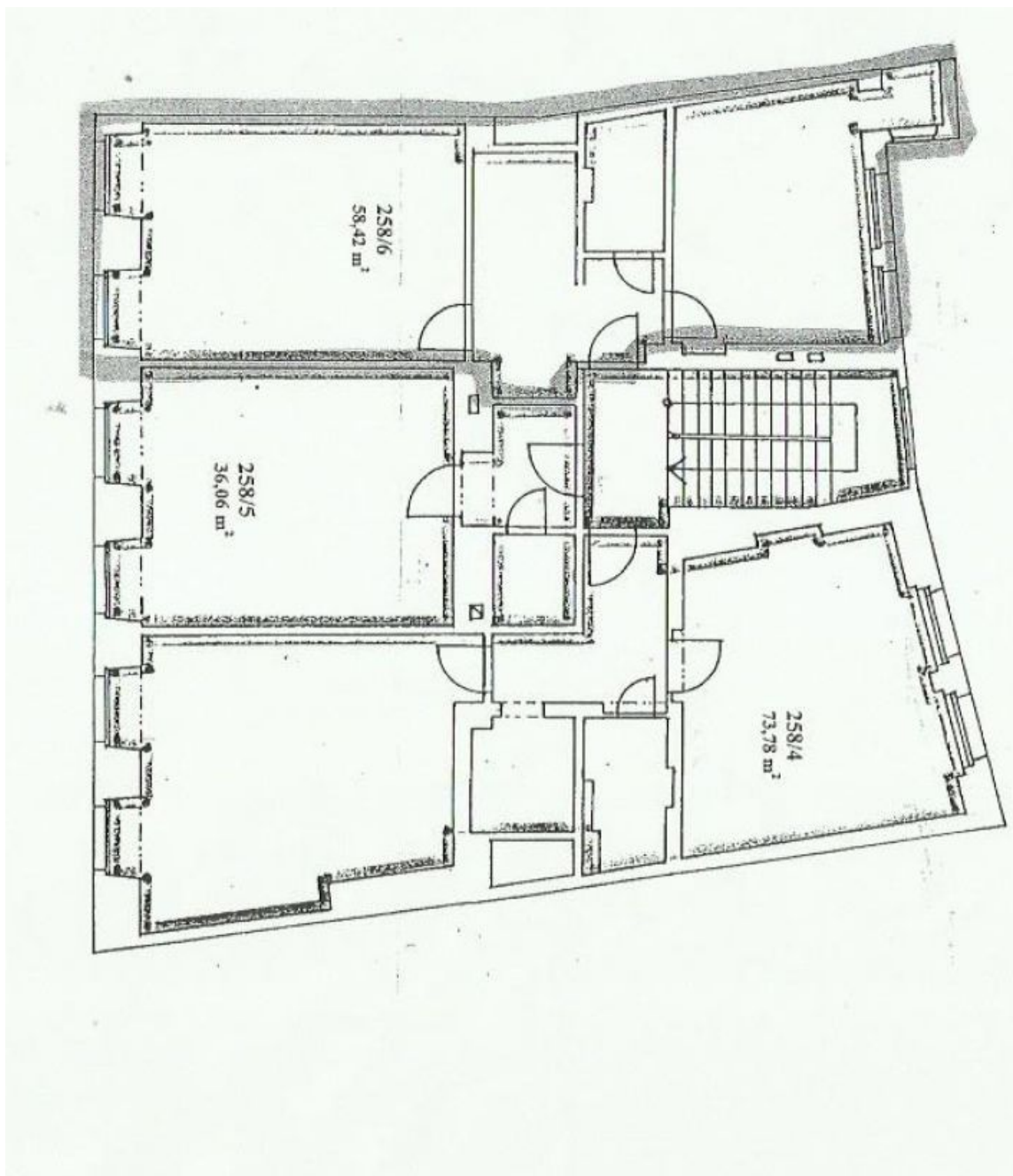
* Area of the unit according to the Civil Code. The area consists of the sum total area of the entire unit bounded by perimeter walls.



Apartment One-bedroom (2+kk)

Rented

58 m², Prague 1, Staré Město, Betlémské náměstí





Apartment One-bedroom (2+kk)

Rented

58 m², Prague 1, Staré Město, Betlémské náměstí

