



Apartment Four-bedroom (5+kk)

Rented

249 m², Prague 6, Dejvice, Na Pískách





Apartment Four-bedroom (5+kk)

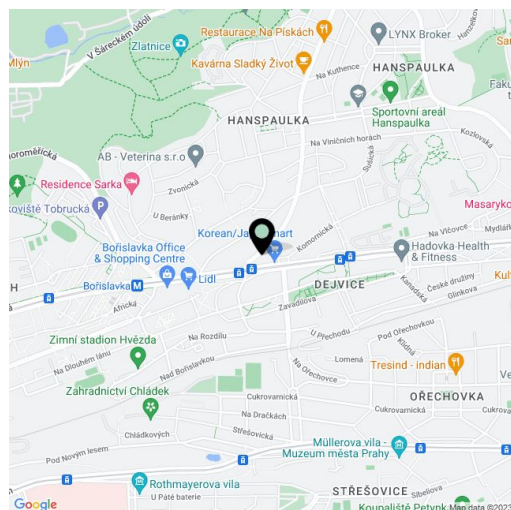
Rented249 m², Prague 6, Dejvice, Na Pískách

Total area	317 m ²
Floor area*	249 m ²
Balcony	9 m ²
Terrace	59 m ²
Parking	Garage parking.
Garage	Yes
Cellar	-
PENB	G
Reference number	26516
Available from	Immediately

Benefiting from a prestigious location, this is a 4-bedroom 2-bathroom split-level attic flat with terraces, balconies, sauna and beautiful views of the city incl. the Prague Castle. Situated on the second floor of a free standing renovated villa in the exclusive residential neighborhood of Hanspaulka. Excellent transportation connections (bus, trams, a few minutes to Bořislavka and Dejvická metro stations). Very popular and sought after location surrounded by greenery, just a few minute drive from Vítězné náměstí Square with full amenities. Convenient to the airport and international schools.

The lower level offers a huge living room with terrace access, a fully fitted open kitchen and dining room with terrace access, guest bedroom / study with a balcony, guest toilet, and a large entrance hall. The upper floor includes two air-conditioned bedrooms (one with a balcony), study, two bathrooms (one with a sauna), and another large terrace.

Solid wood parquet floors, carpets, tiles, security entry door, storage, induction cooktop, dishwasher. Garden with pergola and seating may be used by the tenants. Two garage parking spaces included. Utilities CZK 7000 per month. Interior 250 m². Balconies 4 + 4,5 m². Terraces 34,5 + 24,5 m².



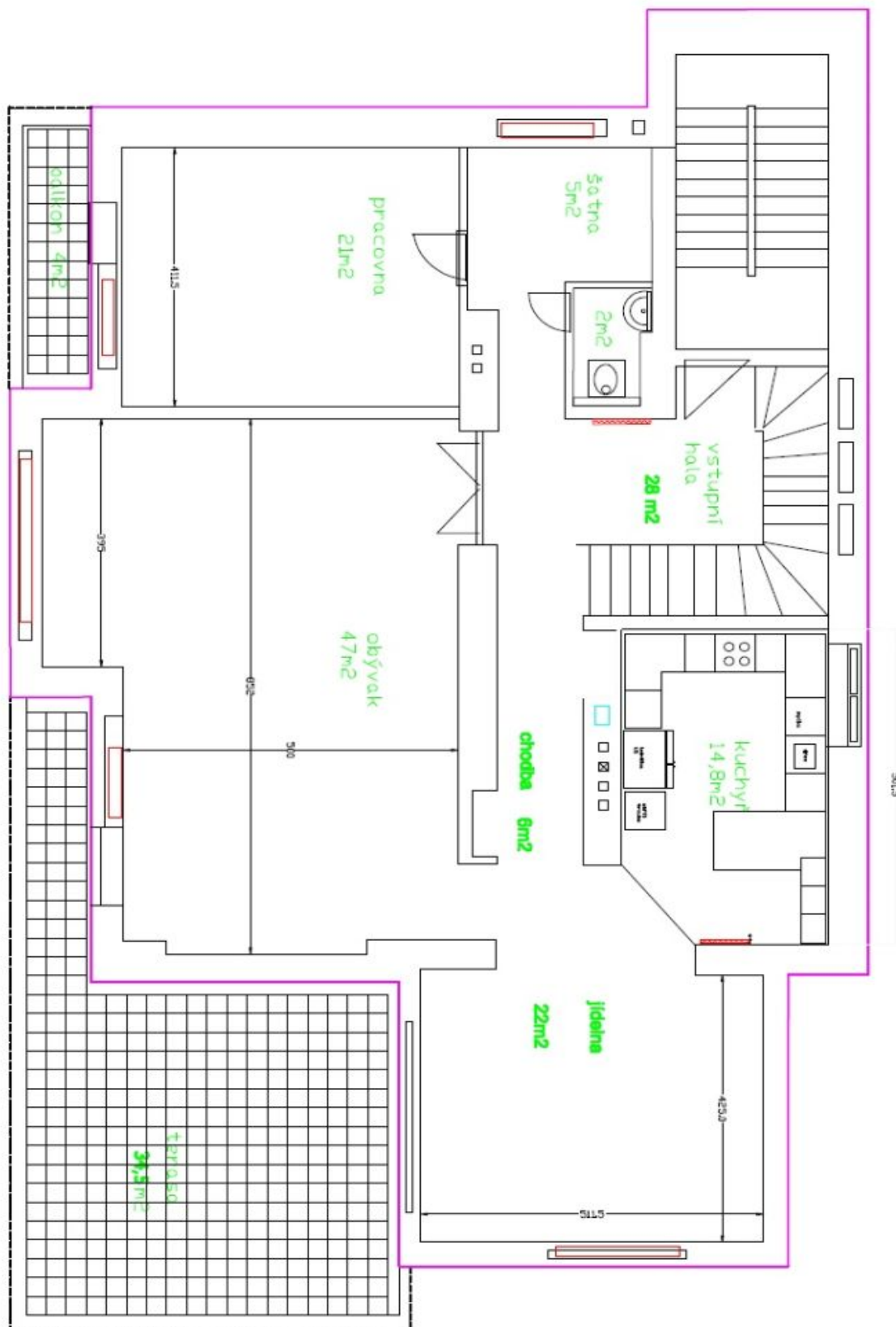
* Area of the unit according to the Civil Code. The area consists of the sum total area of the entire unit bounded by perimeter walls.



Apartment Four-bedroom (5+kk)

Rented

249 m², Prague 6, Dejvice, Na Pískách





Apartment Four-bedroom (5+kk)

Rented

249 m², Prague 6, Dejvice, Na Pískách

