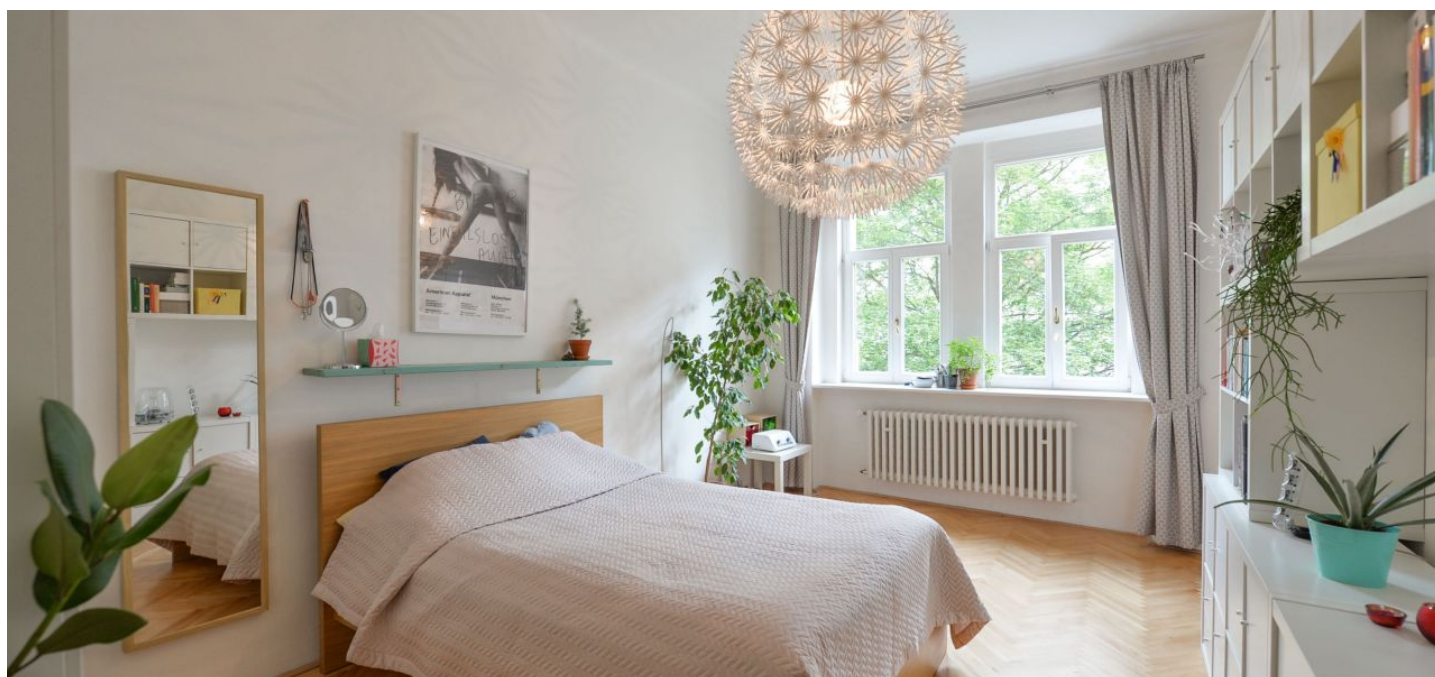




## Apartment Studio (1+1)

40 m², Prague 2, Nusle, Nezamyslova

**Rented**





## Apartment Studio (1+1)

40 m², Prague 2, Nusle, Nezamyslova

Rented

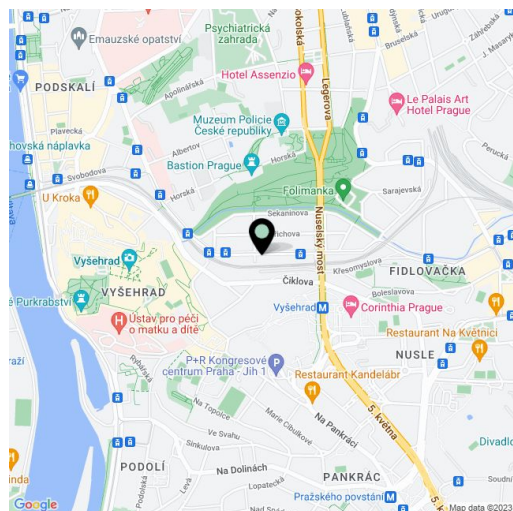
Total area	40 m²
Parking	-
Cellar	Yes
PENB	G
Reference number	26517
Available from	Immediately

Bright and airy furnished studio flat after complete reconstruction located on the 2nd floor of an apartment building without a lift in a very attractive part of Nusle in the vicinity of Vyšehrad. Just a few steps from the Folimanka Park with a new playground and outdoor gym, and a 2-minute walk from the tram stop connecting with the Metro.

The apartment consists of a spacious bedroom with a **large window and a view of greenery** facing the street, a kitchen with dining area facing the courtyard, a bathroom with shower and toilet, and an entry hall.

Features wooden parquet flooring, vinyl flooring, large format and mosaic tiles, cellar. Quiet location with a pleasant atmosphere, adjacent to two large parks and with excellent connection to the center. Very easy access to a popular cycle path along the river. Common building charges and deposit for utilities are billed separately. Available from mid-August 2020.

Interior 39,5 m², cellar 2,6 m².



\* Area of the unit according to the Civil Code. The area consists of the sum total area of the entire unit bounded by perimeter walls.