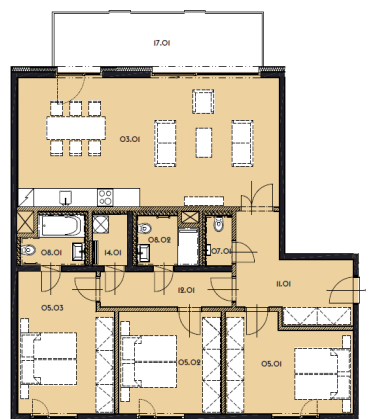




Apartment Three-bedroom (4+kk)

Sold

130 m², Prague 8, Libeň





Apartment Three-bedroom (4+kk)

Sold130 m², Prague 8, Libeň

Total area	146 m ²
Floor area*	130 m ²
Balcony	16 m ²
Parking	garage parking space at extra cost
Garage	Yes
Cellar	Yes
PENB	G
Reference number	26524

* Area of the unit according to the Civil Code. The area consists of the sum total area of the entire unit bounded by perimeter walls.

Modern apartment with balcony situated on the 2nd floor of a new, architecturally interesting residential complex on the border of Karlín and Libeň. Residents will enjoy absolute privacy, beautiful views of the river through large windows, nice surroundings with plenty of greenery and easy access to the city center. Completion scheduled for the end of 2019 / beginning of 2020.

This apartment offers an entrance hall, an open concept living room, dining area and kitchen with access to a balcony, 3 bedrooms (one with en-suite bathroom), main bathroom, guest toilet and storeroom.

The apartment is equipped with **wooden windows** with insulating triple glazing, large ceramic tiles, **wooden floors**, LED lighting, intelligent home control system, underfloor heating and complete sanitary facilities. The entire residential building is equipped with a camera system. The apartment also has a separate **cellar unit**.

The location is close to all services and public transport stops including the nearby Palmovka metro station. Primary and grammar school, a number of shops, fitness center, golf course - all nearby. The adjacent Thomayerovy sady park is a great place for rest and relaxation.

Interior 130.7 m², balcony 15.8 m².