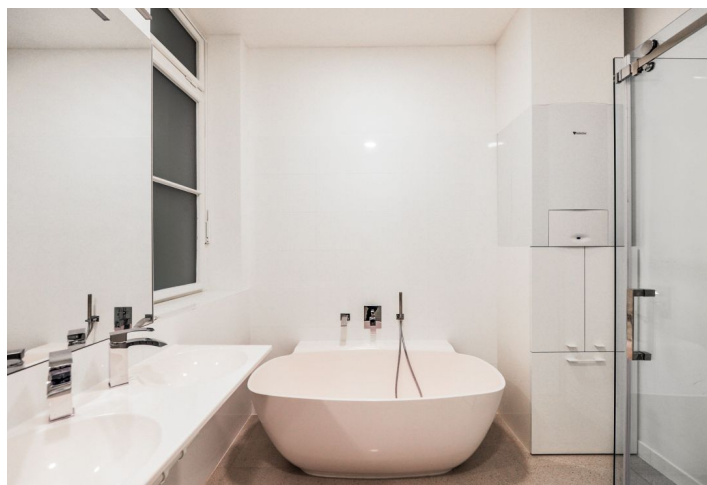




## Apartment Two-bedroom (3+kk)

Rented

137 m<sup>2</sup>, Prague 1, Josefov, U Starého hřbitova





# Apartment Two-bedroom (3+kk)

Rented

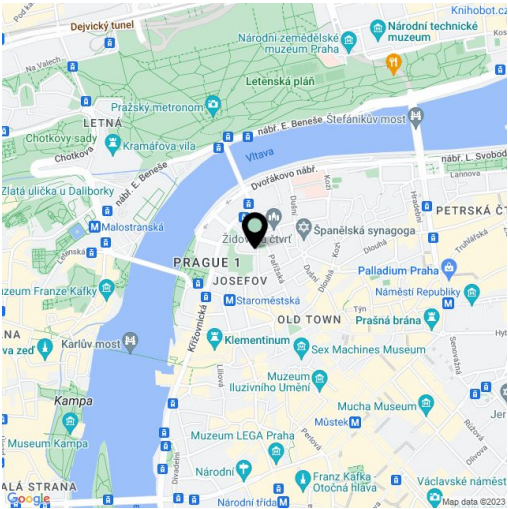
137 m², Prague 1, Josefov, U Starého hřbitova

Total area	137 m²
Parking	-
Cellar	Yes
PENB	G
Reference number	26543
Available from	Immediately

Spacious apartment with unique views of the Old Jewish Cemetery. This new fully reconstructed 2-bedroom flat is situated on the first floor of a fully refurbished traditional building with lift. Located right in the heart of the historic Old Town, just off the exclusive Pařížská street, moments from the Old Town Square and the Vltava embankment, and literally steps from the Old Jewish cemetery. Quick access to trams, buses and metro, lots of quality restaurants, cafes, bars and shopping in the area.

The interior features two separate bedrooms - one with a fitted walk-in closet, living room with a fully fitted open kitchen and pantry, bathroom with bathtub, walk-in shower and toilet, guest toilet, and a spacious entry hall.

Preserved original features, large windows, high ceilings, wooden floors, two original ceramic stoves, security entry door, built-in wardrobes and storage, gas boiler, alarm, video entry phone, basement storage unit. There is a private courtyard available to the tenants. Parking available at the Intercontinental Hotel. Common building charges and water CZK 500/person/month. Gas and electricity will be transferred to the tenant.



\* Area of the unit according to the Civil Code. The area consists of the sum total area of the entire unit bounded by perimeter walls.