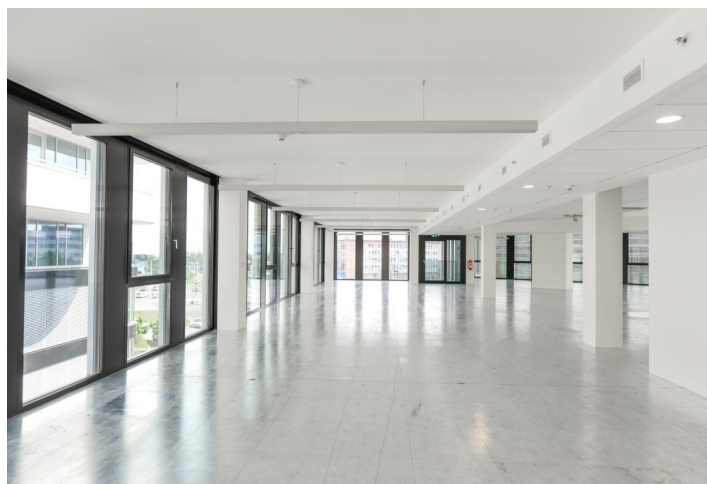
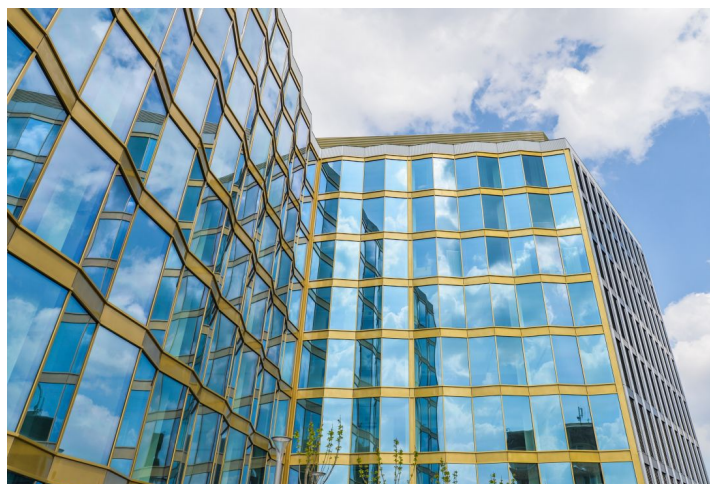




Office space

Prague 4, Nusle, Na Strži

Rented



**Office space****Rented**

Prague 4, Nusle, Na Strži

Service price	169 CZK monthly per m ²
Available area	983 m ²
Cellar	-
Parking	EUR 130 / pp / month
PENB	A
Reference number	26548

Office space for lease on the 1st floor of an administrative building situated in Prague 4. The exterior appearance of the L-shaped building is defined by a unique facade and the spacious main entrance is framed by its two wings. The complex received the LEED Platinum certificate.

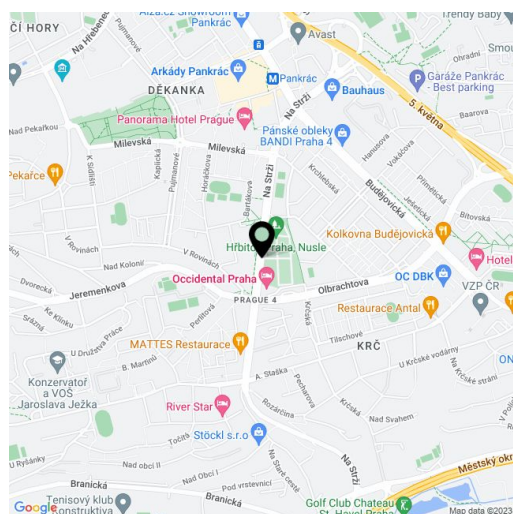
Location:

The building is situated in an attractive business location in Prague 4, in the vicinity of the Pankrác metro station (line C) and bus stops. Easy connection to the Prague Ring Road and the D1 highway. Good accessibility to the city center (approx. 7 minutes) and to the international Vaclav Havel Airport Prague (approx. 25 minutes). Excellent civic amenities in the area – many restaurants, bars, financial institutions, and the Arkády Pankrác shopping center.

Features and services:

- Central reception
- 24/7 security
- Magnetic card access, wheelchair accessible
- Air-conditioning
- Ceiling heating and cooling
- Openable windows
- Suspended ceilings
- Raised floors
- Sprinklers
- Showers
- Floor boxes
- Green atrium
- Parking in the underground garages

Rental and service charges listed without VAT. Lessee pays no commission.





Office space

Prague 4, Nusle, Na Strži

Rented



1. patro / 1st floor