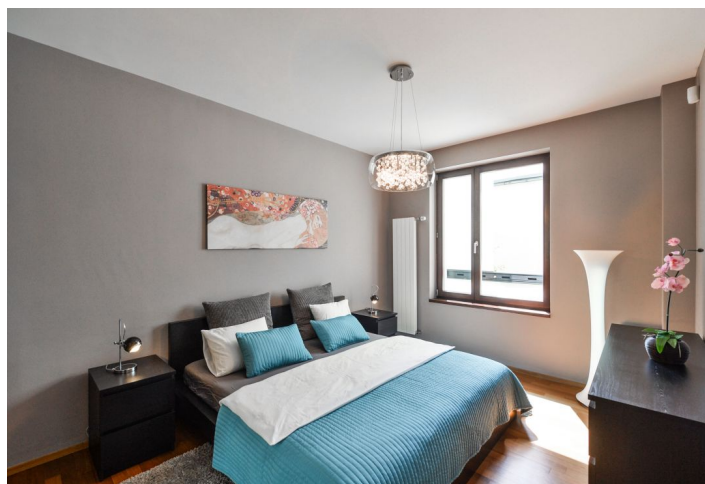




## Apartment One-bedroom (2+kk)

Rented

86 m<sup>2</sup>, Prague 8, Karlín, Šaldova





## Apartment One-bedroom (2+kk)

Rented

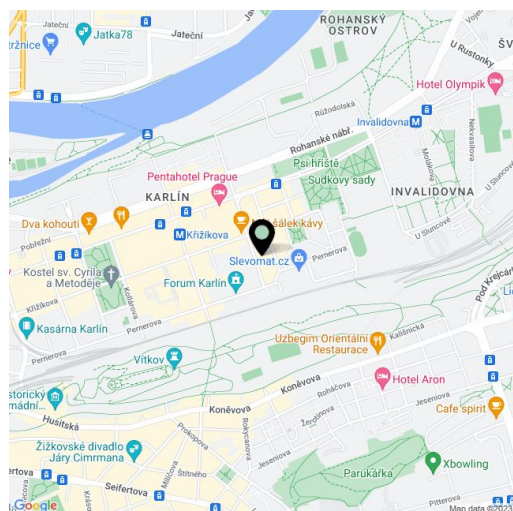
86 m<sup>2</sup>, Prague 8, Karlín, Šaldova

Total area	100 m <sup>2</sup>
Floor area*	86 m <sup>2</sup>
Loggia	14 m <sup>2</sup>
Parking	Garage parking.
Garage	Yes
Cellar	Yes
Service price	Deposit for common building charges, energies, and Internet CZK 7,850/month.
PENB	C
Reference number	26601
Available from	Immediately

**Modern fully furnished apartment with a 14 m<sup>2</sup> enclosed balcony situated on the 2nd floor of a completely reconstructed industrial building converted into a new development - Cornlofts Šaldova. Located on a quiet street in a rapidly developing Prague 8 area with full amenities within easy reach and quick connections to the city center, just three minutes from a tram stop and the Křižíkova metro station. Building amenities include an elevator, a shared green landscaped courtyard, and underground parking.**

The interior features a comfortable living room with a fully fitted open plan kitchen, a dining area, and access to the large enclosed balcony facing the landscaped courtyard garden, one bedroom with built-in wardrobes, a bathroom with a bathtub, a separate toilet, and an open entrance hall with built-in wardrobes and storage.

Large windows, hardwood floors, security entry door, blackout blinds, washer with dryer, dishwasher, induction cooktop, microwave oven, TV, acellar, chip entry to the building and garage. One garage parking space with a wallbox included in the rent.



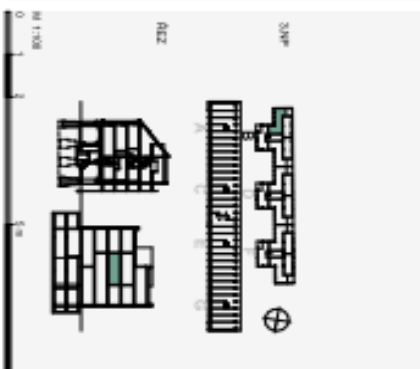
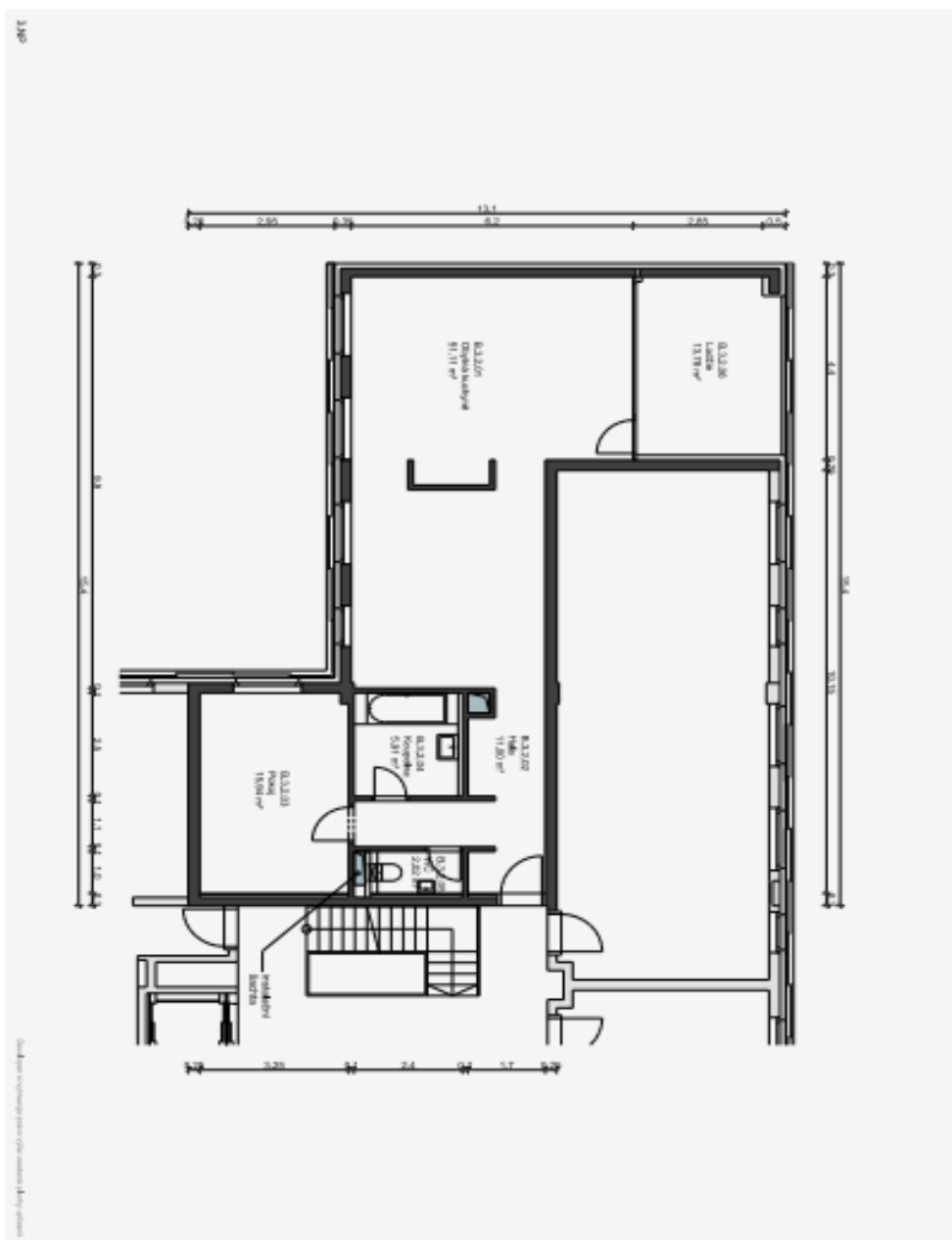
\* Area of the unit according to the Civil Code. The area consists of the sum total area of the entire unit bounded by perimeter walls.



# Apartment One-bedroom (2+kk)

86 m<sup>2</sup>, Prague 8, Karlín, Šaldova

Rented



Číslo	název	m <sup>2</sup>	
3NP	B.3.3.01	OSTRAVA KUCHYNE	11,11
3NP	B.3.3.02	LOUČKA	11,00
3NP	B.3.3.03	STŘEDNÍ	11,00
3NP	B.3.3.04	KUCHYNE/LOUČKA	11,01
3NP	B.3.3.05	WC	8,20
3NP	B.3.3.06	LOUČKA	11,00
3NP	B.3.3.07	LOUČKA	11,11
CELKOVÁ PLOCHA PLOCHA CELKOVÁ		85,38	
PLOCHA LOUČEK CELKOVÁ		11,11	

**Byt B.3.2**  
2 + KK



# Apartment One-bedroom (2+kk)

Rented

86 m<sup>2</sup>, Prague 8, Karlín, Šaldova



číslo	název	m <sup>2</sup>
3NP	OBÝTNÁ KUCHYŇE	51,11
3NP	HALA	11,00
3NP	POKOJ	15,94
3NP	KOUPELNA	05,91
3NP	WC	02,02
3NP	CELKEM	85,98
3NP	LODŽIE	13,78
<b>ČISTÁ PODLAŽNÍ PLOCHA CELKEM</b>		<b>85,98</b>
<b>PLOCHA LODŽIE CELKEM</b>		<b>13,78</b>

