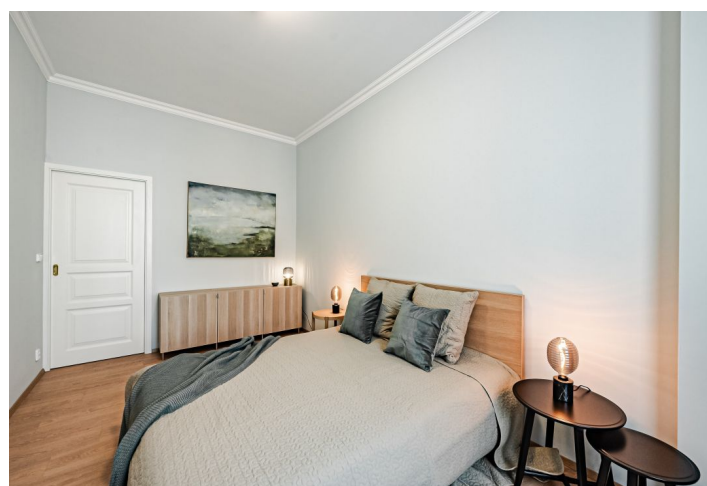
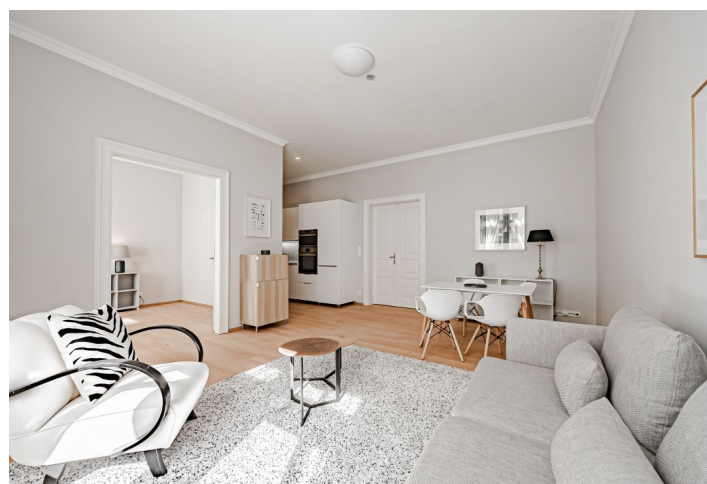
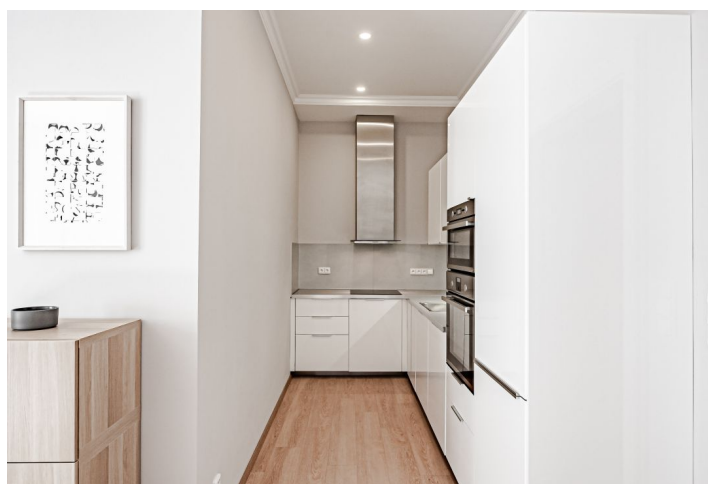
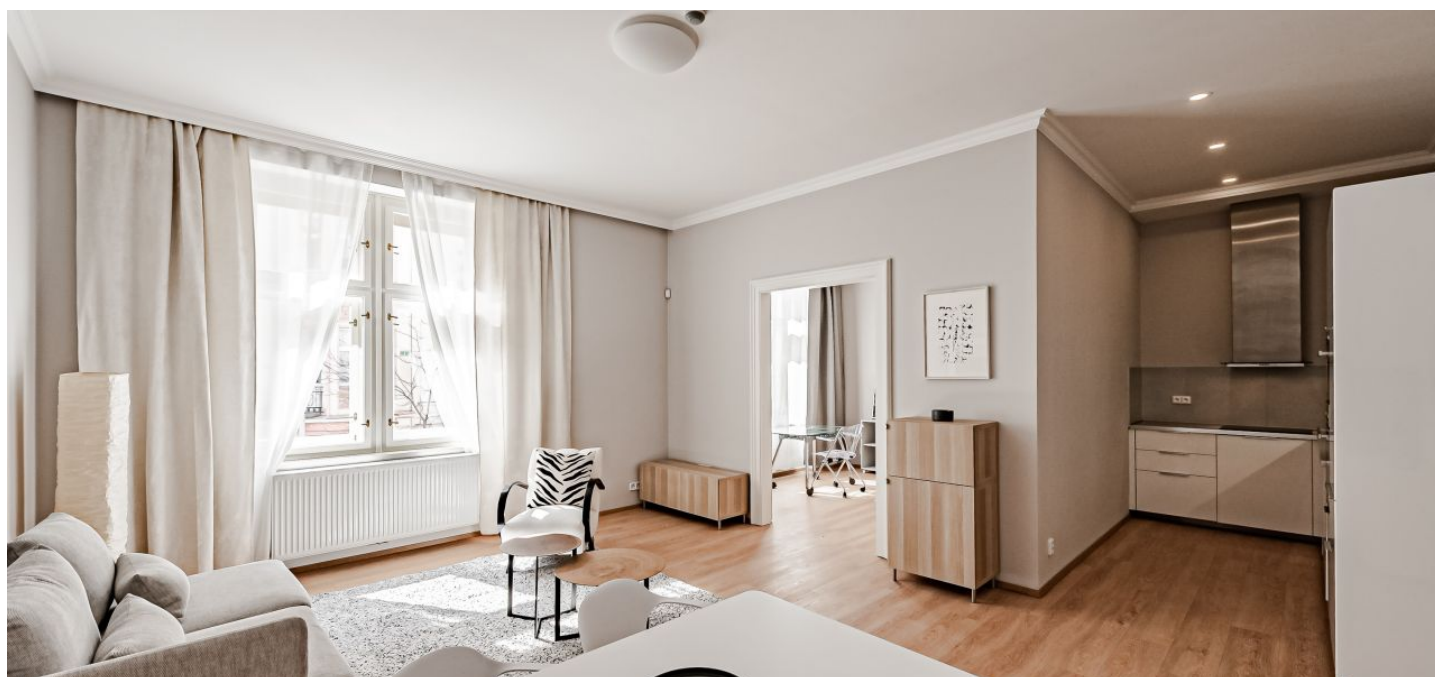




## Apartment Two-bedroom (3+kk)

Rented

76 m², Prague 8, Karlín, Březinova





# Apartment Two-bedroom (3+kk)

Rented

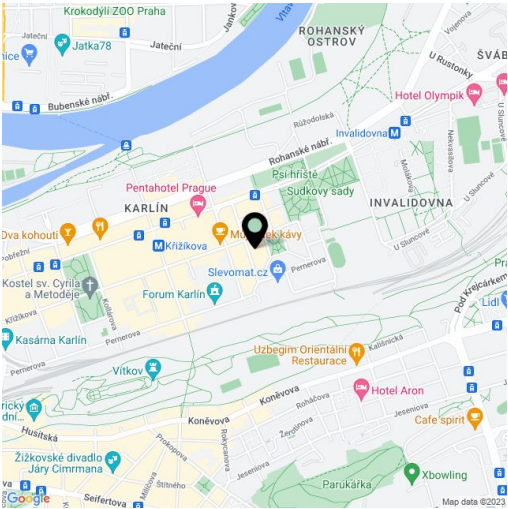
76 m², Prague 8, Karlín, Březinova

Total area	76 m²
Parking	-
Cellar	-
PENB	G
Reference number	26674
Available from	Immediately

Completely reconstructed furnished 2-bedroom flat on the first floor of a newly renovated building with lift and preserved original features. Well located in the rapidly developing district of Prague 8 - Karlín, 200 m from a tram stop and two blocks from Křižíkova metro station. Within walking distance of the Karlín business center, great amenities and a number of cafes, bistros and restaurants. The city center is accessible within a few minutes by tram or metro. You can also use the nearby bike path along the Vltava river.

The interior features a comfortable living room with a fully fitted open kitchen, one bedroom with a fitted walk-in closet, second bedroom, bathroom with bathtub and walk-in shower, a separate toilet, a fitted walk-in closet, and entrance hall.

High ceilings, large windows, good quality vinyl floors, roller blinds, central gas heating, heated tile floors in the bathroom, washer / dryer, dishwasher, induction cooktop, fan oven, microwave oven, video entry phone, alarm. Common building charges CZK 800/person/month. Deposit for water and heating CZK 5000/month. Electricity is billed separately.



\* Area of the unit according to the Civil Code. The area consists of the sum total area of the entire unit bounded by perimeter walls.