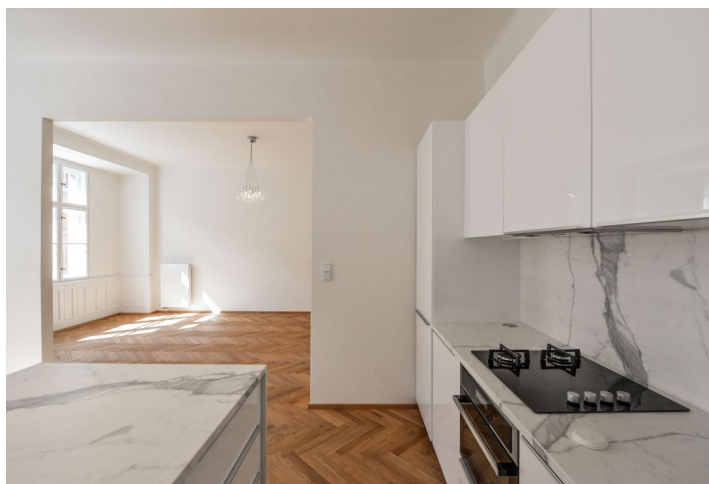




## Apartment One-bedroom (2+kk)

Rented

85 m<sup>2</sup>, Praha 2, Nové Město, Podskalská





## Apartment One-bedroom (2+kk)

Rented

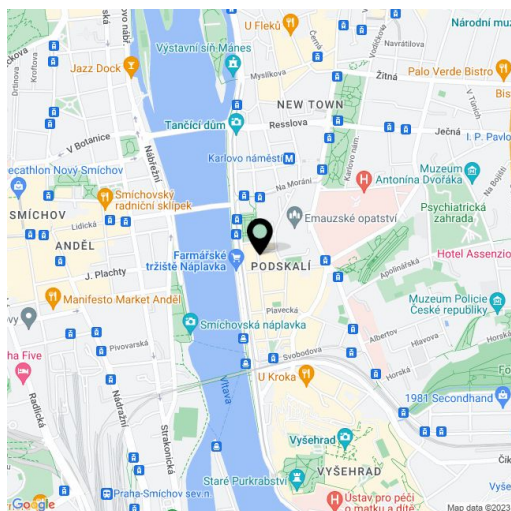
85 m<sup>2</sup>, Praha 2, Nové Město, Podskalská

Total area	85 m <sup>2</sup>
Parking	-
Cellar	Yes
PENB	G
Reference number	26731
Available from	Immediately

Brand new completely refurbished 1-bedroom flat on the fourth floor of a renovated traditional building with lift and preserved original details. Centrally located in a quiet residential neighborhood just a minute walk from the Vltava riverbank and two minutes from Palackého / Karlovo náměstí metro station and tram links. A few min. by metro to the city center, full amenities within easy reach.

The interior features a sunny living room with a fully fitted open kitchen and dining area, one bedroom facing the quiet courtyard, bathroom (walk-in shower, bath, double sink, toilet with bidet shower), walk-in closet / utility room, and a spacious entrance hall.

High ceilings, large windows, new solid wood parquet floors, high quality security entry door, gas boiler, cellar, chip entry to the building. The flat can be furnished with basic furniture at a higher rent. Deposit for common building charges, water and heating CZK 2500 per month. Electricity is billed separately.



\* Area of the unit according to the Civil Code. The area consists of the sum total area of the entire unit bounded by perimeter walls.