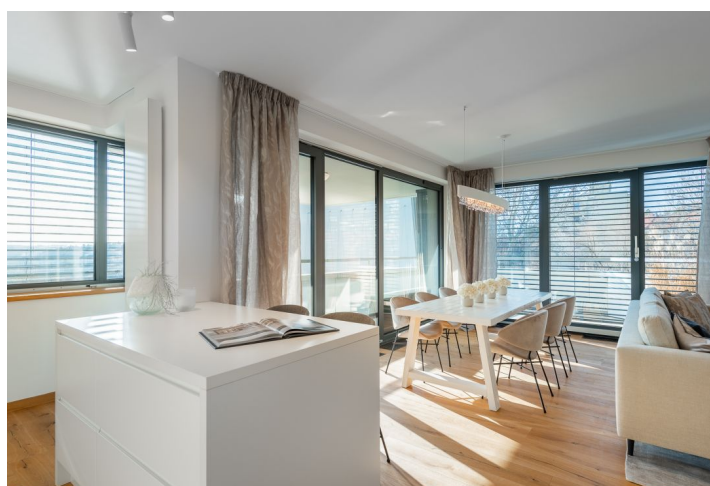




Apartment Three-bedroom (4+kk)

Ask for price

197 m², Prague 5, Smíchov, Na Hřebenkách





Apartment Three-bedroom (4+kk)

[Ask for price](#)197 m², Prague 5, Smíchov, Na Hřebenkách

Total area	224 m ²
Floor area*	197 m ²
Balcony	27 m ²
Parking	3 garage parking spaces
Garage	Yes
Cellar	Yes
PENB	B
Reference number	26741

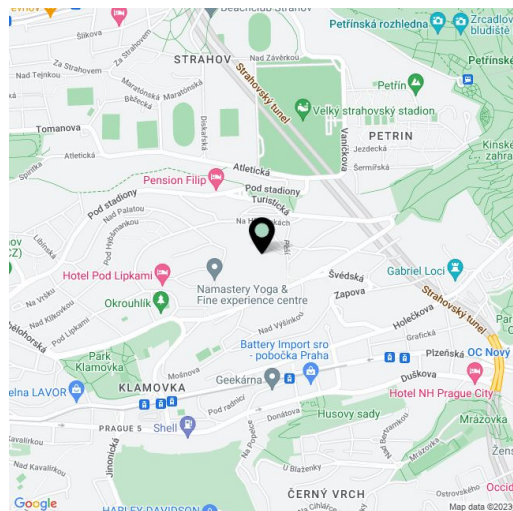
Modern 3-bedroom penthouse with 2 balconies situated on the entire 6th floor of a new residential building. The house was designed by the Italian architect Porcellini to a very high standard and is ideally located on a mild, sunny slope, ensuring comfortable living with pleasant views of the surrounding greenery.

The apartment will be offered in a state of **shell&core** – i.e. without final surfaces and fixtures such as floors, tiles, bathrooms, kitchen or lighting. The elegant common areas of the house include a reception desk, as well as a storeroom for bikes and baby strollers.

The purchase price includes **3 garage parking spaces**.

The Hřebenky area is one of the most **sought-after residential locations** in Prague due to its tranquility, which is due to the area's minimal traffic. It is also within easy reach of the center of Prague, with a full spectrum of services. Also worth mentioning is its fast access to several **prestigious international schools** in Prague 6, or wide range of leisure time activities in the nearby **Ladronka and Petřín** parks. The location also has easy access to the Vaclav Havel Airport Prague, and the cities of Pilsen and Karlovy Vary.

Interior 197.40 m², balcony 26.91 m².,



* Area of the unit according to the Civil Code. The area consists of the sum total area of the entire unit bounded by perimeter walls.



Apartment Three-bedroom (4+kk)

Ask for price

197 m², Prague 5, Smíchov, Na Hřebenkách

